

SERIE

A

2024_LINE_1



Cilindri compatti Unitop
Unitop Compact Cylinders

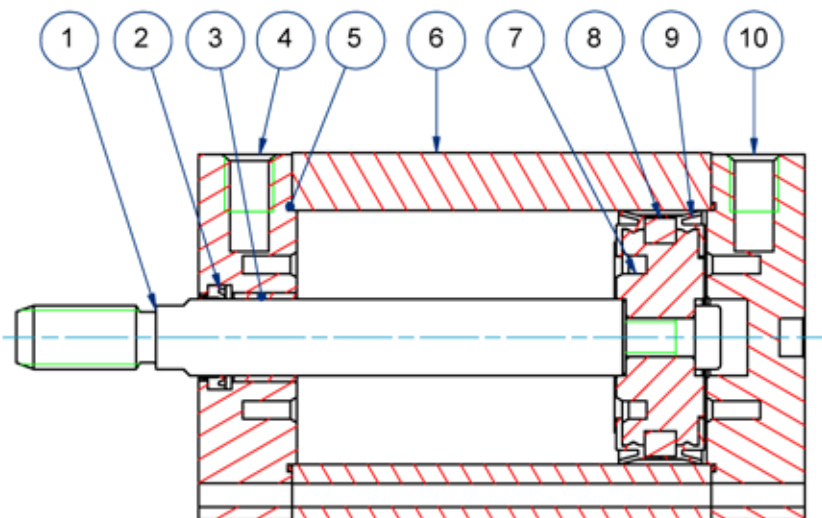


CARATTERISTICHE TECNICHE - TECHNICAL CHARACTERISTICS

Pressione di esercizio <i>Working pressure</i>	1 ÷ 10 bar (doppio effetto - <i>double acting</i>) 2 ÷ 10 bar (semplice effetto - <i>single acting</i>)
Temperatura di esercizio <i>Working temperature</i>	0 ÷ +80°C (-20°C con aria secca - <i>with dry air</i>) 0 ÷ +150°C (con guarnizioni per alte temperature - <i>with high temperature seals</i>)
Versioni - Versions	semplice effetto - doppio effetto - antirotazione - stelo passante <i>single acting - double acting - anti-rotation - double rod</i>
Alesaggi - Bores	∅ 12 - 16 - 20 - 25 - 32 - 40 - 50 - 63 - 80 - 100
Corse - Strokes	vedere tabelle corse standard - <i>see standard stroke tables</i>
Fluido - Fluid	aria compressa filtrata, non lubrificata - <i>compressed filtered, non lubricated air</i>

CARATTERISTICHE COSTRUTTIVE - CONSTRUCTIVE CHARACTERISTICS

①	Stelo - Rod	acciaio inox AISI 303 - <i>stainless steel AISI 303</i>
② ⑨	Guarnizioni - Seals	poliuretano - <i>polyurethane</i>
③	Boccola - Bush	acciaio+PTFE - <i>steel+PTFE</i>
④ ⑩	Testate - Covers	alluminio anodizzato - <i>anodized aluminium</i>
⑤	O-ring	NBR
⑥	Tubo - Tube	alluminio anodizzato - <i>anodized aluminium</i>
⑦	Pistone - Piston	alluminio - <i>aluminium</i>
⑧	Magnete - Magnet	∅ 12 ÷ 32 neodimio - <i>neodymium alloy</i> ∅ 40 ÷ 100 plastoferrite - <i>rubber magnet</i>
	Viti - Screws	acciaio zincato - <i>zinc coated steel</i>
	Molla - Spring	acciaio - <i>steel</i>
	Paracolpo - Bumper	poliuretano - <i>polyurethane</i>



CHIAVE DI CODIFICA

KEY CODE

A D M		0 5 0 . 0 3 0 . G S . F					OPZIONE - OPTION	
		ALESAGGIO - BORE (Ø)		CORSA - STROKE (mm)			EX ATEX II 2GD c T4	
		012-016-020-025-032 040-050-063-080-100		vedere tabelle corse std see std stroke tables				
		VERSIONE - VERSION					STELO - ROD	
		A con staffa antirotazione with anti-rotation bracket					F femmina female	
		VERSIONE - VERSION					M maschio male	
		P stelo passante double rod						
		VERSIONE - VERSION					GUARNIZIONI - SEALS	
		M magnetico magnetic					GS guarnizioni standard standard seals	
		non magnetico non-magnetic					VR guarnizione stelo per alte temperature high temperature rod seal	
		VERSIONE - VERSION					VA tutte le guarnizioni per alte temperature all seals for high temperature	
		S semplice effetto molla anteriore single acting front spring						
		SE semplice effetto molla posteriore single acting rear spring						
		D doppio effetto double acting						
		SERIE - SERIES						
		A tubo profilato con cave per sensori tube with slots for sensors						

SERIE

A

ESECUZIONI A RICHIESTA - ON REQUEST

 Stelo forato - *Hollow rod*

 Stelo prolungato (W) - *Extended rod (W)*

 Filetti speciali (dado stelo non fornito) - *Special thread (without rod nut)*

ATEX II 2GD c T4

FORZE TEORICHE DI TRAZIONE (P=6bar)

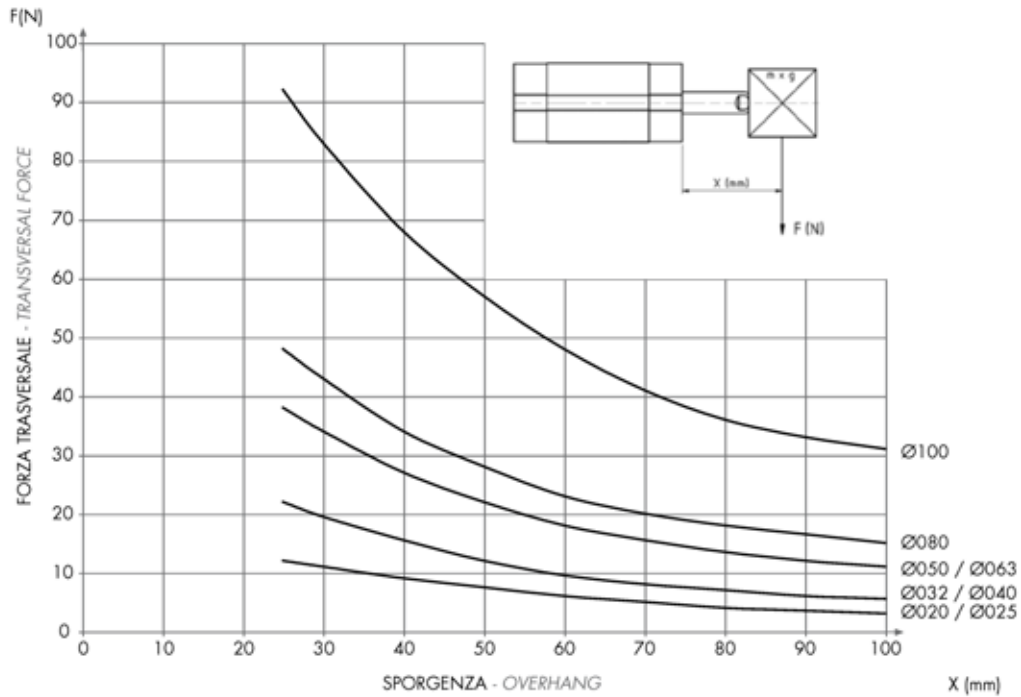
THEORETICAL FORCES OF TRACTION (P=6bar)

		Ø	012-016	020	025	032	040	050	063	080	100
ADM	SPINTA THRUST	[N]	121	189	295	483	753	1.178	1.870	3.016	4.712
	TRAZIONE TRACTION	[N]	90	141	247	415	686	1.057	1.750	2.827	4.524
ADMA	SPINTA THRUST	[N]	121	189	295	483	753	1.178	1.870	3.016	4.712
	TRAZIONE TRACTION	[N]	90	141	247	415	686	1.057	1.750	2.827	4.524
ADMP	SPINTA THRUST	[N]	90	141	247	415	686	1.057	1.750	2.827	4.524
	TRAZIONE TRACTION	[N]	90	141	247	415	686	1.057	1.750	2.827	4.524
ADMPA	SPINTA THRUST	[N]	90	141	247	415	686	1.057	1.750	2.827	4.524
	TRAZIONE TRACTION	[N]	90	141	247	415	686	1.057	1.750	2.827	4.524

DIAGRAMMA TEORICO CARICO AMMISSIBILE

THEORETICAL ALLOWABLE LOAD

SERIE

A

DIAGRAMMA TEORICO CARICO AMMISSIBILE

THEORETICAL ALLOWABLE LOAD

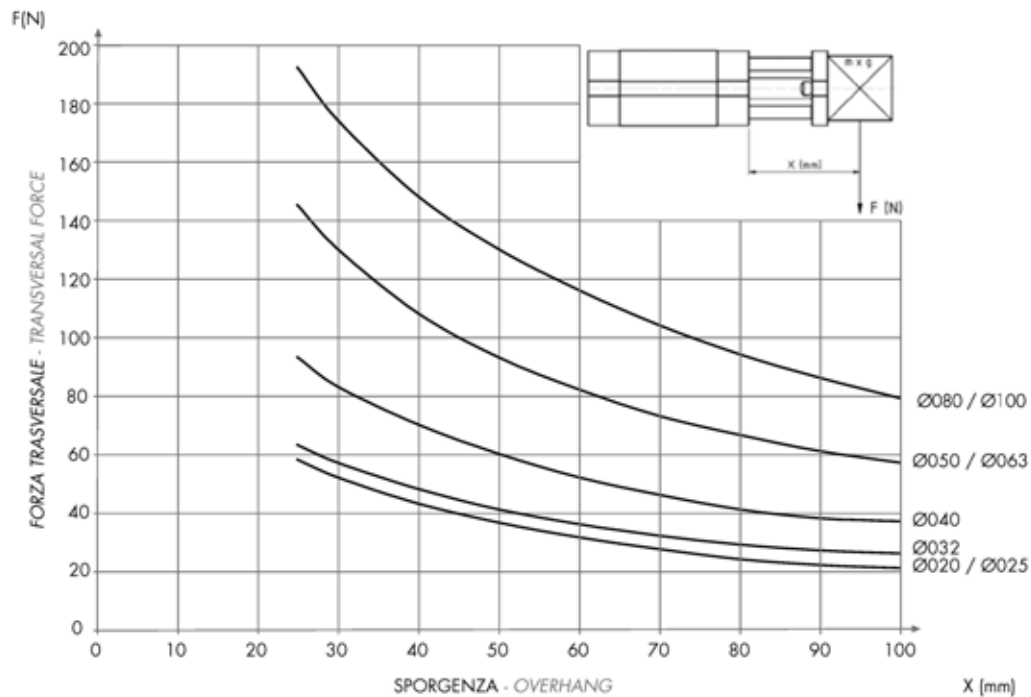
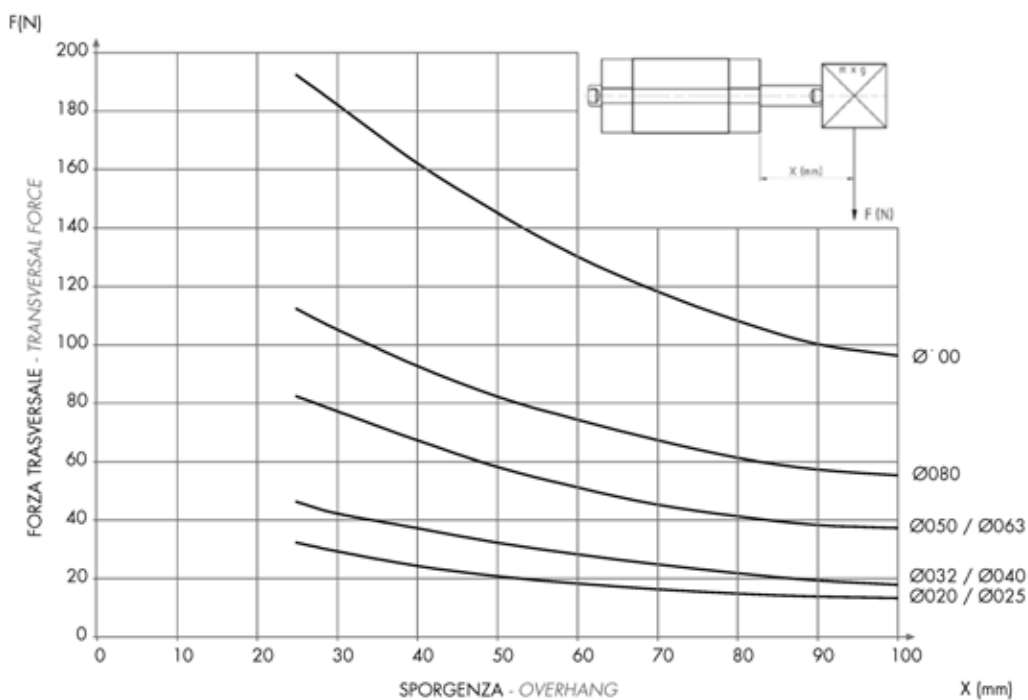
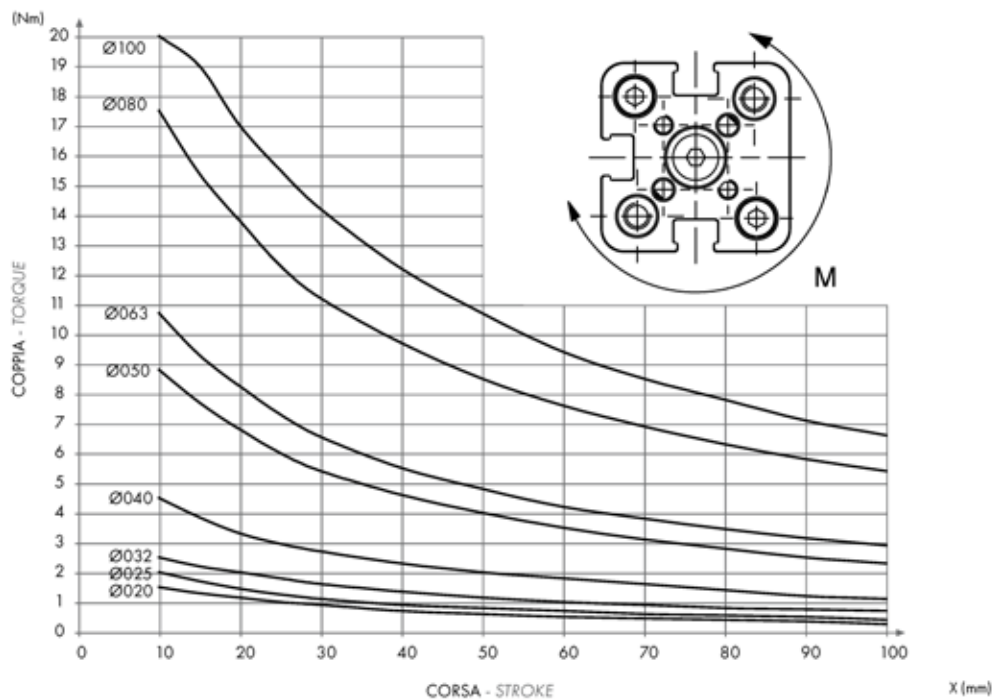


DIAGRAMMA TEORICO CARICO AMMISSIBILE

THEORETICAL ALLOWABLE LOAD

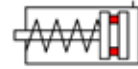

 SERIE
A
DIAGRAMMA TEORICO COPPIA AMMISSIBILE

THEORETICAL ALLOWABLE TORQUE

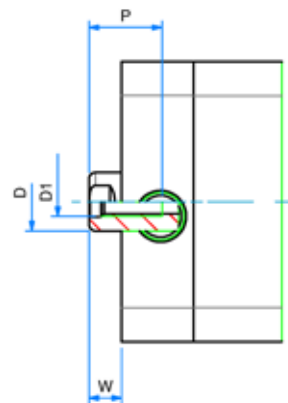
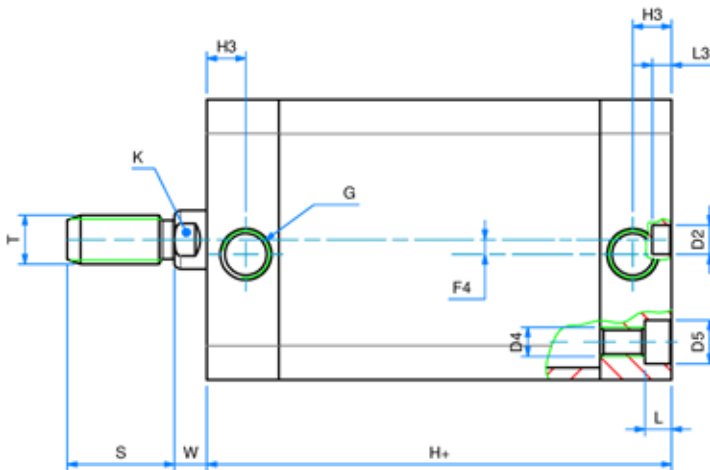
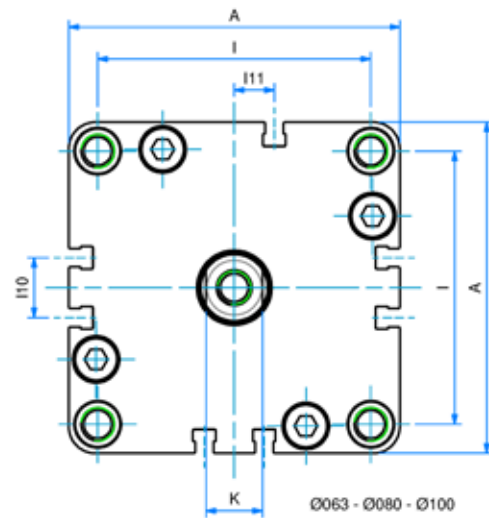
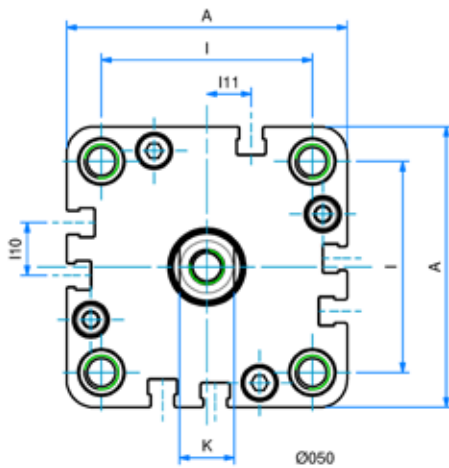
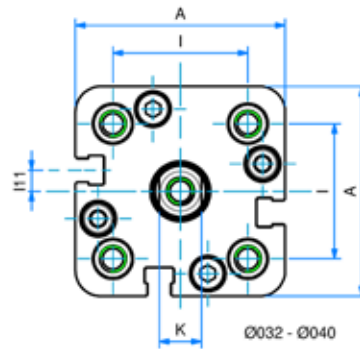
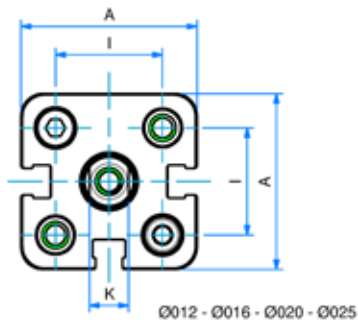


SEMPLICE EFFETTO MAGNETICO - MOLLA ANTERIORE

SINGLE ACTING MAGNETIC - FRONT SPRING



SERIE

A


SEMPLICE EFFETTO MAGNETICO - MOLLA ANTERIORE
SINGLE ACTING MAGNETIC - FRONT SPRING

DIMENSIONI - DIMENSIONS										
Ø	012	016	020	025	032	040	050	063	080	100
A	29	29	36	40	50	58	67	80	100	124
ØD	6	8	10	10	12	12	16	16	20	25
D1	M3	M4	M5	M5	M6	M6	M8	M8	M10	M12
ØD2	6	6	6	6	6	6	6	8	8	8
D4	M4	M4	M5	M5	M6	M6	M8	M10	M10	M10
ØD5	6	6	7,5	7,5	9	9	10,5	13,5	13,5	13,5
F4	-	-	-	-	4	3	-	-	-	-
G	M5	M5	M5	M5	G1/8	G1/8	G1/8	G1/8	G1/8	G1/4
H+	38*	38*	38*	39,5*	44,5*	45,5*	45,5*	50*	56*	66,5*
H3	8	8	8	8	8	8	8	8	8,5	10,5
I	18	18	22	26	32	42	50	62	82	103
I10	-	-	-	-	-	-	12,5	14	18	35
I11	-	-	-	-	5	3	10,5	12	12	17,5
K	5	6	8	8	10	10	13	13	17	22
L	3,5	3,5	4,5	4,5	5,5	5,5	6,5	8,5	8,5	8,5
L3	4	4	4	4	4	4	4	4	4	4
P	8	11	12	12	15	15	17	17	17	22
S	16	20	22	22	22	22	24	24	32	40
T	M6	M8	M10x1,25	M10x1,25	M10x1,25	M10x1,25	M12x1,25	M12x1,25	M16x1,5	M20x1,5
W	4,5	4,5	4,5	5,5	6	6,5	7,5	7,5	8	10

+ = aggiungere lunghezza corsa (mm) - add stroke length (mm)

* per corse - for strokes: 035 - 040 - 050 - 060:

ASM 012 - 016 - 020 aggiungere - add +10 mm

ASM 025 - 032 - 040 - 050 - 063 aggiungere - add +20 mm

ASM 080 - 100 aggiungere - add +30 mm

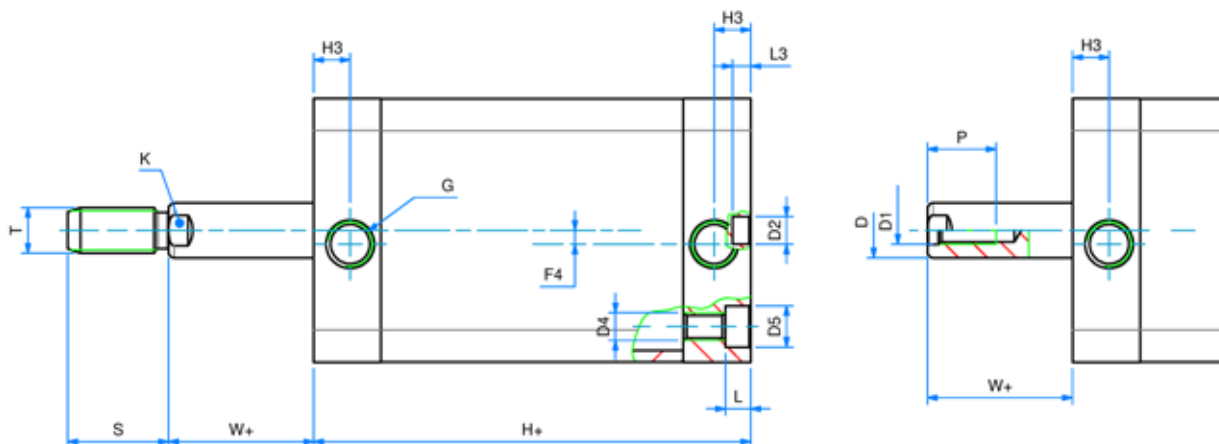
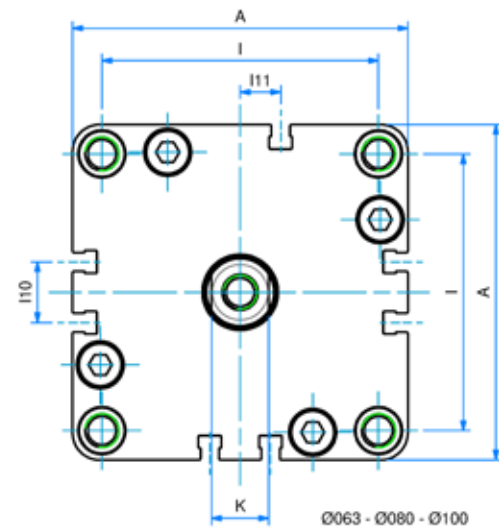
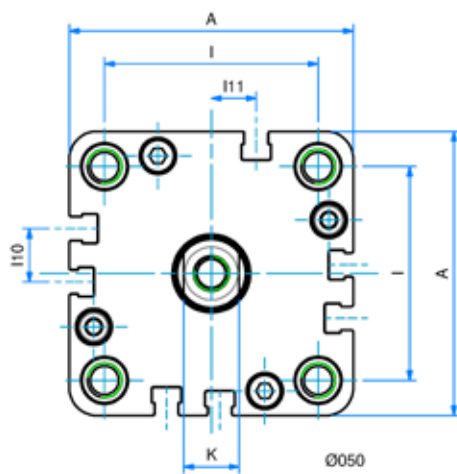
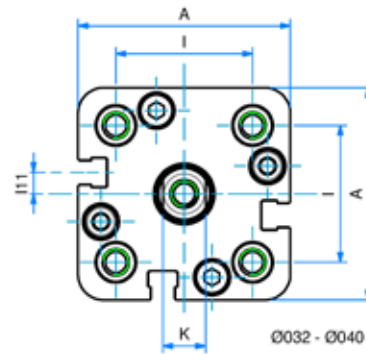
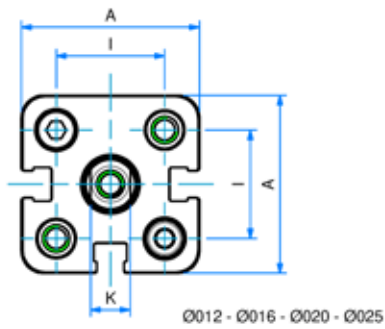
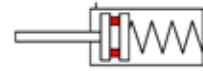
Ø	CORSE STANDARD - STANDARD STROKES
012	5 - 10 - 15 - 20 - 25 - 30 - 35 - 40 - 50 - 60
016	5 - 10 - 15 - 20 - 25 - 30 - 35 - 40 - 50 - 60
020	5 - 10 - 15 - 20 - 25 - 30 - 35 - 40 - 50 - 60
025	5 - 10 - 15 - 20 - 25 - 30 - 35 - 40 - 50 - 60
032	5 - 10 - 15 - 20 - 25 - 30 - 35 - 40 - 50 - 60
040	5 - 10 - 15 - 20 - 25 - 30 - 35 - 40 - 50 - 60
050	5 - 10 - 15 - 20 - 25 - 30 - 35 - 40 - 50 - 60
063	5 - 10 - 15 - 20 - 25 - 30 - 35 - 40 - 50 - 60
080	5 - 10 - 15 - 20 - 25 - 30 - 35 - 40 - 50 - 60
100	5 - 10 - 15 - 20 - 25 - 30 - 35 - 40 - 50 - 60

SERIE
A

SEMPLICE EFFETTO MAGNETICO - MOLLA POSTERIORE

SINGLE ACTING MAGNETIC - REAR SPRING

SERIE
A



SEMPLICE EFFETTO MAGNETICO - MOLLA POSTERIORE
SINGLE ACTING MAGNETIC - REAR SPRING
DIMENSIONI - DIMENSIONS

Ø	012	016	020	025	032	040	050	063	080	100
A	29	29	36	40	50	58	67	80	100	124
Ø D	6	8	10	10	12	12	16	16	20	25
D1	M3	M4	M5	M5	M6	M6	M8	M8	M10	M12
Ø D2	6	6	6	6	6	6	6	8	8	8
D4	M4	M4	M5	M5	M6	M6	M8	M10	M10	M10
Ø D5	6	6	7,5	7,5	9	9	10,5	13,5	13,5	13,5
F4	-	-	-	-	4	3	-	-	-	-
G	M5	M5	M5	M5	G1/8	G1/8	G1/8	G1/8	G1/8	G1/4
H+	38*	38*	38*	39,5*	44,5*	45,5*	45,5*	50*	56*	66,5*
H3	8	8	8	8	8	8	8	8	8,5	10,5
I	18	18	22	26	32	42	50	62	82	103
I10	-	-	-	-	-	-	12,5	14	18	35
I11	-	-	-	-	5	3	10,5	12	12	17,5
K	5	6	8	8	10	10	13	13	17	22
L	3,5	3,5	4,5	4,5	5,5	5,5	6,5	8,5	8,5	8,5
L3	4	4	4	4	4	4	4	4	4	4
P	8	11	12	12	15	15	17	17	17	22
S	16	20	22	22	22	22	24	24	32	40
T	M6	M8	M10x1,25	M10x1,25	M10x1,25	M10x1,25	M12x1,25	M12x1,25	M16x1,5	M20x1,5
W+	4,5	4,5	4,5	5,5	6	6,5	7,5	7,5	8	10

+ = aggiungere lunghezza corsa (mm) - add stroke length (mm)

* per corse - for strokes 035-040-050-060:

ASEM 012 - 016 - 020 - 025 - 032 - 040 - 050 - 063 aggiungere - add +10 mm

ASEM 080 - 100 aggiungere - add +20 mm

Ø CORSE STANDARD - STANDARD STROKES

012 5 - 10 - 15 - 20 - 25 - 30 - 35 - 40 - 50 - 60

016 5 - 10 - 15 - 20 - 25 - 30 - 35 - 40 - 50 - 60

020 5 - 10 - 15 - 20 - 25 - 30 - 35 - 40 - 50 - 60

025 5 - 10 - 15 - 20 - 25 - 30 - 35 - 40 - 50 - 60

032 5 - 10 - 15 - 20 - 25 - 30 - 35 - 40 - 50 - 60

040 5 - 10 - 15 - 20 - 25 - 30 - 35 - 40 - 50 - 60

050 5 - 10 - 15 - 20 - 25 - 30 - 35 - 40 - 50 - 60

063 5 - 10 - 15 - 20 - 25 - 30 - 35 - 40 - 50 - 60

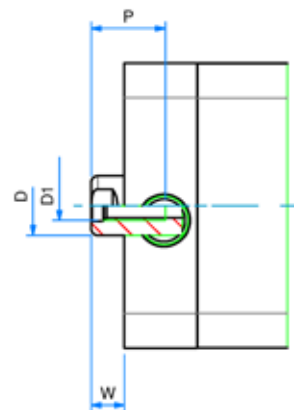
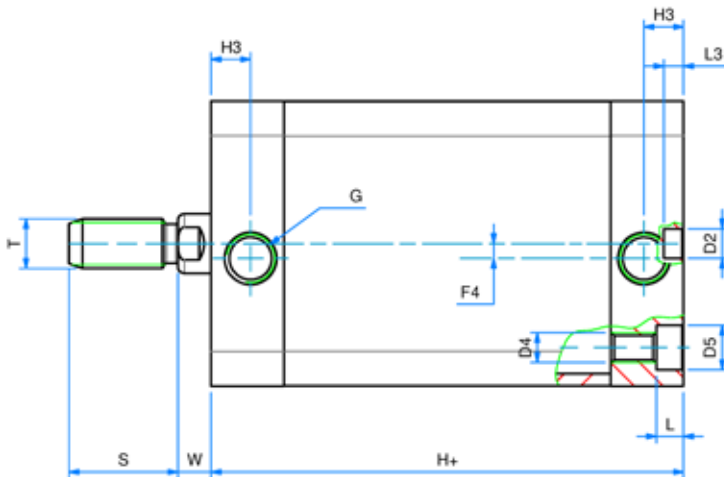
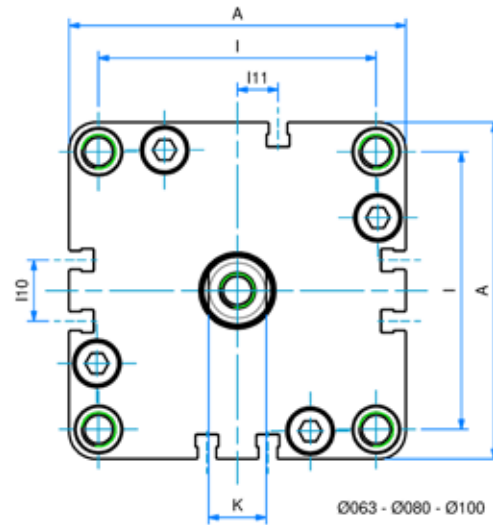
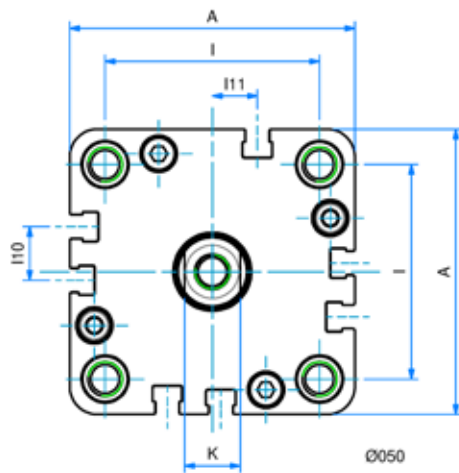
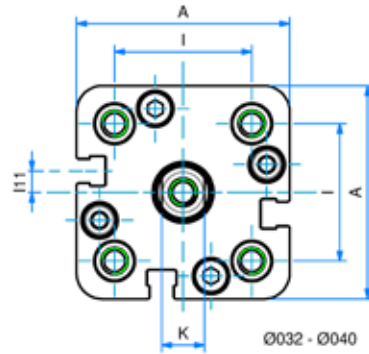
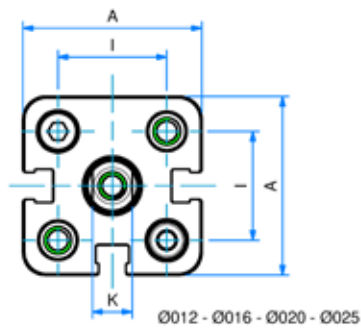
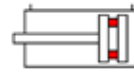
080 5 - 10 - 15 - 20 - 25 - 30 - 35 - 40 - 50 - 60

100 5 - 10 - 15 - 20 - 25 - 30 - 35 - 40 - 50 - 60

DOPPIO EFFETTO MAGNETICO

DOUBLE ACTING MAGNETIC

SERIE

A


DOPPIO EFFETTO MAGNETICO
DOUBLE ACTING MAGNETIC
DIMENSIONI - DIMENSIONS

#	012	016	020	025	032	040	050	063	080	100
A	29	29	36	40	50	58	67	80	100	124
Ø D	6	8	10	10	12	12	16	16	20	25
D1	M3	M4	M5	M5	M6	M6	M8	M8	M10	M12
Ø D2	6	6	6	6	6	6	6	8	8	8
D4	M4	M4	M5	M5	M6	M6	M8	M10	M10	M10
Ø D5	6	6	7,5	7,5	9	9	10,5	13,5	13,5	13,5
F4	-	-	-	-	4	3	-	-	-	-
G	M5	M5	M5	M5	G1/8	G1/8	G1/8	G1/8	G1/8	G1/4
H+	38	38	38	39,5	44,5	45,5	45,5	50	56	66,5
H3	8	8	8	8	8	8	8	8	8,5	10,5
I	18	18	22	26	32	42	50	62	82	103
I10	-	-	-	-	-	-	12,5	14	18	35
I11	-	-	-	-	5	3	10,5	12	12	17,5
K	5	6	8	8	10	10	13	13	17	22
L	3,5	3,5	4,5	4,5	5,5	5,5	6,5	8,5	8,5	8,5
L3	4	4	4	4	4	4	4	4	4	4
P	8	11	12	12	15	15	17	17	17	22
S	16	20	22	22	22	22	24	24	32	40
T	M6	M8	M10x1,25	M10x1,25	M10x1,25	M10x1,25	M12x1,25	M12x1,25	M16x1,5	M20x1,5
W	4,5	4,5	4,5	5,5	6	6,5	7,5	7,5	8	10

+ = aggiungere lunghezza corsa (mm) - add stroke length (mm)

CORSE STANDARD - STANDARD STROKES

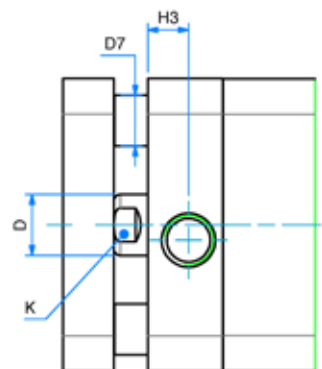
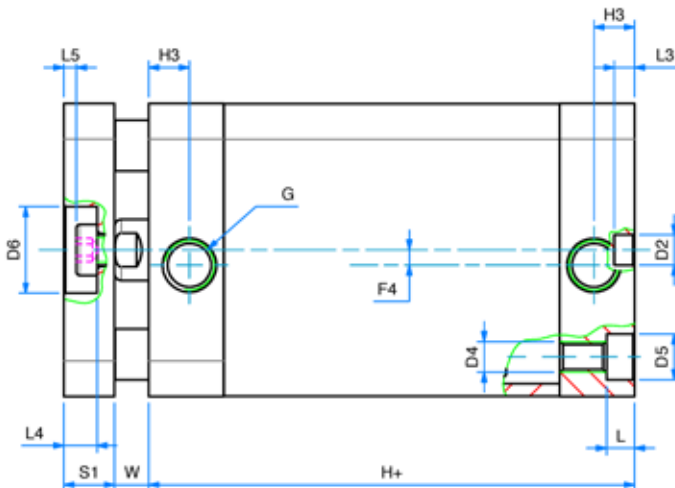
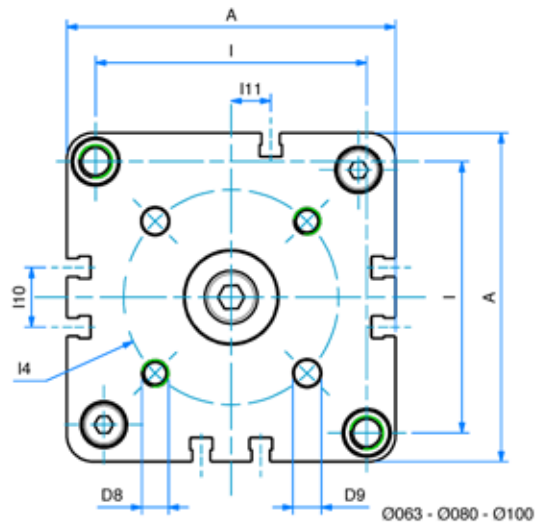
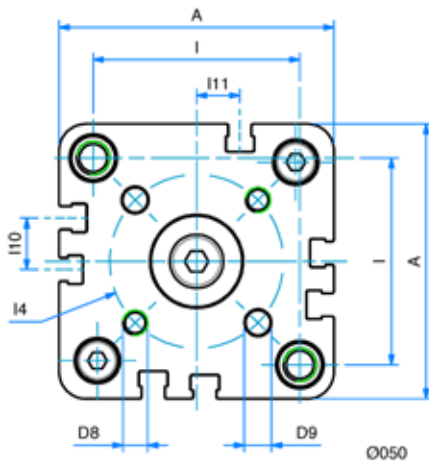
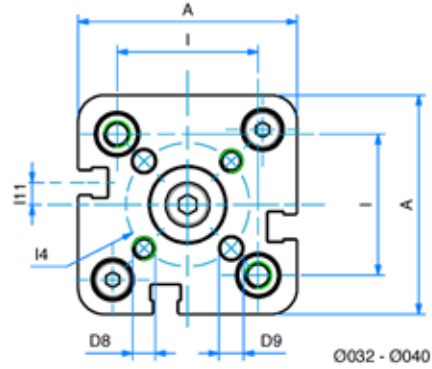
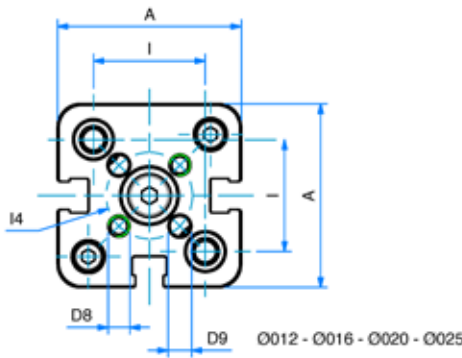
012	5 - 10 - 15 - 20 - 25 - 30 - 40 - 50 - 60 - 70 - 75 - 80 - 90 - 100 - 125 - 160 - 200 - 250
016	5 - 10 - 15 - 20 - 25 - 30 - 40 - 50 - 60 - 70 - 75 - 80 - 90 - 100 - 125 - 160 - 200 - 250
020	5 - 10 - 15 - 20 - 25 - 30 - 40 - 50 - 60 - 70 - 75 - 80 - 90 - 100 - 125 - 160 - 200 - 250
025	5 - 10 - 15 - 20 - 25 - 30 - 40 - 50 - 60 - 70 - 75 - 80 - 90 - 100 - 125 - 160 - 200 - 250
032	5 - 10 - 15 - 20 - 25 - 30 - 40 - 50 - 60 - 70 - 75 - 80 - 90 - 100 - 125 - 160 - 200 - 250 - 300 - 350 - 400
040	5 - 10 - 15 - 20 - 25 - 30 - 40 - 50 - 60 - 70 - 75 - 80 - 90 - 100 - 125 - 160 - 200 - 250 - 300 - 350 - 400
050	5 - 10 - 15 - 20 - 25 - 30 - 40 - 50 - 60 - 70 - 75 - 80 - 90 - 100 - 125 - 160 - 200 - 250 - 300 - 350 - 400
063	5 - 10 - 15 - 20 - 25 - 30 - 40 - 50 - 60 - 70 - 75 - 80 - 90 - 100 - 125 - 160 - 200 - 250 - 300 - 350 - 400
080	5 - 10 - 15 - 20 - 25 - 30 - 40 - 50 - 60 - 70 - 75 - 80 - 90 - 100 - 125 - 160 - 200 - 250 - 300 - 350 - 400
100	5 - 10 - 15 - 20 - 25 - 30 - 40 - 50 - 60 - 70 - 75 - 80 - 90 - 100 - 125 - 160 - 200 - 250 - 300 - 350 - 400

 SERIE
A

DOPPIO EFFETTO MAGNETICO ANTIROTAZIONE

DOUBLE ACTING MAGNETIC ANTI-ROTATION

SERIE
A



DOPPIO EFFETTO MAGNETICO ANTIROTAZIONE
DOUBLE ACTING MAGNETIC ANTI-ROTATION
DIMENSIONI - DIMENSIONS

ø	016	020	025	032	040	050	063	080	100
A	29	36	40	50	58	67	80	100	124
ø D	8	10	10	12	12	16	16	20	25
ø D2	6	6	6	6	6	6	8	8	8
D4	M4	M5	M5	M6	M6	M8	M10	M10	M10
ø D5	6	7,5	7,5	9	9	10,5	13,5	13,5	13,5
ø D6	9	11	14	17	17	22	22	28	30
ø D7	5	5	6	8	10	10	10	14	14
D8	M3	M4	M5	M5	M5	M6	M6	M8	M10
ø D9	3	4	5	5	5	6	6	8	10
F4	-	-	-	4	3	-	-	-	-
G	M5	M5	M5	G1/8	G1/8	G1/8	G1/8	G1/8	G1/4
H+	38	38	39,5	44,5	45,5	45,5	50	56	66,5
H3	8	8	8	8	8	8	8	8,5	10,5
I	18	22	26	32	42	50	62	82	103
I4	14	17	22	28	33	42	50	65	80
I10	-	-	-	-	-	12,5	14	18	35
I11	-	-	-	5	3	10,5	12	12	17,5
K	6	8	8	10	10	13	13	17	22
L	3,5	4,5	4,5	5,5	5,5	6,5	8,5	8,5	8,5
L3	4	4	4	4	4	4	4	4	4
L4	3,8	5	5	6,5	6,5	7,5	7,5	9	10
L5	1	1,5	1,5	2,5	2,5	2,5	2,5	3	3
S1	6	8	8	10	10	12	12	14	14
W	4,5	4,5	5,5	6	6,5	7,5	7,5	8	10

+ = aggiungere lunghezza corsa (mm) - add stroke length (mm)

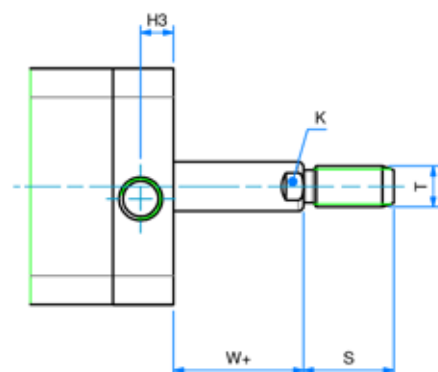
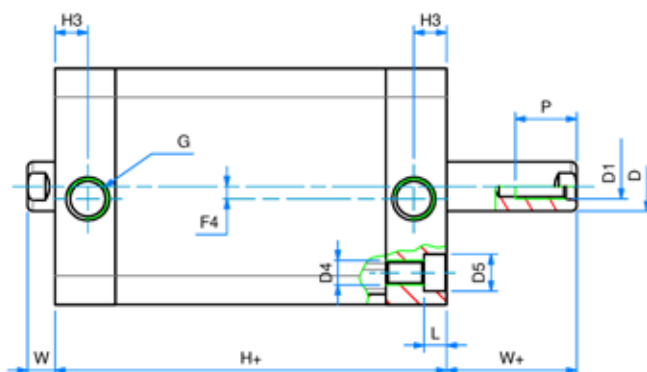
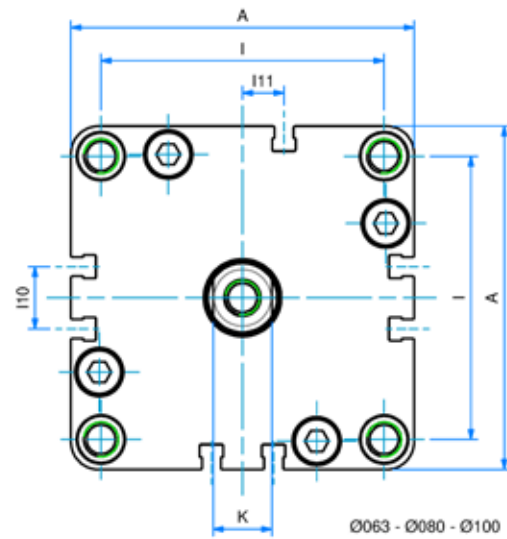
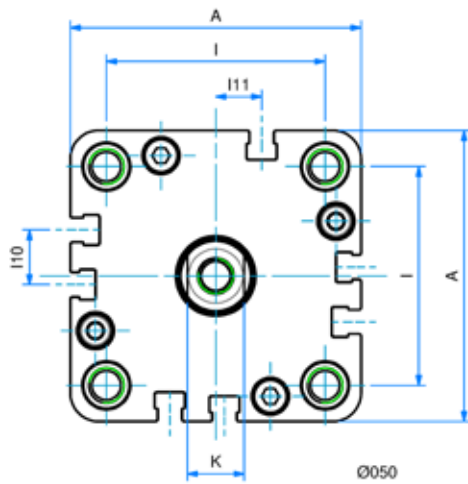
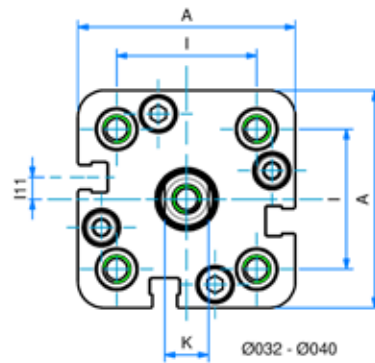
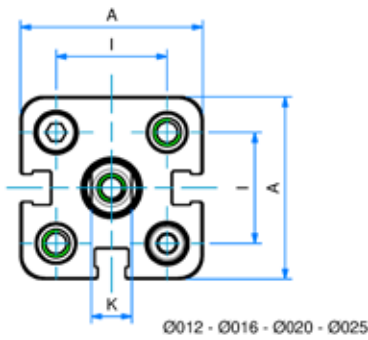
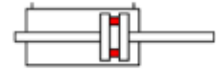
ø CORSE STANDARD - STANDARD STROKES

016	5 - 10 - 15 - 20 - 25 - 30 - 40 - 50 - 60 - 70 - 75 - 80 - 90 - 100 - 125 - 160 - 200
020	5 - 10 - 15 - 20 - 25 - 30 - 40 - 50 - 60 - 70 - 75 - 80 - 90 - 100 - 125 - 160 - 200
025	5 - 10 - 15 - 20 - 25 - 30 - 40 - 50 - 60 - 70 - 75 - 80 - 90 - 100 - 125 - 160 - 200
032	5 - 10 - 15 - 20 - 25 - 30 - 40 - 50 - 60 - 70 - 75 - 80 - 90 - 100 - 125 - 160 - 200 - 250 - 300 - 350 - 400
040	5 - 10 - 15 - 20 - 25 - 30 - 40 - 50 - 60 - 70 - 75 - 80 - 90 - 100 - 125 - 160 - 200 - 250 - 300 - 350 - 400
050	5 - 10 - 15 - 20 - 25 - 30 - 40 - 50 - 60 - 70 - 75 - 80 - 90 - 100 - 125 - 160 - 200 - 250 - 300 - 350 - 400
063	5 - 10 - 15 - 20 - 25 - 30 - 40 - 50 - 60 - 70 - 75 - 80 - 90 - 100 - 125 - 160 - 200 - 250 - 300 - 350 - 400
080	5 - 10 - 15 - 20 - 25 - 30 - 40 - 50 - 60 - 70 - 75 - 80 - 90 - 100 - 125 - 160 - 200 - 250 - 300 - 350 - 400
100	5 - 10 - 15 - 20 - 25 - 30 - 40 - 50 - 60 - 70 - 75 - 80 - 90 - 100 - 125 - 160 - 200 - 250 - 300 - 350 - 400

 SERIE
A

DOPPIO EFFETTO MAGNETICO STELO PASSANTE
DOUBLE ACTING MAGNETIC WITH DOUBLE ROD

SERIE
A



DOPPIO EFFETTO MAGNETICO STELO PASSANTE

DOUBLE ACTING MAGNETIC WITH DOUBLE ROD

DIMENSIONI - DIMENSIONS

Ø	012	016	020	025	032	040	050	063	080	100
A	29	29	36	40	50	58	67	80	100	124
ø D	6	8	10	10	12	12	16	16	20	25
D1	M3	M4	M5	M5	M6	M6	M8	M8	M10	M12
D4	M4	M4	M5	M5	M6	M6	M8	M10	M10	M10
ø D5	6	6	7,5	7,5	9	9	10,5	13,5	13,5	13,5
F4	-	-	-	-	4	3	-	-	-	-
G	M5	M5	M5	M5	G1/8	G1/8	G1/8	G1/8	G1/8	G1/4
H+	38	38	38	39,5	44,5	45,5	45,5	50	56	66,5
H3	8	8	8	8	8	8	8	8	8,5	10,5
I	18	18	22	26	32	42	50	62	82	103
I10	-	-	-	-	-	-	12,5	14	18	35
I11	-	-	-	-	5	3	10,5	12	12	17,5
K	5	6	8	8	10	10	13	13	17	22
L	3,5	3,5	4,5	4,5	5,5	5,5	6,5	8,5	8,5	8,5
P	8	11	12	12	15	15	17	17	17	22
S	16	20	22	22	22	22	24	24	32	40
T	M6	M8	M10x1,25	M10x1,25	M10x1,25	M10x1,25	M12x1,25	M12x1,25	M16x1,5	M20x1,5
W	4,5	4,5	4,5	5,5	6	6,5	7,5	7,5	8	10
W+	4,5	4,5	4,5	5,5	6	6,5	7,5	7,5	8	10

+ = aggiungere lunghezza corsa (mm) - add stroke length (mm)

Ø CORSE STANDARD - STANDARD STROKES

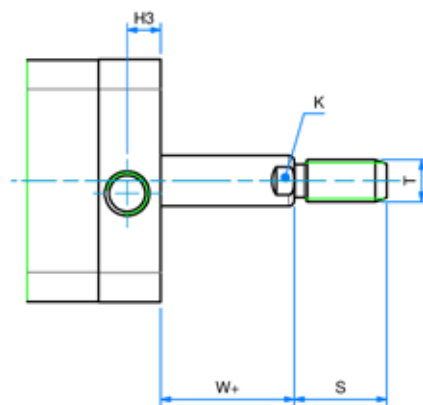
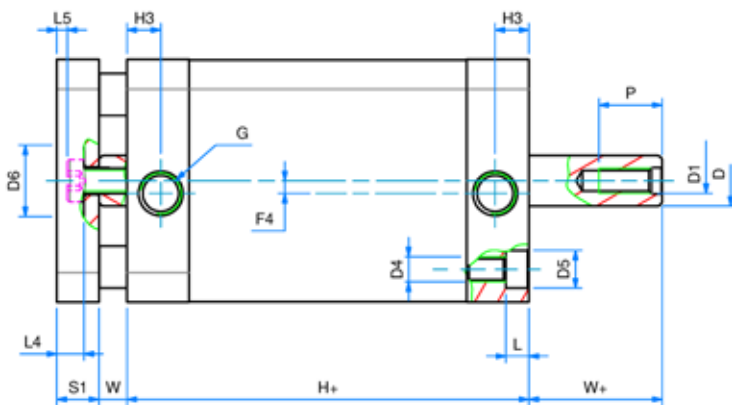
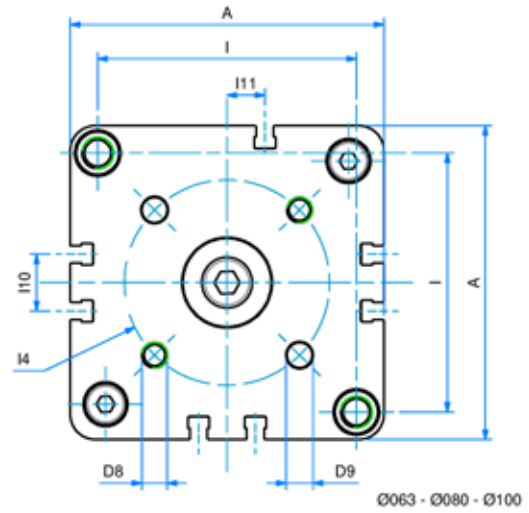
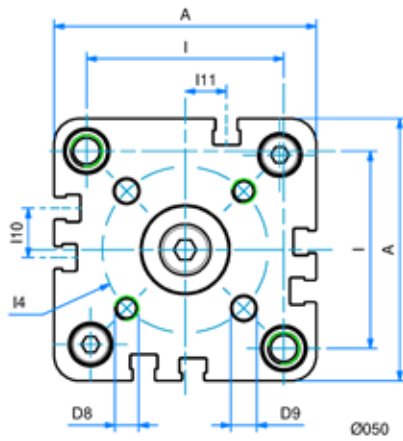
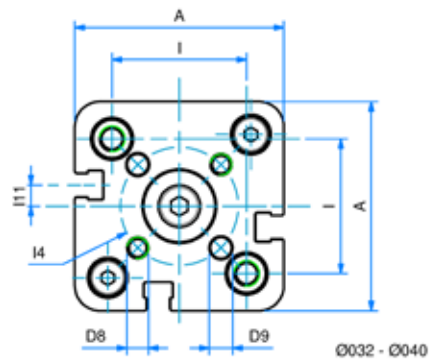
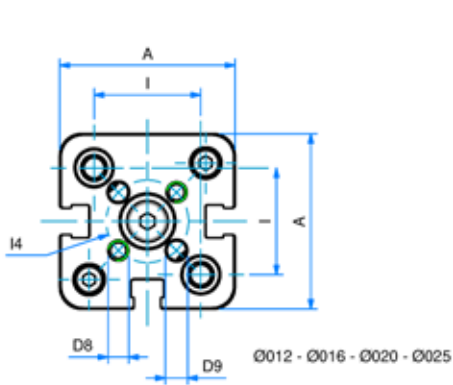
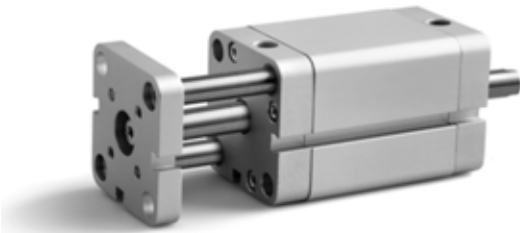
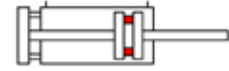
012	5 - 10 - 15 - 20 - 25 - 30 - 40 - 50 - 60 - 70 - 75 - 80 - 90 - 100 - 125 - 160 - 200 - 250
016	5 - 10 - 15 - 20 - 25 - 30 - 40 - 50 - 60 - 70 - 75 - 80 - 90 - 100 - 125 - 160 - 200 - 250
020	5 - 10 - 15 - 20 - 25 - 30 - 40 - 50 - 60 - 70 - 75 - 80 - 90 - 100 - 125 - 160 - 200 - 250
025	5 - 10 - 15 - 20 - 25 - 30 - 40 - 50 - 60 - 70 - 75 - 80 - 90 - 100 - 125 - 160 - 200 - 250
032	5 - 10 - 15 - 20 - 25 - 30 - 40 - 50 - 60 - 70 - 75 - 80 - 90 - 100 - 125 - 160 - 200 - 250 - 300 - 350 - 400
040	5 - 10 - 15 - 20 - 25 - 30 - 40 - 50 - 60 - 70 - 75 - 80 - 90 - 100 - 125 - 160 - 200 - 250 - 300 - 350 - 400
050	5 - 10 - 15 - 20 - 25 - 30 - 40 - 50 - 60 - 70 - 75 - 80 - 90 - 100 - 125 - 160 - 200 - 250 - 300 - 350 - 400
063	5 - 10 - 15 - 20 - 25 - 30 - 40 - 50 - 60 - 70 - 75 - 80 - 90 - 100 - 125 - 160 - 200 - 250 - 300 - 350 - 400
080	5 - 10 - 15 - 20 - 25 - 30 - 40 - 50 - 60 - 70 - 75 - 80 - 90 - 100 - 125 - 160 - 200 - 250 - 300 - 350 - 400
100	5 - 10 - 15 - 20 - 25 - 30 - 40 - 50 - 60 - 70 - 75 - 80 - 90 - 100 - 125 - 160 - 200 - 250 - 300 - 350 - 400

 SERIE
A

DOPPIO EFFETTO MAGNETICO STELO PASSANTE ANTIROTAZIONE

DOUBLE ACTING MAGNETIC ANTI-ROTATION WITH DOUBLE ROD

SERIE
A



DOPPIO EFFETTO MAGNETICO STELO PASSANTE ANTIROTAZIONE

DOUBLE ACTING MAGNETIC ANTI-ROTATION WITH DOUBLE ROD

DIMENSIONI - DIMENSIONS

Ø	016	020	025	032	040	050	063	080	100
A	29	36	40	50	58	67	80	100	124
Ø D	8	10	10	12	12	16	16	20	25
D1	M4	M5	M5	M6	M6	M8	M8	M10	M12
D4	M4	M5	M5	M6	M6	M8	M10	M10	M10
Ø D5	-	-	-	9	9	10,5	13,5	13,5	13,5
Ø D6	9	11	14	17	17	22	22	28	30
Ø D7	5	5	6	8	10	10	10	14	14
D8	M3	M4	M5	M5	M5	M6	M6	M8	M10
Ø D9	3	4	5	5	5	6	6	8	10
F4	-	-	-	4	3	-	-	-	-
G	M5	M5	M5	G1/8	G1/8	G1/8	G1/8	G1/8	G1/4
H+	38	38	39,5	44,5	45,5	45,5	50	56	66,5
H3	8	8	8	8	8	8	8	8,5	10,5
I	18	22	26	32	42	50	62	82	103
I4	14	17	22	28	33	42	50	65	80
I10	-	-	-	-	-	12,5	14	18	35
I11	-	-	-	5	3	10,5	12	12	17,5
K	6	8	8	10	10	13	13	17	22
L	-	-	-	5,5	5,5	6,5	8,5	8,5	8,5
S	20	22	22	22	22	24	24	32	40
T	M8	M10x1,25	M10x1,25	M10x1,25	M10x1,25	M12x1,25	M12x1,25	M16x1,5	M20x1,5
P	11	12	12	15	15	17	17	17	22
W	4,5	4,5	5,5	6	6,5	7,5	7,5	8	10
W+	4,5	4,5	5,5	6	6,5	7,5	7,5	8	10
S1	6	8	8	10	10	12	12	14	14

+ = aggiungere lunghezza corsa (mm) - add stroke length (mm)

Ø CORSE STANDARD - STANDARD STROKES

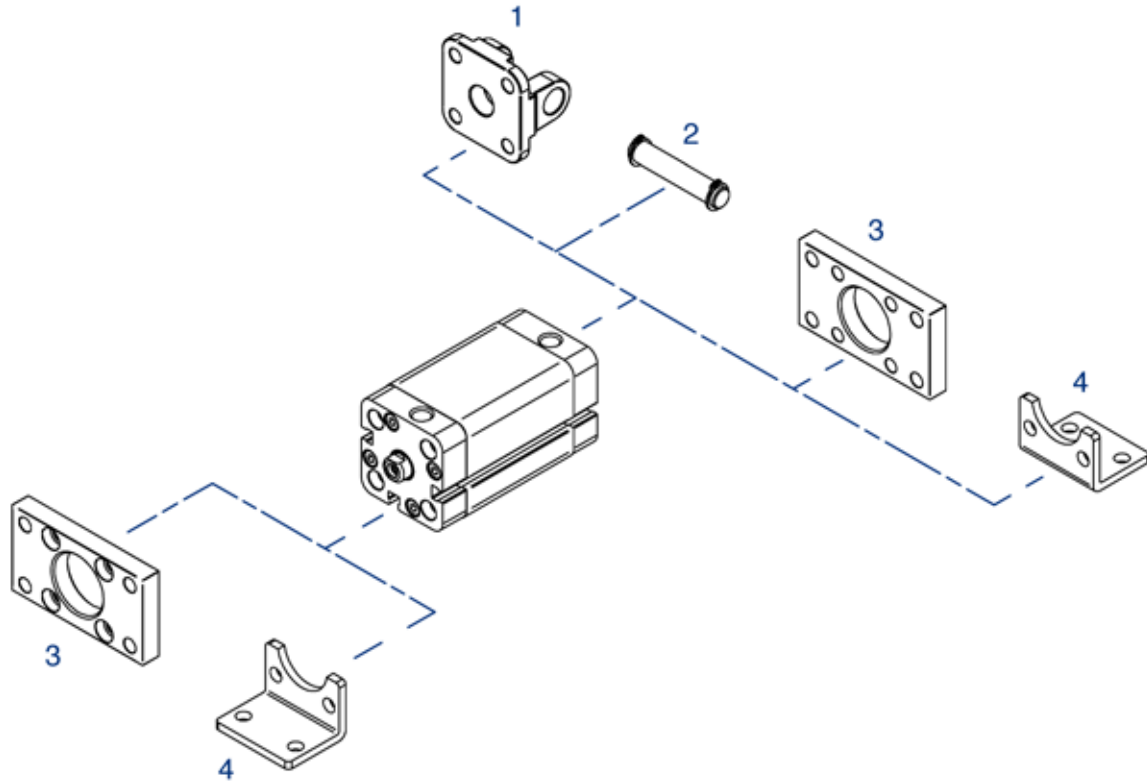
016	5 - 10 - 15 - 20 - 25 - 30 - 40 - 50 - 60 - 70 - 75 - 80 - 90 - 100 - 125 - 160 - 200
020	5 - 10 - 15 - 20 - 25 - 30 - 40 - 50 - 60 - 70 - 75 - 80 - 90 - 100 - 125 - 160 - 200
025	5 - 10 - 15 - 20 - 25 - 30 - 40 - 50 - 60 - 70 - 75 - 80 - 90 - 100 - 125 - 160 - 200
032	5 - 10 - 15 - 20 - 25 - 30 - 40 - 50 - 60 - 70 - 75 - 80 - 90 - 100 - 125 - 160 - 200 - 250 - 300 - 350 - 400
040	5 - 10 - 15 - 20 - 25 - 30 - 40 - 50 - 60 - 70 - 75 - 80 - 90 - 100 - 125 - 160 - 200 - 250 - 300 - 350 - 400
050	5 - 10 - 15 - 20 - 25 - 30 - 40 - 50 - 60 - 70 - 75 - 80 - 90 - 100 - 125 - 160 - 200 - 250 - 300 - 350 - 400
063	5 - 10 - 15 - 20 - 25 - 30 - 40 - 50 - 60 - 70 - 75 - 80 - 90 - 100 - 125 - 160 - 200 - 250 - 300 - 350 - 400
080	5 - 10 - 15 - 20 - 25 - 30 - 40 - 50 - 60 - 70 - 75 - 80 - 90 - 100 - 125 - 160 - 200 - 250 - 300 - 350 - 400
100	5 - 10 - 15 - 20 - 25 - 30 - 40 - 50 - 60 - 70 - 75 - 80 - 90 - 100 - 125 - 160 - 200 - 250 - 300 - 350 - 400

ACCESSORI DI FISSAGGIO UNITOP

UNITOP MOUNTING PARTS

SERIE

A



POS.	CODE	DESCRIZIONE - DESCRIPTION
1	CFU---	cerniera femmina unitop - unitop female hinge
2	PCF---	perno per cerniera - pin for hinge
3	FU---	flangia unitop - unitop flange
4	PBU---	pedino basso unitop - unitop foot mounting

Dimensioni accessori: vedi sezione SERIE W

Accessories dimensions: see SERIE W chapter



Realized and distributed by
Triveneta automazioni s.r.l.
via Carlo Rosselli, 36 - 36061 Bassano del Grappa (VI)
tel. 0424/505152 - fax 0424/505189

www.triveneta.it - www.t3components.com
amministrazione@triveneta.it
sales.manager@triveneta.it
info@t3components.com





TRIVENETA AUTOMAZIONI s.r.l.

Tel. 0424 505152 - Fax 0424 505189

info@t3components.com

www.t3components.com