

MINICILINDRI INOX ISO 6432 Ø16-25 ISO 6432 STAINLESS STEEL MINI-CYLINDERS Ø16-25



Cilindri costruiti a norma ISO6432

Altamente resistenti con testate cianfrinate e interamente realizzati in acciaio inox. Disponibili in versione magnetica o non, con o senza ammortizzo regolabile, doppio effetto, a stelo singolo o passante. Ampia gamma di accessori.

Su richiesta sono fornibili in varie esecuzioni speciali ed in versione conforme alla direttiva 2014/34/UE ATEX.

ISO 6432 cylinders

Highly resistant with crimped covers and entirely built in stainless steel. Available with or without magnet, with or without adjustable cushioning, double acting, single or through piston rod.

Wide range of mounting accessories. Special versions are available. On request compliant with 2014/34/UE ATEX directive.

VERSIONE VERSION

CDE		CDEP	
CDEM		CDEMP	
CDEA		CDEAP	
CDEMA		CDEMAP	

INFORMAZIONI TECNICHE TECHNICAL INFORMATION

Testate Covers	Acciaio inox AISI304 AISI304 Stainless steel
Tubo Tube	Acciaio inox AISI304 AISI304 Stainless steel
Pistone Piston	Ottone Brass
Guarnizioni Seals	Poliuretano Polyurethane
Boccola guida Guiding bush	Bronzo sinterizzato Sintered bronze
Stelo Piston rod	Acciaio inox AISI316 AISI316 Stainless steel
Pressione MAX MAX pressure	10 bar
Temperatura di impiego Working temperature	-35°C +80°C con aria secca -35°C +80°C with dry air
Fluido Working fluid	Aria compressa filtrata e lubrificata e non Filtered and lubricated or not compressed air

CHIAVI DI CODIFICA CYLINDERS KEY CODE

Versione Version		Diametro Diameter	Corsa Stroke	Tipo costruttivo Design Type
CDEMI		20	100	V
CDEI	Doppio effetto non magnetico Double acting non magnetic	16	0...1000	- Standard
CDEMI	Doppio effetto magnetico Double acting magnetic	20		V Guarnizioni FKM FKM seals
CDEAI	Doppio effetto con ammortizzo regolabile non magnetico Double acting with adjustable cushioning non magnetic	25		VG Guarnizione stelo FKM FKM rod seal
CDEMAI	Doppio effetto con ammortizzo regolabile magnetico Double acting with adjustable cushioning magnetic			
CDEPI	Doppio effetto stelo passante non magnetico Double acting through rod non magnetic			
CDEMPI	Doppio effetto stelo passante magnetico Double acting through rod magnetic			
CDEAPI	Doppio effetto stelo passante con ammortizzo regolabile non magnetico Double acting through rod with adjustable cushioning non magnetic			
CDEMAPI	Doppio effetto stelo passante con ammortizzo regolabile magnetico Double acting through rod with adjustable cushioning magnetic			

Nota: versioni con ammortizzo regolabile disponibili solo nei diametri 20 e 25.

Note: versions with adjustable cushioning are available for diameter 20 and 25 only.


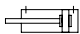





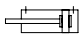


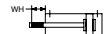
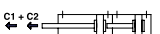

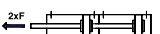

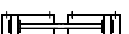
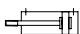

CORSE STANDARD STANDARD STROKES

Ø (mm)	Corse standard (mm) Standard strokes (mm)													
	10	25	40	50	80	100	125	160	200	250	300	320	400	500
16	10	25	40	50	80	100	125	160	200					
20	10	25	40	50	80	100	125	160	200	250	300	320		
25	10	25	40	50	80	100	125	160	200	250	300	320	400	500

FORZE TEORICHE A 6 BAR THEORETICAL FORCES AT 6 BAR

Ø (mm)	Forza di spinta (N) Thrust force (N)	Forza di trazione (N) Traction force (N)
16	121	104
20	189	158
25	294	247

VARIANTI VARIANTS

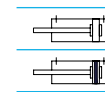
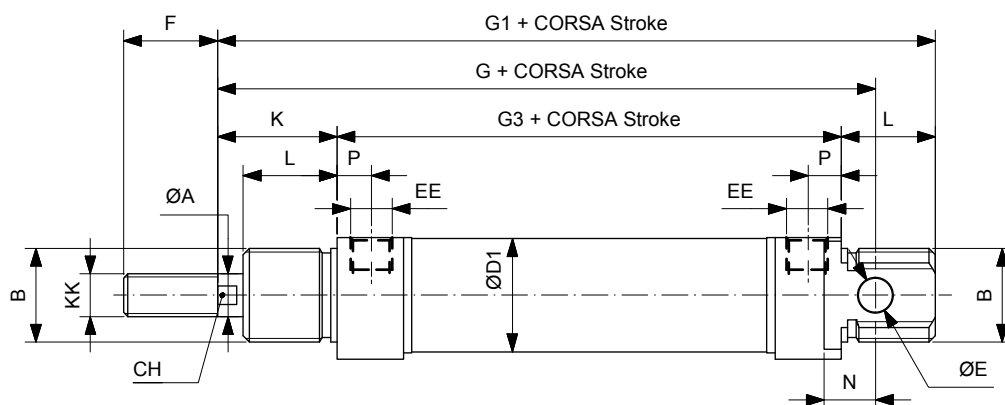
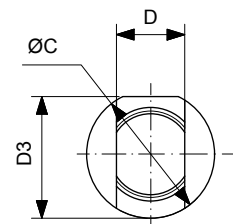
Simbolo Symbol	Caratteristiche Features	Simbolo Symbol	Caratteristiche Features
 	Resistente alle alte temperature -10...+150°C Heat-resistant -10...+150°C	 	Certificazione ATEX  ATEX certification 
 	Resistente alle basse temperature -40...+80°C Low temperature resistant -40...+80°C	 	Guarnizione stelo ad elevata resistenza chimica Rod seal with increased chemical resistance
	Stelo prolungato Piston rod extension		Configurazione tandem a più posizioni Multi position configuration
	Basso attrito Low friction		Configurazione tandem a doppia spinta Double thrust tandem configuration
	Lubrificazione FDA FDA lubrication		Configurazione tandem contrapposti anteriore Front opposed tandem configuration
	Filettature e steli su richiesta Custom made thread or piston rod		Configurazione tandem contrapposti posteriore Rear opposed tandem configuration

MINICILINDRI INOX ISO 6432 Ø16-25 ISO 6432 STAINLESS STEEL MINI-CYLINDERS Ø16-25

DOPPIO EFFETTO
DOUBLE ACTING

CDEIØ/...

CDEMIØ/...

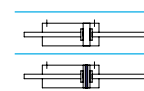
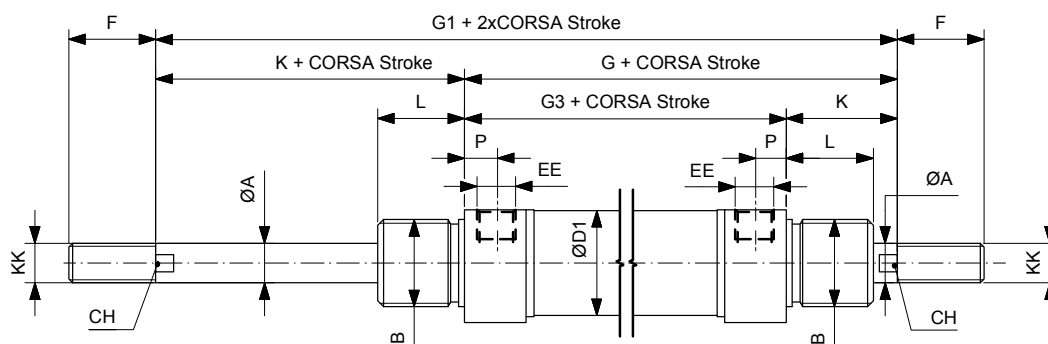
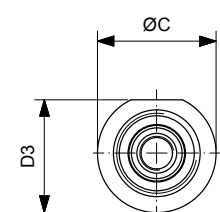


Ømm	ØA	B	ØC	CH	D	ØD1	D3	ØE	EE	F	G	G1	G3	K	KK	L	N	P
16	6	M16x1.5	19	5	12	17.27	18	6	M5	16	82	93	53	22	M6x1	18	9	4.5
20	8	M22x1.5	27	7	16	21.27	25.5	8	1/8"G	20	95	111	67	24	M8x1.25	20	12	8
25	10	M22x1.5	30	9	16	26.5	28.5	8	1/8"G	22	104	118	68	28	M10x1.25	22	12	8

DOPPIO EFFETTO PASSANTE
DOUBLE ACTING THROUGH PISTON ROD

CDEPIØ/...

CDEMPIØ/...

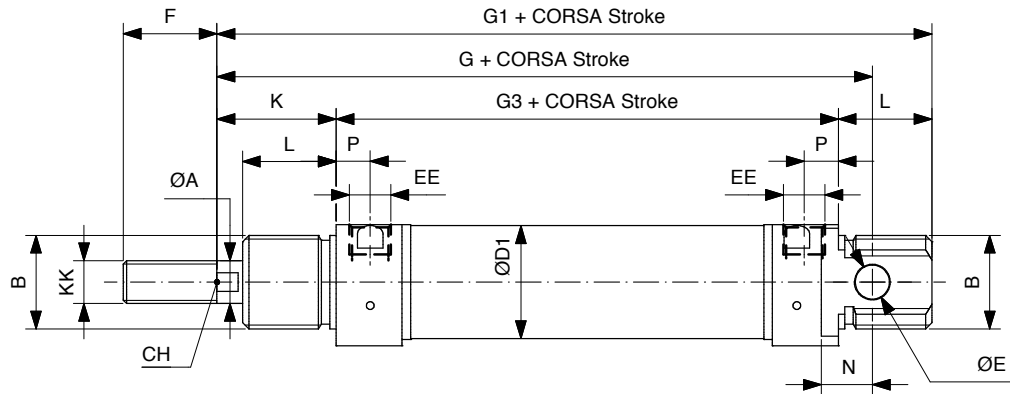
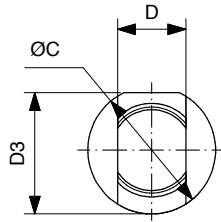


Ømm	A	B	ØC	CH	ØD1	D3	EE	F	G	G1	G3	K	KK	L	P
16	6	M16x1.5	19	5	17.27	18	M5	16	75	97	53	22	M6x1	18	4.5
20	8	M22x1.5	27	7	21.27	25.5	1/8"G	20	91	115	67	24	M8x1.25	20	8
25	10	M22x1.5	30	9	26.5	28.5	1/8"G	22	96	124	68	28	M10x1.25	22	8

DOPPIO EFFETTO AMMORTIZZATO
DOUBLE ACTING CUSHIONED

CDEAIØ/...

CDEMAIØ/...

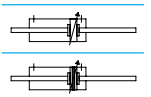
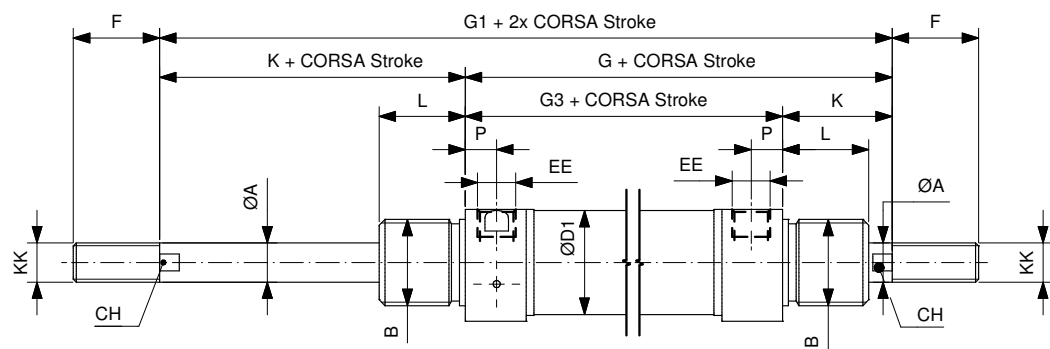
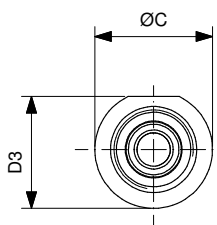


Ømm	ØA	B	ØC	CH	D	ØD1	D3	ØE	EE	F	G	G1	G3	K	KK	L	N	P
20	8	M22x1.5	27	7	16	21.27	25.5	8	1/8"G	20	95	111	67	24	M8x1.25	20	12	8
25	10	M22x1.5	30	9	16	26.5	28.5	8	1/8"G	22	104	118	68	28	M10x1.25	22	12	8

DOPPIO EFFETTO AMMORTIZZATO PASSANTE
DOUBLE ACTING CUSHIONED THROUGH PISTON ROD

CDEAPIØ/...

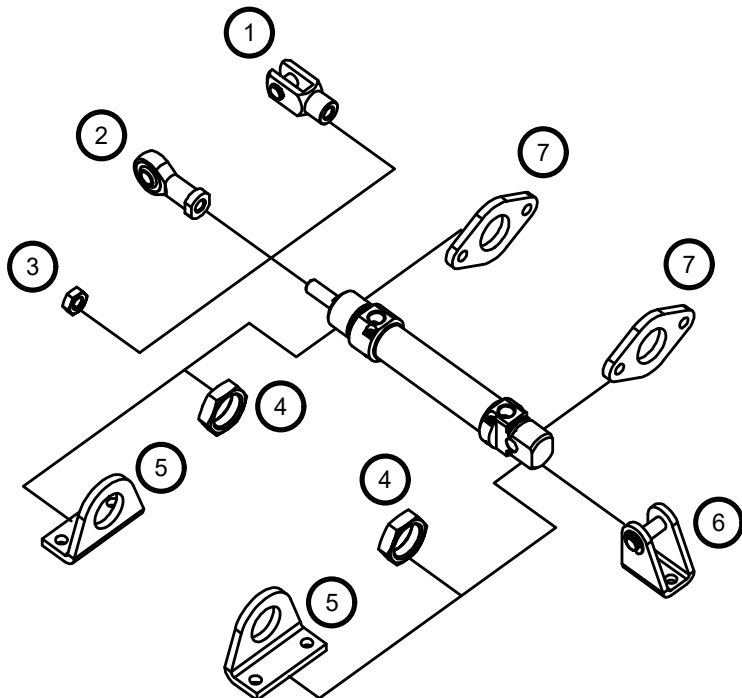
CDEMAPIØ/...



Ømm	ØA	B	ØC	CH	ØD1	D3	EE	F	G	G1	G3	K	KK	L	P
20	8	M22x1.5	27	7	21.27	25.5	1/8"G	20	91	115	67	24	M8x1.25	20	8
25	10	M22x1.5	30	9	26.5	28.5	1/8"G	22	96	124	68	28	M10x1.25	22	8

MINICILINDRI INOX ISO 6432 Ø16-25 ISO 6432 STAINLESS STEEL MINI-CYLINDERS Ø16-25

ACCESSORI DI FISSAGGIO MOUNTING ACCESSORIES



Descrizione Description	Acciaio inox Stainless steel
1 Forcella / Clevis	147
2 Testa a snodo / Rod end	148
3 Dado per stelo / Piston rod nut	146
4 Dado testata / Cover nut	146
5 Piedino / Foot (MS3)	149
6 Cerniera / Hinge (MP3)	148
7 Flangia / Flange (MF8)	149