

CILINDRI TONDI INOX CP95 Ø32-63 STAINLESS STEEL CP95 ROUND CYLINDERS Ø32-63



Cilindri tondi ø32-63

Altamente resistenti con testate cianfrinate e interamente realizzati in acciaio inox.

Disponibili in versione magnetica o non, con o senza ammortizzo regolabile, doppio effetto, a stelo singolo o passante.

Ampia gamma di accessori.

Su richiesta sono fornibili in varie esecuzioni speciali ed in versione conforme alla direttiva 2014/34/UE ATEX.

Round cylinders ø32-63

Highly resistant with crimped covers and entirely built in stainless steel. Available with or without magnet, with or without adjustable cushioning, double acting, single or through piston rod.

Wide range of mounting accessories. Special versions are available. On request compliant with 2014/34/UE ATEX directive.

VERSIONE VERSION

CDE		CDEP	
CDEM		CDEMP	
CDEA		CDEAP	
CDEMA		CDEMAP	

INFORMAZIONI TECNICHE TECHNICAL INFORMATION

Testate Covers	Acciaio inox AISI304 AISI304 Stainless steel
Tubo Tube	Acciaio inox AISI304 AISI304 Stainless steel
Pistone Piston	Alluminio Aluminium
Guarnizioni Seals	Poliuretano Polyurethane
Boccola guida Guiding bush	Bronzo sinterizzato Sintered bronze
Stelo Piston rod	Acciaio inox AISI316 AISI316 Stainless steel
Pressione MAX MAX pressure	10 bar
Temperatura di impiego Working temperature	-35°C +80°C con aria secca -35°C +80°C with dry air
Fluido Working fluid	Aria compressa filtrata e lubrificata e non Filtered and lubricated or not compressed air

CHIAVI DI CODIFICA CYLINDERS KEY CODE

Versione Version		Diametro Diameter	Corsa Stroke	Tipo costruttivo Design Type
CDEMAI		50	50	-
CDEI	Doppio effetto non magnetico Double acting non magnetic	32	0...1000	- Standard
CDEMI	Doppio effetto magnetico Double acting magnetic	40		V Guarnizioni FKM FKM seals
CDEAI	Doppio effetto con ammortizzo regolabile non magnetico Double acting with adjustable cushioning non magnetic	50		VG Guarnizione stelo FKM FKM rod seal
CDEMAI	Doppio effetto con ammortizzo regolabile magnetico Double acting with adjustable cushioning magnetic	63		
CDEPI	Doppio effetto stelo passante non magnetico Double acting through rod non magnetic			
CDEMPI	Doppio effetto stelo passante magnetico Double acting through rod magnetic			
CDEAPI	Doppio effetto stelo passante con ammortizzo regolabile non magnetico Double acting through rod with adjustable cushioning non magnetic			
CDEMAPI	Doppio effetto stelo passante con ammortizzo regolabile magnetico Double acting through rod with adjustable cushioning magnetic			

Nota: versioni con ammortizzo regolabile disponibili solo nei diametri 32 e 40.

Note: versions with adjustable cushioning are available for diameters 32 and 40 only.






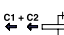


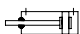

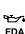
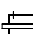
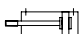
CORSE STANDARD STANDARD STROKES

Ø (mm)	Corse standard (mm) Standard strokes (mm)										
	10	25	40	50	80	100	125	160	200	250	300
32	10	25	40	50	80	100	125	160	200	250	300
40	10	25	40	50	80	100	125	160	200	250	300
50	10	25	40	50	80	100	125	160	200	250	300
63	10	25	40	50	80	100	125	160	200	250	300

FORZE TEORICHE A 6 BAR THEORETICAL FORCES AT 6 BAR

Ø (mm)	Forza di spinta (N) Thrust force (N)	Forza di trazione (N) Traction force (N)
32	482	414
40	754	633
50	1178	989
63	1869	1681

VARIANTI VARIANTS

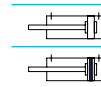
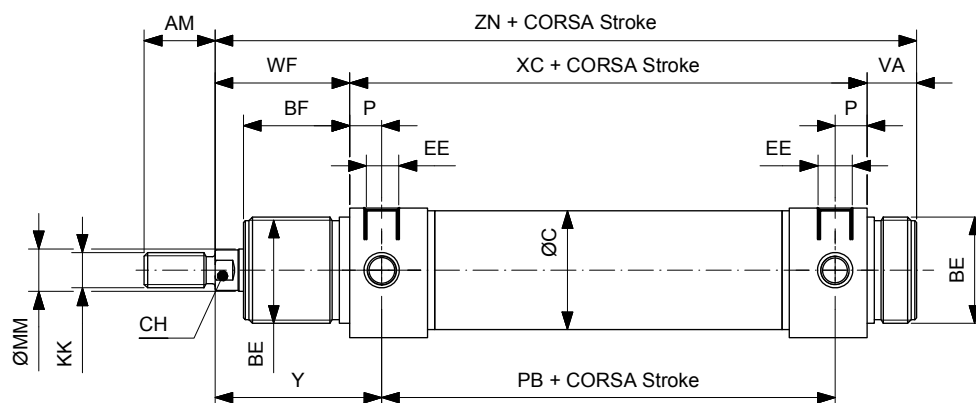
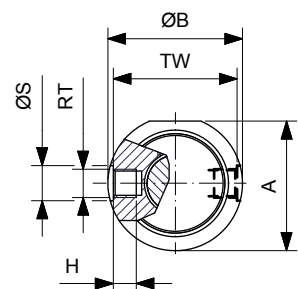
Simbolo Symbol	Caratteristiche Features	Simbolo Symbol	Caratteristiche Features
	Resistente alle alte temperature -10...+150°C Heat-resistant -10...+150°C		Certificazione ATEX ATEX certification
	Resistente alle basse temperature -40...+80°C Low temperature resistant -40...+80°C		Guarnizione stelo ad elevata resistenza chimica Rod seal with increased chemical resistance
	Stelo prolungato Piston rod extension		Configurazione tandem a più posizioni Multi position configuration
	Basso attrito Low friction		Configurazione tandem a doppia spinta Double thrust tandem configuration
	Raschia stelo duro in poliestere Hard wiper in polyester		Configurazione tandem contrapposti anteriore Front opposed tandem configuration
	Lubrificazione FDA FDA lubrication		Configurazione tandem contrapposti posteriore Rear opposed tandem configuration
	Filettature e steli su richiesta Custom made thread or piston rod		

CILINDRI TONDI INOX CP95 Ø32-63 STAINLESS STEEL CP95 ROUND CYLINDERS Ø32-63

DOPPIO EFFETTO
DOUBLE ACTING

CDEIØ/...

CDEMIØ/...

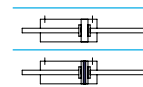
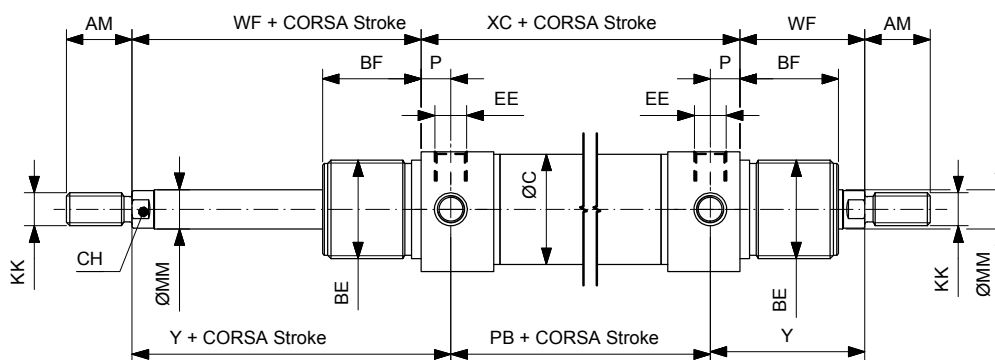
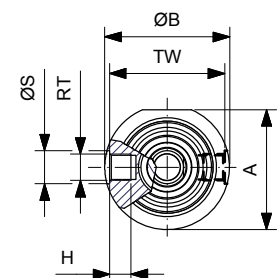


Ø mm	A	ØB	AM	BE	BF	EE	KK	TW	H	ØS	RT	ØMM	PB	VA	WF	Y	ZN	ØC	P	XC	CH
32	36.5	38	20	M30X1.5	30	1/8"G	M10x1.5	35	6.5	10	M8X1	12	78	14	38	47	148	33.6	9	96	10
40	44	46	24	M38x1.5	35	1/4"G	M12x1.75	42	8	12	M10x1	16	89	16	45	57	174	41.6	12	113	13
50	55	57	32	M45x1.5	38	1/4"G	M16x2	53	10	16	M12x1.5	20	96	18	50	62	188	52.4	12	120	17
63	67.5	70	32	M45x1.5	38	3/8"G	M16x2	66	17	16	M14x1.5	20	98	18	50	63	192	65.4	13	124	17

DOPPIO EFFETTO PASSANTE
DOUBLE ACTING THROUGH PISTON ROD

CDEPIØ/...

CDEMPIØ/...

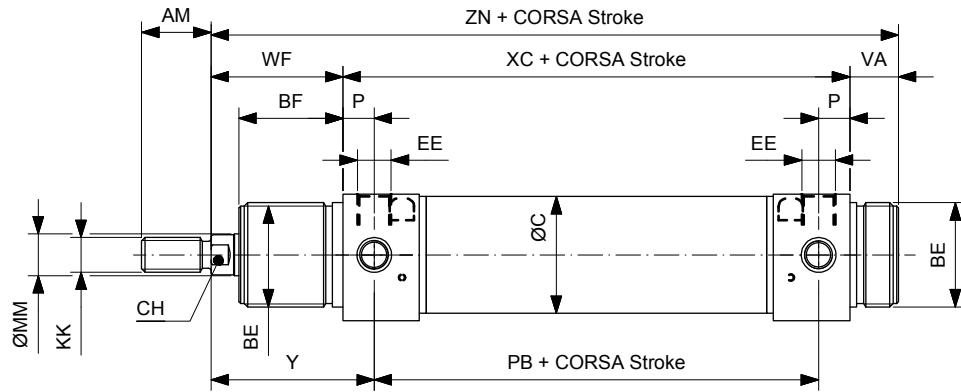
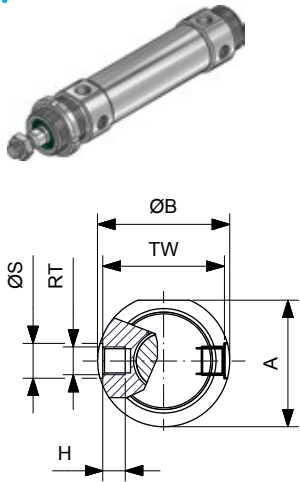


Ø mm	A	ØB	AM	BE	BF	EE	KK	TW	H	ØS	RT	ØMM	PB	WF	Y	ØC	P	XC	CH
32	36.5	38	20	M30X1.5	30	1/8"G	M10x1.5	35	6.5	10	M8X1	12	78	38	47	33.6	9	96	10
40	44	46	24	M38x1.5	35	1/4"G	M12x1.75	42	8	12	M10x1	16	89	45	57	41.6	12	113	13
50	55	57	32	M45x1.5	38	1/4"G	M16x2	53	10	16	M12x1.5	20	96	50	62	52.4	12	120	17
63	67.5	70	32	M45x1.5	38	3/8"G	M16x2	66	17	16	M14x1.5	20	98	50	63	65.4	13	124	17

DOPIO EFFETTO AMMORTIZZATO
DOUBLE ACTING CUSHIONED

CDEAIØ/...

CDEMAIØ/...

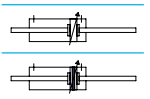
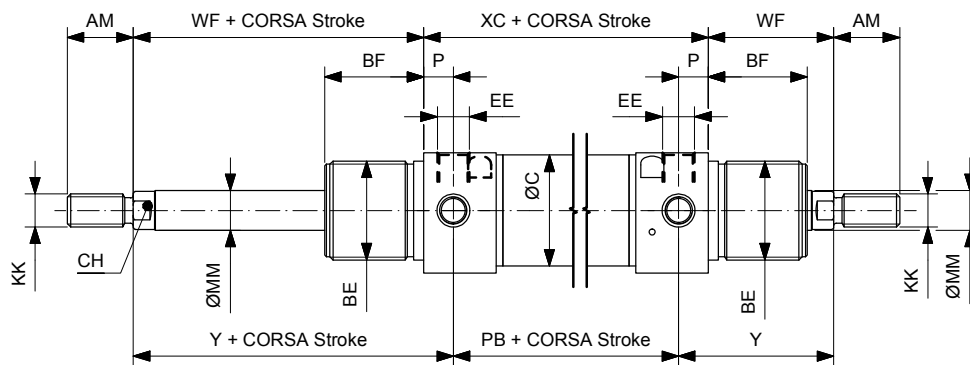
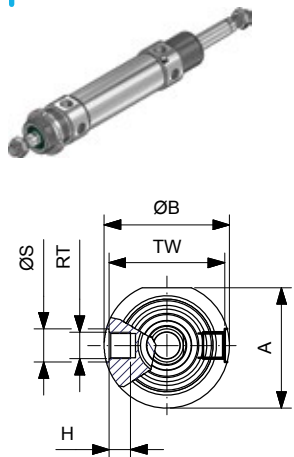


Ømm	A	ØB	AM	BE	BF	EE	KK	TW	H	ØS	RT	ØMM	PB	VA	WF	Y	ZN	ØC	P	XC	CH
32	36.5	38	20	M30x1.5	30	1/8"G	M10x1.5	35	6.5	10	M8x1	12	78	14	38	47	148	33.6	9	96	10
40	44	46	24	M38x1.5	35	1/4"G	M12x1.75	42	8	12	M10x1	16	89	16	45	57	174	41.6	12	113	13

DOPIO EFFETTO AMMORTIZZATO PASSANTE
DOUBLE ACTING CUSHIONED THROUGH PISTON ROD

CDEAPIØ/...

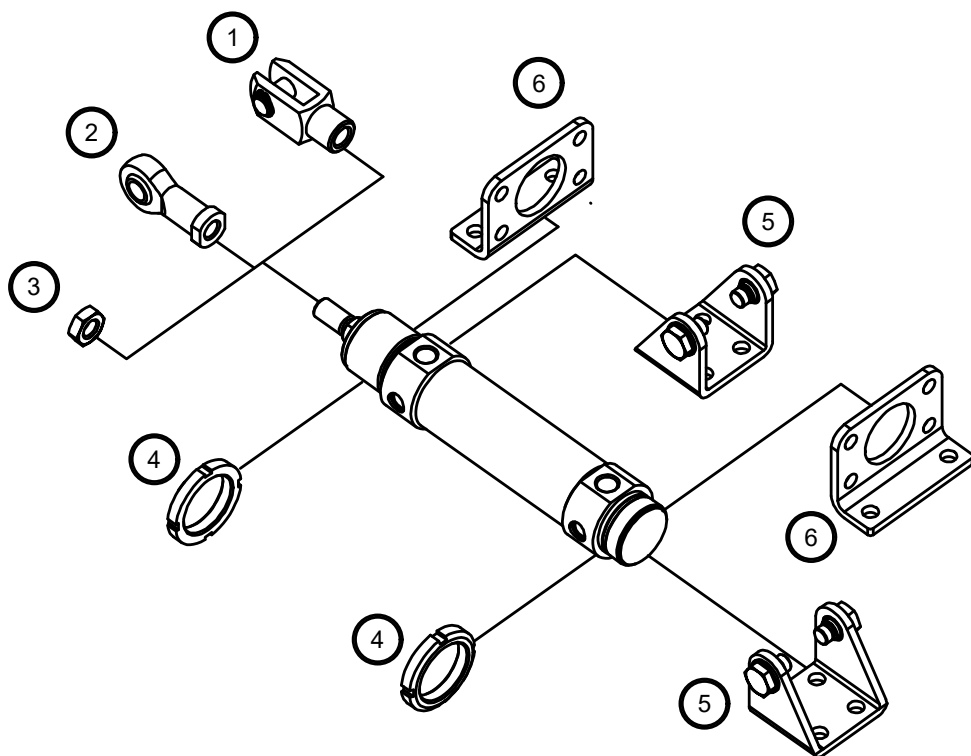
CDEMAPIØ/...



Ømm	A	ØB	AM	BE	BF	EE	KK	TW	H	ØS	RT	ØMM	PB	WF	Y	ØC	P	XC	CH
32	36.5	38	20	M30x1.5	30	1/8"G	M10x1.5	35	6.5	10	M8x1	12	78	38	47	33.6	9	96	10
40	44	46	24	M38x1.5	35	1/4"G	M12x1.75	42	8	12	M10x1	16	89	45	57	41.6	12	113	13

CILINDRI TONDI INOX CP95 Ø32-63 STAINLESS STEEL CP95 ROUND CYLINDERS Ø32-63

ACCESSORI DI FISSAGGIO MOUNTING ACCESSORIES



	Descrizione Description	Acciaio inox Stainless steel
1	Forcella / Clevis	147
2	Testa a snodo / Rod end	148
3	Dado per stelo / Piston rod nut	146
4	Ghiera / Slotted nut	147
5	Cerniera / Hinge (MP3)	154
6	Piedino flangia / Foot flange	154