

CILINDRI TONDI CP04 Ø32-40 CP04 ROUND CYLINDERS Ø32-40



Cilindri tondi Ø32-40.

Altamente resistenti con testate cianfrinate e camicia in acciaio inox.

Disponibili in versione magnetica o non, con o senza ammortizzo regolabile, a stelo singolo o passante.

Ø32-40 round cylinders.

Highly resistant with crimped covers and stainless steel barrel.

Available with or without magnet, with or without adjustable cushioning, single or through piston rod.

VERSIONE VERSION

CDE		CDEP	
CDEM		CDEMP	
CDEA		CDEAP	
CDEMA		CDEMAP	

INFORMAZIONI TECNICHE TECHNICAL INFORMATION

Testate Covers	Alluminio anodizzato Anodized Aluminium
Tubo Tube	Acciaio inox AISI304 AISI304 Stainless steel
Pistone Piston	Alluminio Aluminium
Guarnizioni Seals	Poliuretano - NBR Polyurethane - NBR
Boccola guida Guiding bush	Bronzo sinterizzato Sintered bronze
Stelo Piston rod	Acciaio inox AISI303 AISI303 Stainless steel
Pressione MAX MAX pressure	10 bar
Temperatura di impiego Working temperature	-20°C +80°C con aria secca -20°C +80°C with dry air
Fluido Working fluid	Aria compressa filtrata e lubrificata e non Filtered and lubricated or not compressed air

CHIAVI DI CODIFICA CYLINDERS KEY CODE

CDEMA		32	100	D	VG
Versione Version	Diametro Diameter	Corsa Stroke	Tipo costruttivo Design Type		Guarnizioni Seals
CDE	Doppio effetto non magnetico Double acting non magnetic	32	0...1000	D	- Standard
CDEM	Doppio effetto magnetico Double acting magnetic	40		DRR	v Guarnizioni FKM FKM seals
CDEA	Doppio effetto con ammortizzo regolabile non magnetico Double acting with adjustable cushioning non magnetic			DRA	VG Guarnizione stelo FKM FKM rod seal
CDEMA	Doppio effetto con ammortizzo regolabile magnetico Double acting with adjustable cushioning magnetic				
CDEP	Doppio effetto stelo passante non magnetico Double acting through rod non magnetic				
CDEMP	Doppio effetto stelo passante magnetico Double acting through rod magnetic				
CDEAP	Doppio effetto stelo passante con ammortizzo regolabile non magnetico Double acting through rod with adjustable cushioning non magnetic				
CDEMAP	Doppio effetto stelo passante con ammortizzo regolabile magnetico Double acting through rod with adjustable cushioning magnetic				


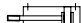


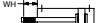



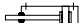

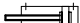

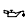
CORSE STANDARD STANDARD STROKES

Ø (mm)	Corse standard (mm) Standard strokes (mm)											
	10	25	40	50	80	100	125	160	200	250	300	
32	10	25	40	50	80	100	125	160	200	250	300	
40	10	25	40	50	80	100	125	160	200	250	300	

FORZE TEORICHE A 6 BAR THEORETICAL FORCES AT 6 BAR

Ø (mm)	Forza di spinta (N) Thrust force (N)	Forza di trazione (N) Traction force (N)
32	482	414
40	754	633

VARIANTI VARIANTS

Simbolo Symbol	Caratteristiche Features	Simbolo Symbol	Caratteristiche Features
	Resistente alle alte temperature -10...+150°C Heat-resistant -10...+150°C		Filettature e steli su richiesta Custom made thread or piston rod
	Resistente alle basse temperature -40...+80°C Low temperature resistant -40...+80°C		Guarnizione stelo ad elevata resistenza chimica Rod seal with increased chemical resistance
	Stelo prolungato Piston rod extension		Configurazione tandem a più posizioni Multi position configuration
	Basso attrito Low friction		Configurazione tandem a doppia spinta Double thrust tandem configuration
	Raschia stelo duro in poliestere Hard wiper in polyester		Configurazione tandem contrapposti anteriore Front opposed tandem configuration
	Stelo in acciaio inox Stainless steel piston rod		Configurazione tandem contrapposti posteriore Rear opposed tandem configuration
	Lubrificazione FDA FDA lubrication		

CILINDRI TONDI CP04 Ø32-40 CP04 ROUND CYLINDERS Ø32-40

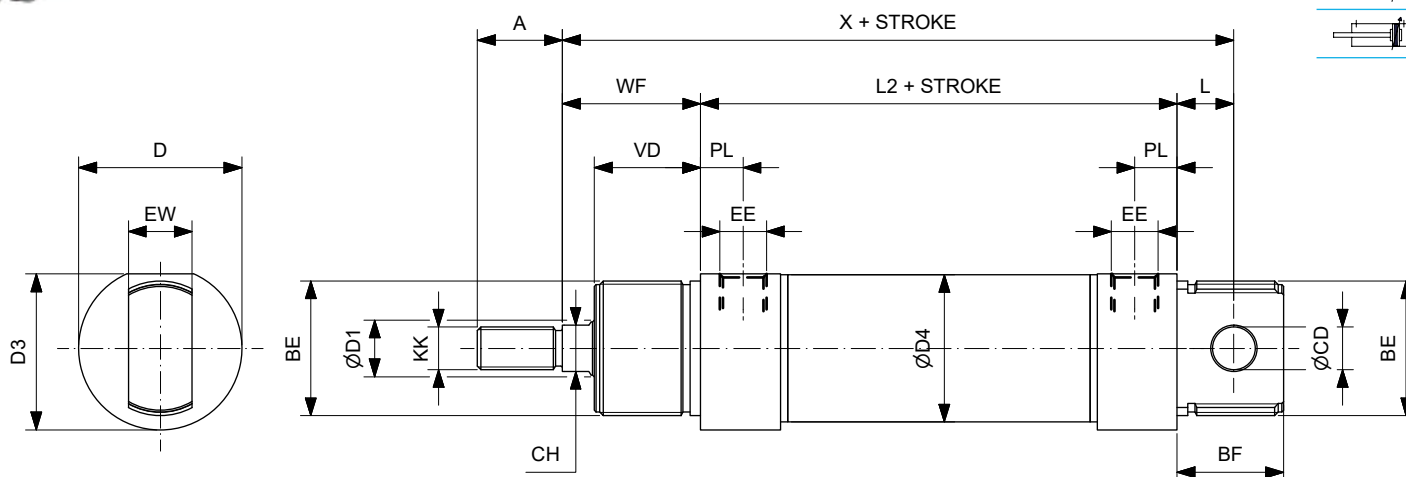
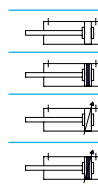
**DOPPIO EFFETTO
DOUBLE ACTING**

CDEØ/...D

CDEMØ/...D

CDEAØ/...D

CDEMAØ/...D



Ømm	ØD1	KK	A	CH	BE	WF	VD	PL	EE	X	L2	L	ØD4	ØCD	BF	D	EW	D3
32	12	M10X1.25	22	10	M30X1.5	34	26	9	1/8"G	117.5	69.5	14	33.6	10	26	38	16	36.5
40	16	M12X1.25	24	13	M38X1.5	39	30	12	1/4"G	139.5	84.5	16	41.6	12	30	46	18	44

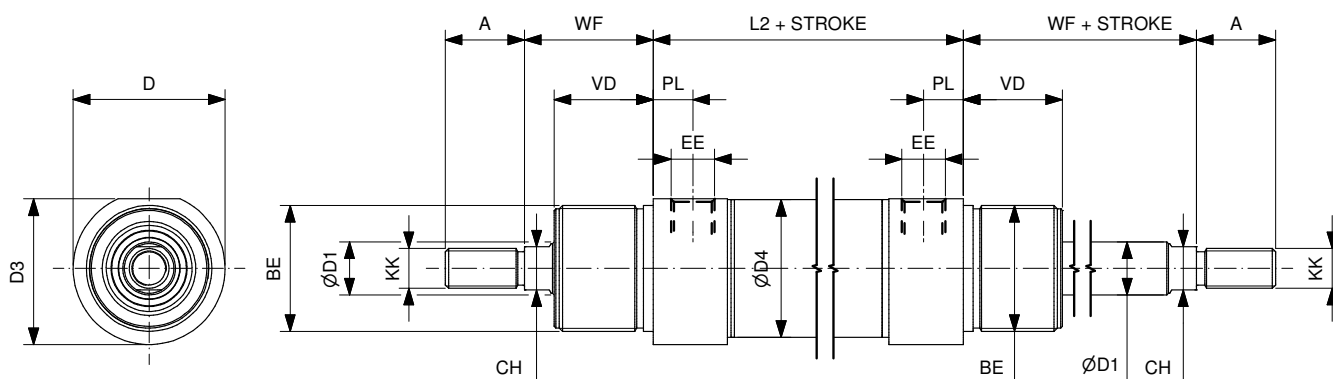
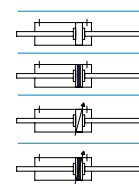
**DOPPIO EFFETTO PASSANTE
DOUBLE ACTING THROUGH PISTON ROD**

CDEPØ/...D

CDEMPØ/...D

CDEAPØ/...D

CDEMAPØ/...D

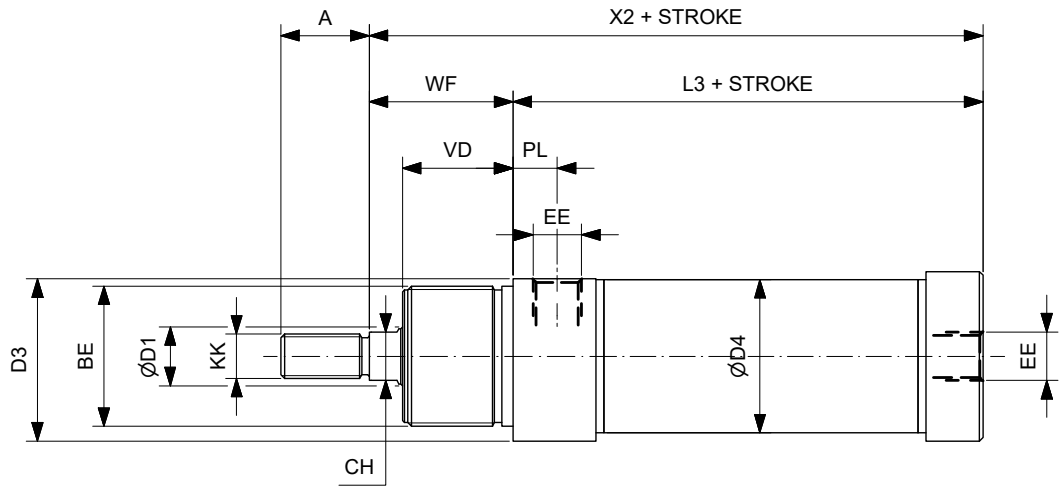
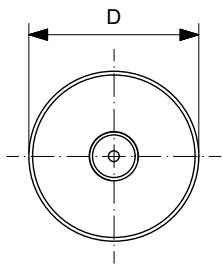


Ømm	ØD1	KK	A	CH	BE	WF	VD	PL	EE	L2	ØD4	D	D3
32	12	M10X1.25	22	10	M30X1.5	34	26	9	1/8"G	69.5	33.6	38	36.5
40	16	M12X1.25	24	13	M38X1.5	39	30	12	1/4"G	84.5	41.6	46	44

SERIE CORTA RA DOPPIO EFFETTO
SHORT SERIES RA DOUBLE ACTING

CDEØ/...DRA

CDEMØ/...DRA



Ø mm	ØD1	KK	A	CH	BE	WF	VD	PL	EE	X2	L3	ØD4	D	D3
32	12	M10X1.25	22	10	M30X1.5	34	26	9	1/8"G	99.5	65.5	33.6	38	36.5
40	16	M12X1.25	24	13	M38X1.5	39	30	12	1/4"G	116.5	77.5	41.6	46	44

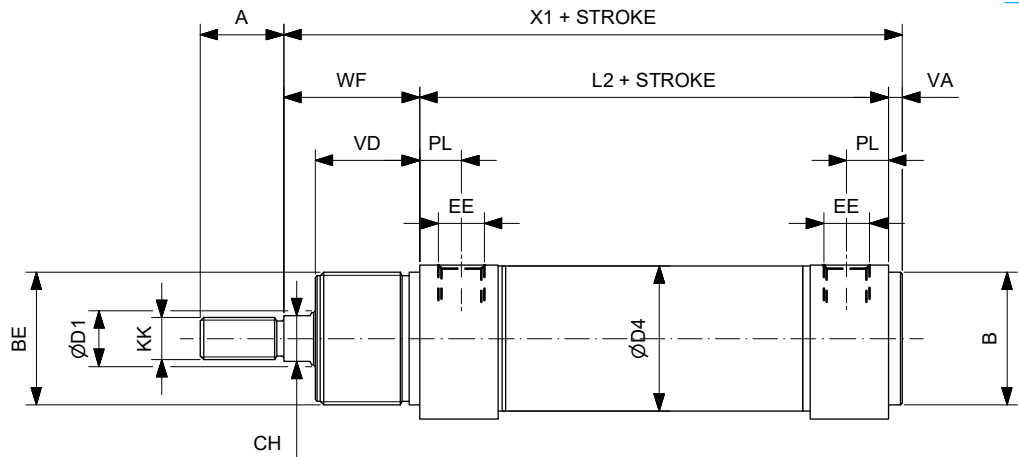
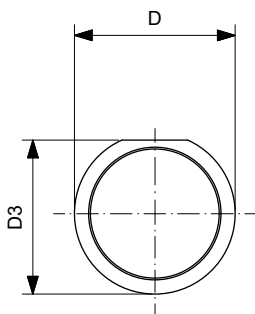
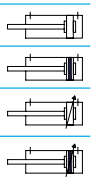
SERIE CORTA RR DOPPIO EFFETTO
SHORT SERIES RR DOUBLE ACTING

CDEØ/...DRR

CDEMØ/...DRR

CDEAØ/...DRR

CDEMAØ/...DRR



Ø mm	ØD1	KK	A	B	CH	BE	WF	VD	VA	PL	EE	X1	L2	ØD4	D	D3
32	12	M10X1.25	22	30	10	M30X1.5	34	26	3	9	1/8"G	106.5	69.5	33.6	38	36.5
40	16	M12X1.25	24	38	13	M38X1.5	39	30	4	12	1/4"G	127.5	84.5	41.6	46	44