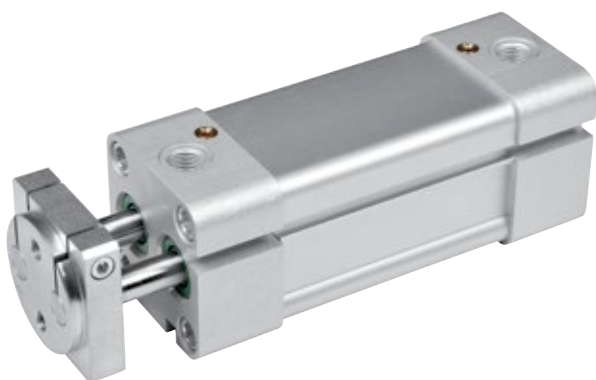


CILINDRI A STELI GEMELLATI Ø32-63 TWIN RODS CYLINDERS Ø32-63



Cilindri anti rotazione in versione con tubo profilato. Caratterizzato dal design pulito e da grande resistenza e precisione di montaggio. Disponibili in versione magnetica o non, con o senza ammortizzo regolabile.

Compatibile con la gamma di accessori ISO 15552.

Su richiesta sono fornibili in varie esecuzioni speciali.

Non-rotating cylinders, profiled tube version.

Featuring a clean design, high resistance and mounting precision. Available with or without magnet, with or without adjustable cushioning.

Compatible with ISO 15552 mounting accessories.

Special versions are available on request.

VERSIONE VERSION

CDE



CDEA



CDEM



CDEMA



INFORMAZIONI TECNICHE TECHNICAL INFORMATION

Testate Covers	Alluminio anodizzato Anodized aluminium
Tubo Tube	Alluminio anodizzato Anodized aluminium
Guarnizioni Seals	Poliuretano - NBR Polyurethane - NBR
Boccola guida Guiding bush	Bronzo sinterizzato Sintered bronze
Stelo Piston rod	Ø32-Ø40 Acciaio inox AISI303 Ø50-Ø63 Acciaio cromato Ø32-Ø40 AISI303 Stainless steel Ø50-Ø63 Chromium coated steel
Pressione MAX MAX pressure	10 bar
Temperatura di impiego Working temperature	-20°C +80°C con aria secca -20°C +80°C with dry air
Fluido Working fluid	Aria compressa filtrata e lubrificata e non Filtered and lubricated or not compressed air

CHIAVI DI CODIFICA CYLINDERS KEY CODE

Versione Version		Diametro Diameter	Corsa Stroke	Tipo costruttivo Design Type	Guarnizioni Seals
CDE	Doppio effetto non magnetico Double acting non magnetic	32	0...500	TR Steli gemellati Twin rods	- Standard
CDEM	Doppio effetto magnetico Double acting magnetic	40			V Guarnizioni FKM FKM seals
CDEA	Doppio effetto con ammortizzo regolabile non magnetico Double acting with adjustable cushioning non magnetic	50			VG Guarnizione stelo FKM FKM rod seal
CDEMA	Doppio effetto con ammortizzo regolabile magnetico Double acting with adjustable cushioning magnetic	63			

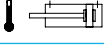
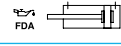
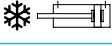
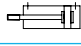
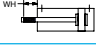
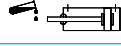
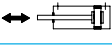
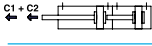
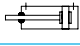

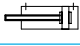

CORSE STANDARD STANDARD STROKES

Ø (mm)	Corse standard (mm) Standard strokes (mm)												
32	25	40	50	80	100	125	160	200	250	300	320	400	500
40	25	40	50	80	100	125	160	200	250	300	320	400	500
50	25	40	50	80	100	125	160	200	250	300	320	400	500
63	25	40	50	80	100	125	160	200	250	300	320	400	500

FORZE TEORICHE A 6 BAR THEORETICAL FORCES AT 6 BAR

Ø (mm)	Forza di spinta (N) Thrust force (N)	Forza di trazione (N) Traction force (N)
32	482	422
40	754	660
50	1178	1042
63	1870	1629

VARIANTI VARIANTS

Simbolo Symbol	Caratteristiche Features	Simbolo Symbol	Caratteristiche Features
	Resistente alle alte temperature -10...+150°C Heat-resistant -10...+150°C		Lubrificazione FDA FDA lubrication
	Resistente alle basse temperature -40...+80°C Low temperature resistant -40...+80°C		Filettature e steli su richiesta Custom made thread or piston rod
	Stelo prolungato Piston rod extension		Guarnizione stelo ad elevata resistenza chimica Rod seal with increased chemical resistance
	Basso attrito Low friction		Configurazione tandem a più posizioni Multi position configuration
	Raschia stelo duro in poliestere Hard wiper in polyester		Configurazione tandem a doppia spinta Double thrust tandem configuration
	Stelo in acciaio inox Stainless steel piston rod		Configurazione tandem contrapposti posteriore Rear opposed tandem configuration

CILINDRI A STELI GEMELLATI Ø32-63 TWIN RODS CYLINDERS Ø32-63

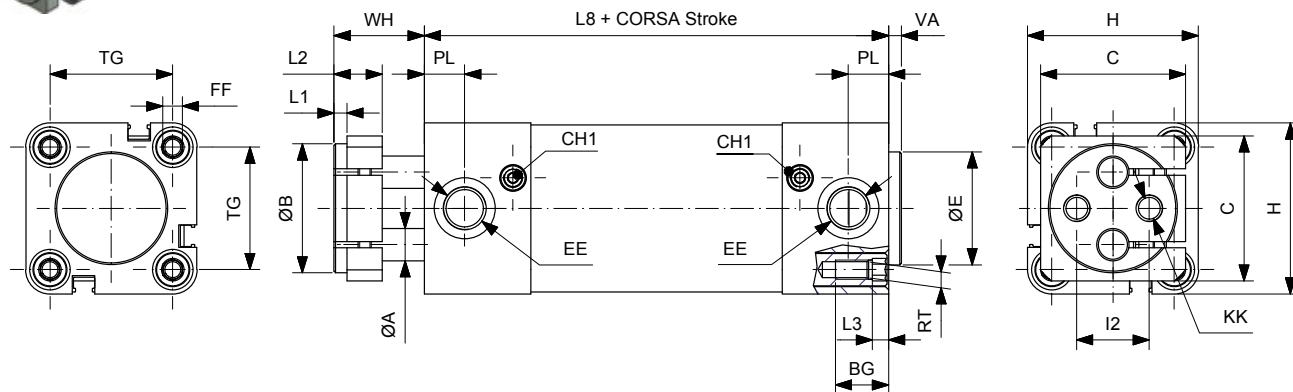
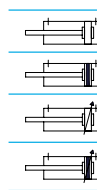
DOPPIO EFFETTO
DOUBLE ACTING

CDEØ/...TR

CDEMØ/...TR

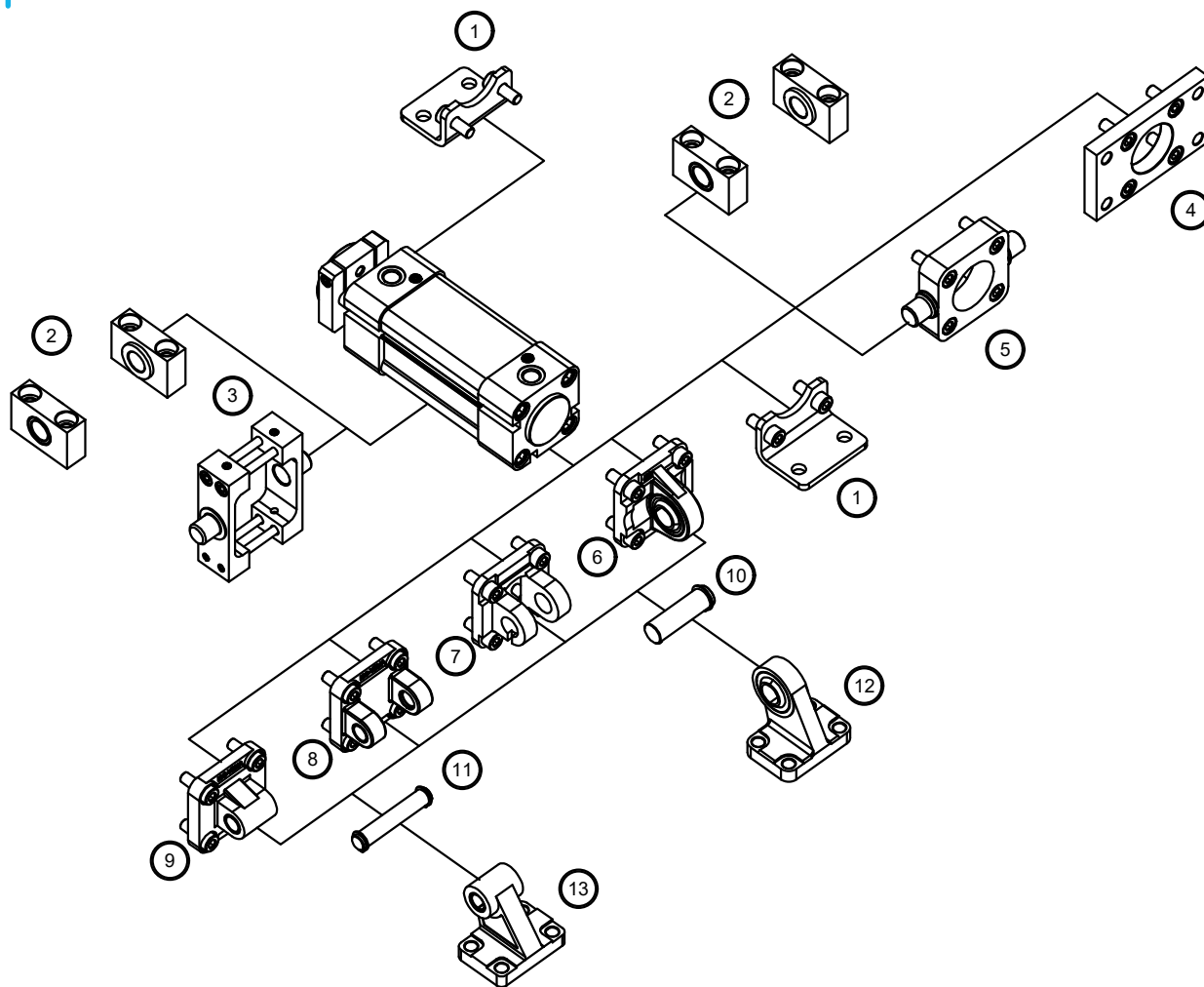
CDEAØ/...TR

CDEMAØ/...TR



Ømm	ØA	ØB	C	L1	L2	L3	VA	L8	WH	BG	TG	I2	EE	RT	FF	KK	PL	H	CH1	ØE
32	8	32	35	4	15	5	4	100	28	16.5	32.5	19	1/8"G	M6	M6	M6	12	46.5	3	30
40	10	40	45	4	15	5	4	114	28	16.5	38	22.5	1/4"G	M6	M6	M8	13	53	3	35
50	12	50	55	5	18	5	4	116	35	17.5	46.5	30	1/4"G	M8	M8	M8	14	65	3	40
63	16	63	65	5	22	5	4	124	37	17.5	56.5	38	3/8"G	M8	M8	M10	14	75	3	45

ACCESSORI DI FISSAGGIO MOUNTING ACCESSORIES



Descrizione Description	Alluminio Alluminium	Acciaio Steel	Acciaio inox Stainless steel
1 Piedino basso / Low-rise pedestal (MS1)	-	138	152
2 Supporto per cerniera intermedia / Support for intermediate hinge (AT4)	-	141	-
3 Cerniera intermedia per cilindri profilati / Intermediate hinge for profile cylinder (MT4)	-	139	-
4 Flangia / Flange (MF1-MF2)	-	139	152
5 Cerniera oscillante anteriore - posteriore / Front - rear trunnion (MT5 / MT6)	-	141	-
6 Cerniera maschio snodata / Male hinge with spherical bearing (MP6)	137	143	-
7 Cerniera stretta per snodo sferico AB6 / Clevis bracket, spherical eye, straight AB6	136	142	-
8 Cerniera femmina / Female hinge (MP2)	134	142	150
9 Cerniera maschio / Male hinge (MP4)	135	-	151
10 Perno per cerniera snodata AA6 / Pivot pin, spherical bearing AA6	-	136	-
11 Perno per cerniera femmina / Pivot for female hinge (AA4)	-	135	150
12 Articolazione a squadra con testina snodata DIN 648 K / Square joint with spherical head DIN 648 K	-	138	-
13 Articolazione a squadra / Square joint (AB7)	137	-	151