

CILINDRI A CARTUCCIA Ø6-16 CARTRIDGE CYLINDERS Ø6-16



Cilindri cartuccia con corpo filettato per il fissaggio diretto nel corpo macchina.
 Predisposti per il montaggio di o-ring esterno.
 Disponibili in versione con o senza asta filettata.

Cartridge cylinders with threaded body for fixing directly to the machine body.
 Designed with an housing for an external o-ring.
 Available with or without threaded piston rod.

VERSIONE VERSION

CSE



INFORMAZIONI TECNICHE TECHNICAL INFORMATION

Corpo Body	Ottone nichelato Nickel coated brass
Guarnizioni Seals	Ø6 NBR Ø10-16 poliuretano Ø6 NBR Ø10-16 polyurethane
Stelo Piston rod	Acciaio inox AISI303 AISI303 Stainless steel
Pressione MIN MIN pressure	2 bar
Pressione MAX MAX pressure	10 bar
Temperatura di impiego Working temperature	Ø6 -20°C +80°C con aria secca Ø10-16 -35°C +80°C con aria secca Ø6 -20°C +80°C with dry air Ø10-16 -35°C +80°C with dry air
Fluido Working fluid	Aria compressa filtrata e lubrificata e non Filtered and lubricated or not compressed air

CHIAVI DI CODIFICA CYLINDERS KEY CODE

Versione Version	Diametro Diameter	Corsa Stroke	Tipo costruttivo Design Type
CCP	32	05	S
CCN	06	05	S Standard Standard
CCP	10	10	V Guarnizioni FKM FKM seals
	16	15	

CORSE STANDARD STANDARD STROKES

Ø (mm)	Corse standard (mm) Standard strokes (mm)		
	5	10	15
6	5	10	15
10	5	10	15
16	5	10	15


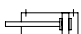


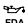
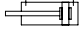
FORZE TEORICHE A 6 BAR THEORETICAL FORCES AT 6 BAR

Ø (mm)	Forza di spinta (N) Thrust force (N)
6	17
10	47
16	121

FORZE TEORICHE DELLE MOLLE THEORETICAL SPRING FORCES

Ø (mm)	Molla anteriore Front spring					
	Corsa Stroke 5		Corsa Stroke 10		Corsa Stroke 15	
	F1(N)	F2(N)	F1(N)	F2(N)	F1(N)	F2(N)
6	1.6	3.7	1.6	3.9	1.6	3.9
10	7.4	11.5	6	12.5	6.8	12.8
16	8.4	9.5	8.4	10.7	7.4	10.7

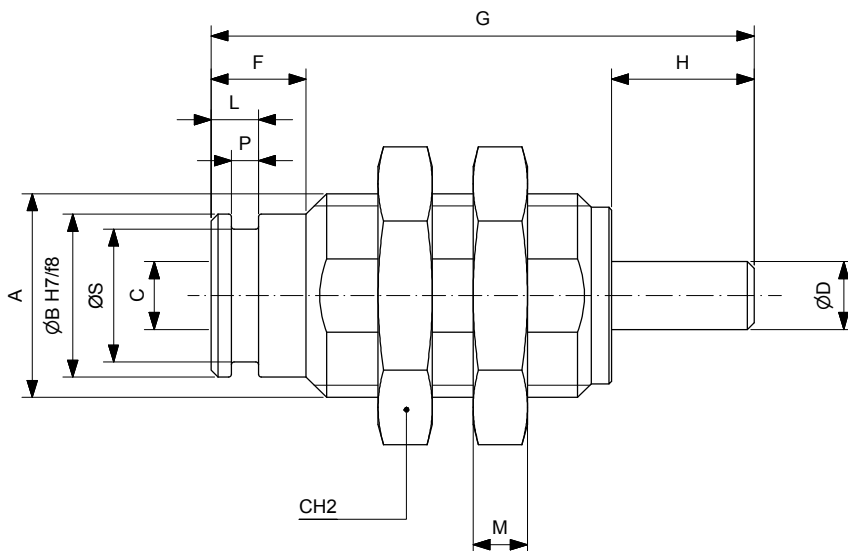
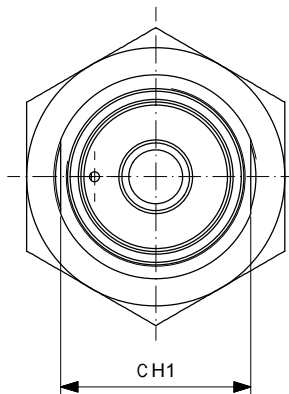
VARIANTI VARIANTS

Simbolo Symbol	Caratteristiche Features
 	Resistente alle alte temperature -10...+150°C Heat-resistant -10...+150°C
 	Resistente alle basse temperature -40...+80°C Low temperature resistant -40...+80°C
 	Lubrificazione FDA FDA lubrication

CILINDRI A CARTUCCIA Ø6-16 CARTRIDGE CYLINDERS Ø6-16

CILINDRO CARTUCCIA CON ASTA NON FILETTATA
CARTRIDGE CYLINDER WITH NOT THREADED PISTON ROD

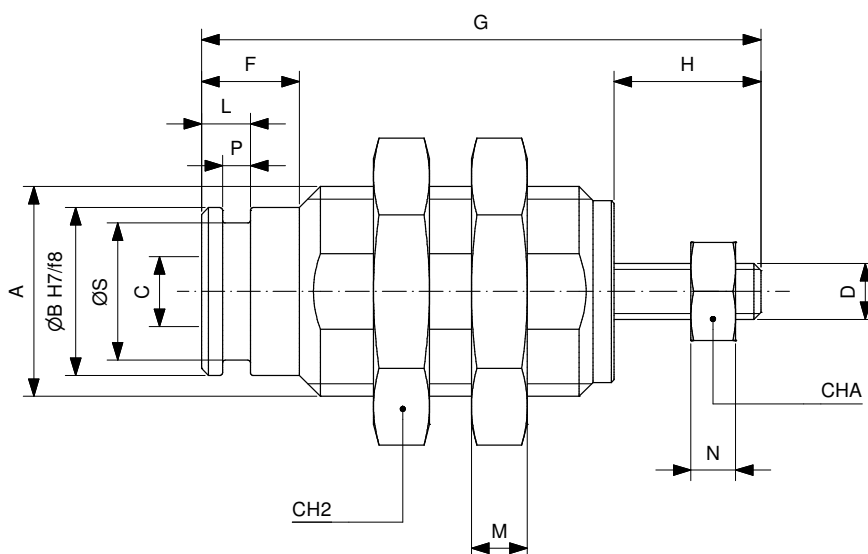
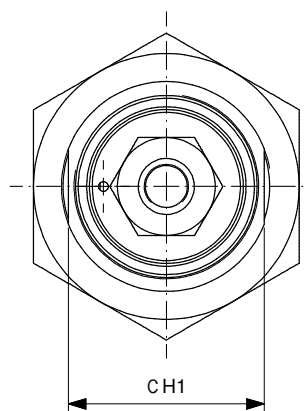
CCNØ/...S



Ø mm	A	ØB H7/f8	ØS	P	L	C	ØD	CH1	F	G(05-10-15)	H	M	CH2
6	M10x1	8.5	7.2	1.2	2.7	M5	3	9	5	27.5-34.5-41.5	8	3	14
10	M15x1.5	12	9.8	2	3.5	M5	5	14	7	33.5-40-47	10.5	4	19
16	M22x1.5	19	16.8	2	4	M5	5	20	6	40-45-50	13	5	27

CILINDRO CARTUCCIA CON ASTA FILETTATA
CARTRIDGE CYLINDER WITH THREADED PISTON ROD

CCPØ/...S



Ø mm	A	ØB H7/f8	ØS	P	L	C	D	CH1	F	G(05-10-15)	H	M	CH2	N	CHA
6	M10x1	8.5	7.2	1.2	2.7	M5	M3	9	5	27.5-34.5-41.5	8	3	14	2.4	5.5
10	M15x1.5	12	9.8	2	3.5	M5	M4	14	7	33.5-40-47	10.5	4	19	3.2	7
16	M22x1.5	19	16.8	2	4	M5	M5	20	6	40-45-50	13	5	27	4	8