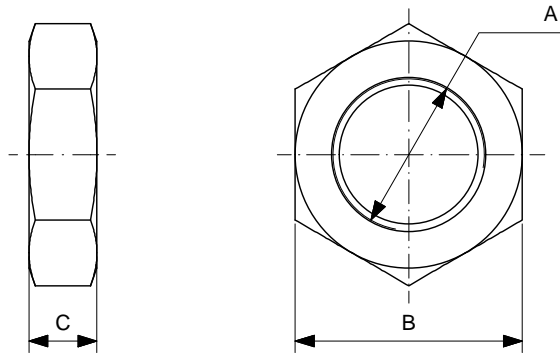


ACCESSORI DI FISSAGGIO MOUNTING ACCESSORIES

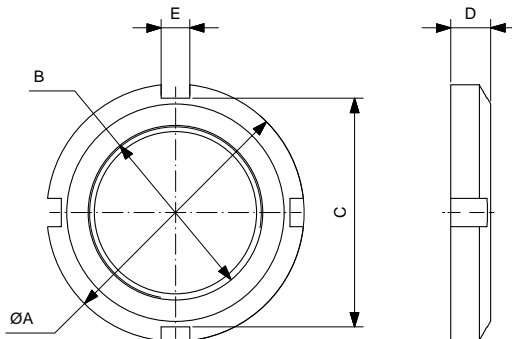
DADI NUT



Materiale Acciaio zincato
Material Zinc coated steel

| CODICE/CODE | A | B | C |
|-------------|----------|----|-----|
| ANA0810 | M4 | 7 | 3.2 |
| ANA1216 | M6 | 10 | 4 |
| ANA20 | M8X1.25 | 13 | 5 |
| ANA25 | M10X1.25 | 17 | 6 |
| ANA32 | M10X1.5 | 17 | 6 |
| ANA40B | M12X1.25 | 19 | 7 |
| ANA40 | M12X1.75 | 19 | 7 |
| ANT1216 | M16X1.5 | 22 | 5 |
| ANA50B | M16X1.5 | 24 | 8 |
| ANA5063 | M16X2 | 24 | 8 |
| ANT25E | M18X1.5 | 24 | 5 |
| ANA80100 | M20X1.5 | 30 | 9 |
| ANT2025 | M22X1.5 | 27 | 8 |
| ANA125X | M27X2 | 41 | 12 |
| ANA160200X | M36X2 | 55 | 14 |
| ANA250X | M42X2 | 65 | 16 |
| ANA320X | M48X2 | 75 | 18 |

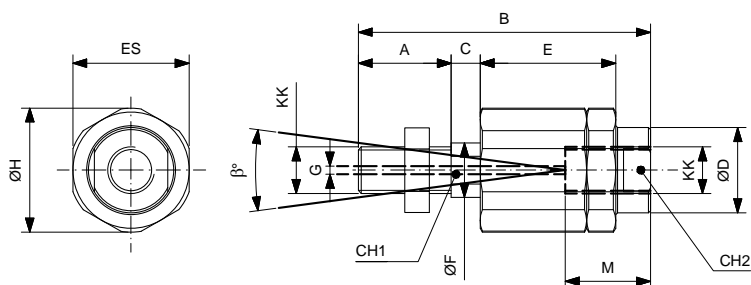
GHIRA SLOTTED NUT



Materiale Acciaio zincato
Material Zinc coated steel

| CODICE/CODE | A | B | C | D | E |
|-------------|----|---------|----|---|---|
| AN32 | 45 | M30x1.5 | 40 | 7 | 5 |
| AN40 | 50 | M38x1.5 | 46 | 8 | 5 |
| AN5063 | 58 | M45x1.5 | 52 | 9 | 6 |

GIUNTO AUTOALLINEANTE SELF-ALIGNING JOINTS

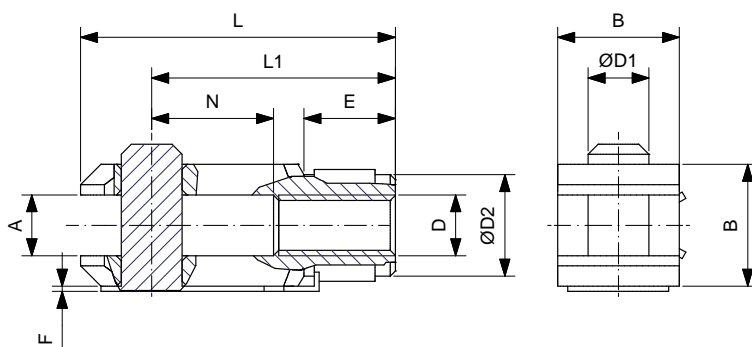


Materiale Corpo acciaio zincato perno brunito
Material Zinc coated steel body pin blanked

Materiale Acciaio zincato
Material Zinc coated steel

| CODICE/CODE | KK | B | A | C | E | ØF | ØD | ØH | ES | G | M | CH1 | CH2 | β° |
|-------------|----------|------|----|------|------|----|------|------|----|---|------|-----|-----|----|
| GASM6x1 | M6X1 | 35 | 10 | 2.5 | 17.5 | 6 | 8.5 | 14.5 | 13 | 1 | 12.5 | 5 | 7 | 6 |
| GASM8x1.25 | M8X1.25 | 57 | 20 | 5 | 26 | 8 | 12.5 | 19 | 17 | 2 | 16 | 7 | 11 | 8 |
| GASM10x1.25 | M10X1.25 | 71.5 | 20 | 7.5 | 35 | 14 | 22 | 32 | 30 | 2 | 22 | 12 | 19 | 8 |
| GASM10x1.50 | M10X1.50 | 71.5 | 20 | 7.5 | 35 | 14 | 22 | 32 | 30 | 2 | 22 | 12 | 19 | 8 |
| GASM12x1.25 | M12X1.25 | 75.5 | 24 | 7.5 | 35 | 14 | 22 | 32 | 30 | 2 | 22 | 12 | 19 | 8 |
| GASM12x1.75 | M12X1.75 | 75.5 | 24 | 7.5 | 35 | 14 | 22 | 32 | 30 | 2 | 22 | 12 | 20 | 9 |
| GASM16x1.50 | M16X1.50 | 104 | 32 | 10 | 53 | 22 | 32 | 45 | 41 | 2 | 30 | 20 | 27 | 6 |
| GASM20x1.50 | M20X1.50 | 119 | 40 | 10 | 53 | 22 | 32 | 45 | 41 | 2 | 37 | 20 | 27 | 6 |
| GASM27x2 | M27X2 | 147 | 54 | 10 | 60 | 32 | 57 | 70 | 65 | 2 | 48 | 24 | 54 | 8 |
| GASM36x2 | M36X2 | 190 | 72 | 15.5 | 77 | 39 | 57 | 75 | 70 | 2 | 68 | 32 | 54 | 8 |

FORCELLA CON CLIP CLEVIS WITH LOCKABLE PIN

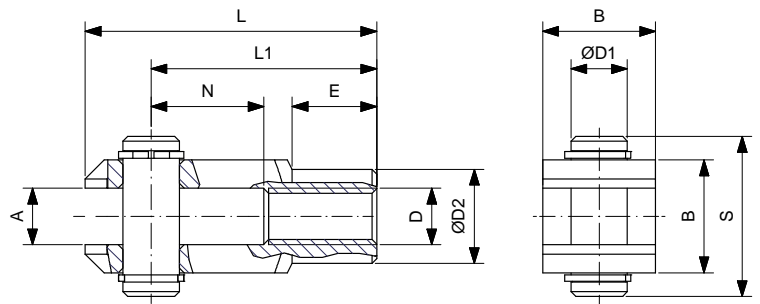


Materiale Acciaio zincato
Material Zinc coated steel

| CODICE/CODE | D | A | F | L1 | N | E | B | D1 | D2 | L |
|-------------|----------|----|-----|----|----|----|----|----|----|-----|
| FORM4ISO | M4 | 4 | 0.5 | 16 | 8 | 6 | 8 | 4 | 8 | 21 |
| FORM6ISO | M6 | 6 | 0.5 | 24 | 12 | 9 | 12 | 6 | 10 | 31 |
| FORM8ISO | M8 | 8 | 0.5 | 32 | 16 | 12 | 16 | 8 | 14 | 42 |
| FORM10ISO | M10X1.25 | 10 | 0.5 | 40 | 20 | 15 | 20 | 10 | 18 | 52 |
| FORM10DIN | M10X1.5 | 10 | 0.5 | 40 | 20 | 15 | 20 | 10 | 18 | 52 |
| FORM12ISO | M12X1.25 | 12 | 0.5 | 48 | 24 | 18 | 24 | 12 | 20 | 62 |
| FORM12DIN | M12X1.75 | 12 | 0.5 | 48 | 24 | 18 | 24 | 12 | 20 | 62 |
| FORM16ISO | M16X1.5 | 16 | 1 | 64 | 32 | 24 | 32 | 16 | 26 | 83 |
| FORM16DIN | M16X2 | 16 | 1 | 64 | 32 | 24 | 32 | 16 | 26 | 83 |
| FORM20ISO | M20X1.5 | 20 | 1 | 80 | 40 | 30 | 40 | 20 | 34 | 105 |

ACCESSORI DI FISSAGGIO MOUNTING ACCESSORIES

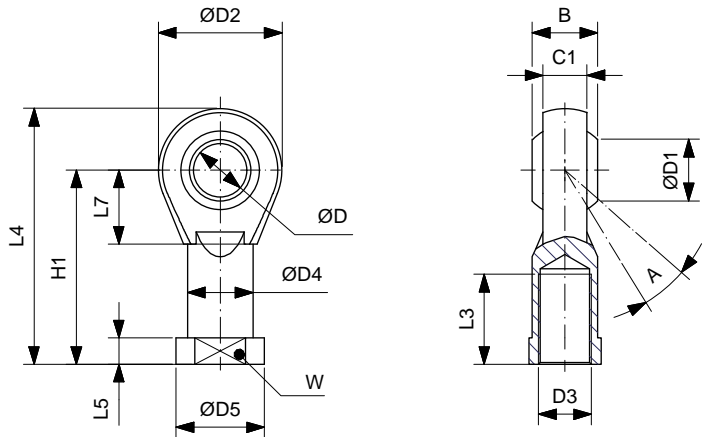
FORCELLA CON PERNO CLEVIS WITH PIVOT



Materiale Acciaio zincato
Material Zinc coated steel

| CODICE/CODE | D | A | B | D1 | S | N | L1 | L | E | D2 |
|-------------|-------|----|----|----|-------|----|-----|-----|------|----|
| FORM27ISO | M27X2 | 30 | 55 | 30 | 65 | 54 | 110 | 148 | 38 | 48 |
| FORM36DIN | M36X2 | 35 | 70 | 35 | 84 | 72 | 144 | 188 | 40 | 60 |
| FORM42DIN | M42X2 | 40 | 85 | 40 | 104.3 | 84 | 168 | 232 | 63.5 | 70 |
| FORM48DIN | M48X2 | 50 | 96 | 50 | 117.3 | 96 | 192 | 265 | 73 | 82 |

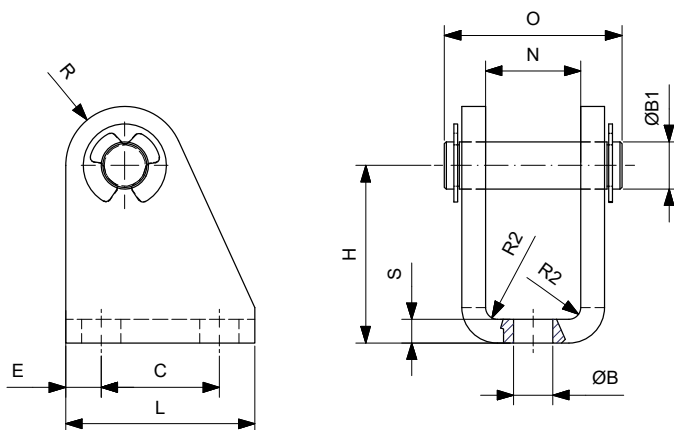
TESTA A SNODO ROD END



Materiale Corpo acciaio zincato boccola in bronzo sinterizzato
Material Zinc coated steel body sintered bronze bush

| CODICE/CODE | D3 | W | L3 | A | ØD | ØD1 | C1 | B | ØD4 | ØD5 | L5 | L7 | H1 | L4 | D2 |
|--------------|----------|----|----|-----|----|------|------|----|------|-----|-----|----|-----|-----|-----|
| TSNDM4X0.7 | M4 | 9 | 10 | 13° | 5 | 7.7 | 6 | 8 | 9 | 11 | 4 | 10 | 27 | 36 | 18 |
| TSNDM6X1 | M6 | 11 | 12 | 13° | 6 | 8.9 | 6.75 | 9 | 10 | 13 | 5 | 11 | 30 | 40 | 20 |
| TSNDM8X1.25 | M8 | 14 | 16 | 14° | 8 | 10.4 | 9 | 12 | 12.5 | 16 | 5 | 13 | 36 | 48 | 24 |
| TSNDM10X1.25 | M10X1.25 | 17 | 20 | 13° | 10 | 12.9 | 10.5 | 14 | 15 | 19 | 6.5 | 15 | 43 | 57 | 28 |
| TSNDM10X1.5 | M10X1.5 | 17 | 20 | 13° | 10 | 12.9 | 10.5 | 14 | 15 | 19 | 6.5 | 15 | 43 | 57 | 28 |
| TSNDM12X1.25 | M12X1.25 | 19 | 22 | 13° | 12 | 15.4 | 12 | 16 | 17.5 | 22 | 6.5 | 17 | 50 | 66 | 32 |
| TSNDM12X1.75 | M12X1.75 | 19 | 22 | 13° | 12 | 15.4 | 12 | 16 | 17.5 | 22 | 6.5 | 17 | 50 | 66 | 32 |
| TSNDM16X1.5 | M16X1.5 | 22 | 28 | 15° | 16 | 19.3 | 15 | 21 | 22 | 27 | 8 | 23 | 64 | 85 | 42 |
| TSNDM16X2 | M16X2 | 22 | 28 | 15° | 16 | 19.3 | 15 | 21 | 22 | 27 | 8 | 23 | 64 | 85 | 42 |
| TSNDM20X1.5 | M20X1.5 | 30 | 33 | 14° | 20 | 24.3 | 18 | 25 | 27.5 | 34 | 10 | 27 | 77 | 102 | 50 |
| TSNDM27X2 | M27X2 | 41 | 51 | 17° | 30 | 34.8 | 25 | 37 | 40 | 50 | 15 | 36 | 110 | 145 | 70 |
| TSNDM36X2 | M36X2 | 50 | 56 | 19° | 35 | 37.7 | 28 | 43 | 46 | 58 | 17 | 41 | 125 | 165 | 80 |
| TSNDM42X2 | M42X2 | 55 | 60 | 16° | 40 | 45.1 | 33 | 49 | 53 | 65 | 19 | 45 | 142 | 187 | 91 |
| TSNDM48X2 | M48X2 | 65 | 65 | 14° | 50 | 56.6 | 45 | 60 | 65 | 75 | 23 | 58 | 162 | 218 | 117 |

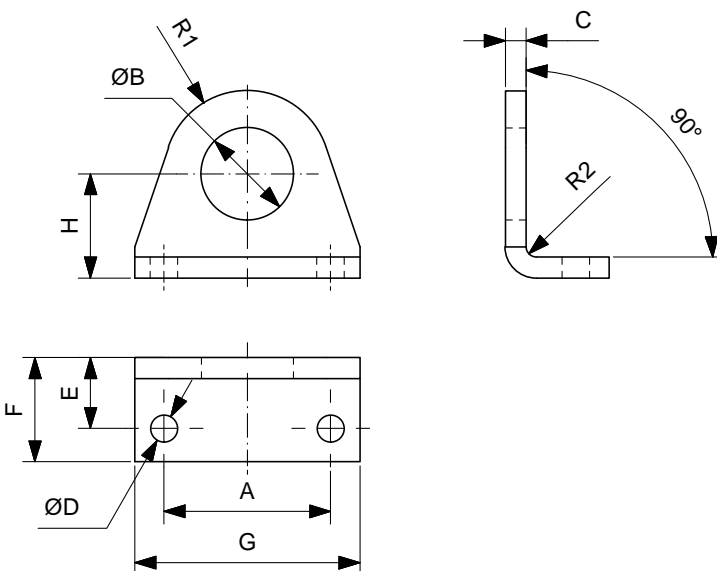
CERNIERA (MP3)
HINGE (MP3)



Materiale Acciaio zincato
Material Zinc coated steel

| CODICE/CODE | Ømm | L | H | B1 | S | E | C | N | B | O | R | R2 |
|-------------|-------|----|----|----|-----|------|------|------|-----|----|----|-----|
| COM0810S | 08-10 | 22 | 24 | 4 | 2.5 | 4.75 | 12.5 | 8.1 | 4.5 | 18 | 5 | 1.5 |
| COM1216S | 12-16 | 25 | 27 | 6 | 3 | 5 | 15 | 12.1 | 5.5 | 24 | 7 | 1.5 |
| COM2025S | 20-25 | 32 | 30 | 8 | 4 | 6 | 20 | 16.1 | 6.6 | 31 | 10 | 2 |

PIEDINO (MS3)
FOOT (MS3)

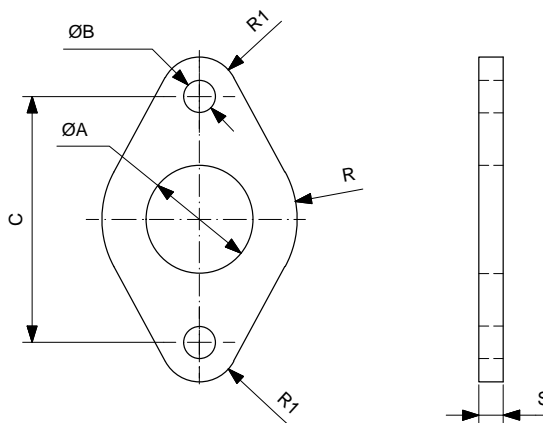
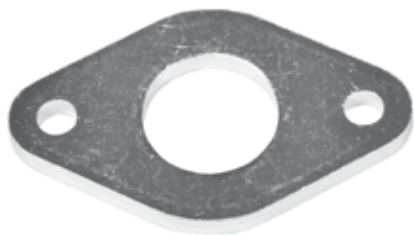


Materiale Acciaio zincato
Material Zinc coated steel

| CODICE/CODE | Ø mm | A | ØB | C | ØD | E | F | G | H | R1 | R2 |
|-------------|-------|----|------|---|-----|----|----|----|----|----|-----|
| APM0810S | 08-10 | 25 | 12 | 3 | 4.5 | 11 | 16 | 35 | 16 | 10 | 1.5 |
| APM1216S | 12-16 | 32 | 16.1 | 4 | 5.5 | 14 | 20 | 42 | 20 | 13 | 2 |
| APM2025S | 20-25 | 40 | 22.1 | 5 | 6.6 | 17 | 25 | 54 | 25 | 20 | 2.5 |

ACCESSORI DI FISSAGGIO MOUNTING ACCESSORIES

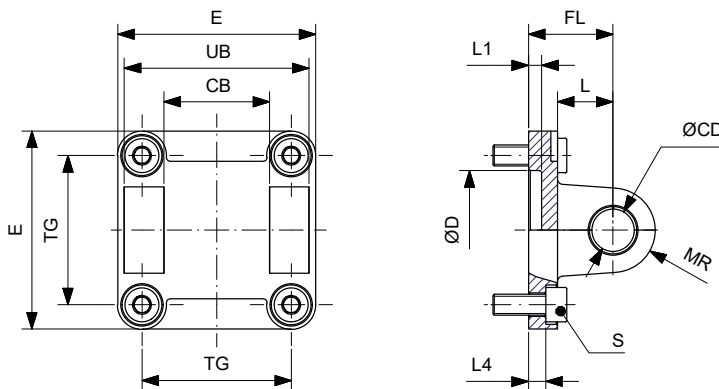
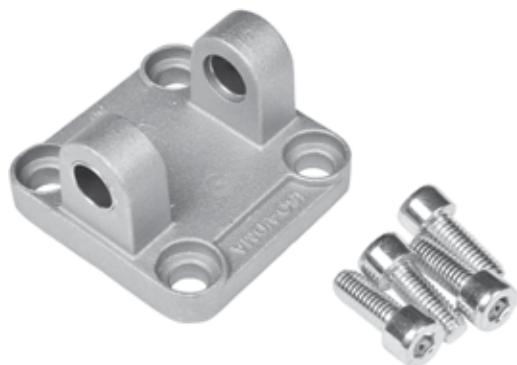
FLANGIA (MF8) FLANGE (MF8)



Materiale Acciaio zincato
Material Zinc coated steel

| CODICE/CODE | Ø mm | ØA | ØB | C | R | R1 | S |
|-------------|-------|----|-----|----|----|----|---|
| AFM0810S | 08-10 | 12 | 4.5 | 30 | 11 | 5 | 3 |
| AFM1216S | 12-16 | 16 | 5.5 | 40 | 15 | 6 | 4 |
| AFM2025S | 20-25 | 22 | 6.5 | 50 | 20 | 8 | 5 |

CERNIERA FEMMINA (MP2) FEMALE HINGE (MP2)



Materiale Corpo in alluminio pressofuso bussole in acciaio e PTFE
Material Die casted aluminium body steel and PTFE bush

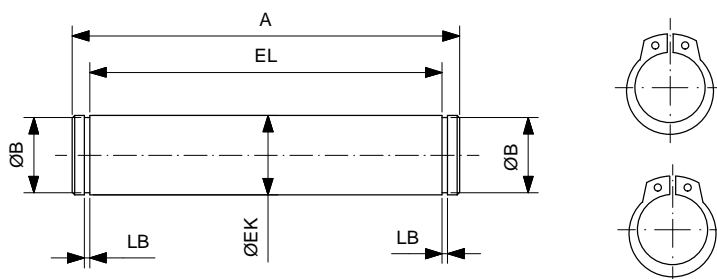
| CODICE/CODE | Ø mm | TG | CB | UB | ØCD | FL | L | ØD | L1 | L4 | S | MR | E |
|-------------|------|------|-----|-----|-----|----|----|-----|----|-----|--------|----|-----|
| CRF32A | 32 | 32.5 | 26 | 45 | 10 | 22 | 13 | 30 | 5 | 5.5 | M6X20 | 10 | 45 |
| CRF40A | 40 | 38 | 28 | 52 | 12 | 25 | 16 | 35 | 5 | 5.5 | M6X20 | 12 | 52 |
| CRF50A | 50 | 46.5 | 32 | 60 | 12 | 27 | 16 | 40 | 5 | 6.5 | M8X20 | 12 | 65 |
| CRF63A | 63 | 56.5 | 40 | 70 | 16 | 32 | 21 | 45 | 5 | 6.5 | M8X20 | 16 | 75 |
| CRF80A | 80 | 72 | 50 | 90 | 16 | 36 | 22 | 45 | 5 | 10 | M10X25 | 16 | 95 |
| CRF100A | 100 | 89 | 60 | 110 | 20 | 41 | 27 | 55 | 5 | 10 | M10X25 | 20 | 115 |
| CRF125A | 125 | 110 | 70 | 130 | 25 | 50 | 30 | 60 | 7 | 10 | M12X25 | 25 | 140 |
| CRF160A | 160 | 140 | 90 | 170 | 30 | 55 | 35 | 65 | 7 | 10 | M16X30 | 25 | 180 |
| CRF200A | 200 | 175 | 90 | 170 | 30 | 60 | 35 | 75 | 7 | 11 | M16X30 | 25 | 220 |
| CRF250A* | 250 | 220 | 110 | 200 | 40 | 70 | 45 | 90 | - | 11 | M20X35 | 40 | 270 |
| CRF320A* | 320 | 270 | 120 | 220 | 45 | 80 | 50 | 110 | - | 15 | M24X40 | 45 | 350 |

Nota: fornito completo di 4 viti DIN 912 - *Ø250 Ø320 senza bussole, foro ØD aperto. Ø250 disponibile in acciaio ad esaurimento.

Note: supplied with 4 screws DIN 912 - *Ø250 Ø320 without bushes, ØD hole is open. Ø250 available in steel until stock are exhausted.

| | | | | | | |
|--|----|------------------------------|----|-------------------------|----|---|
| Condizioni di fornitura Supply conditions | 00 | Senza viti Without screws | 01 | Con viti With screws | 02 | Con perno e viti With pin and screws |
|--|----|------------------------------|----|-------------------------|----|---|

PERNO PER CERNIERA FEMMINA (AA4) PIVOT FOR FEMALE HINGE (AA4)

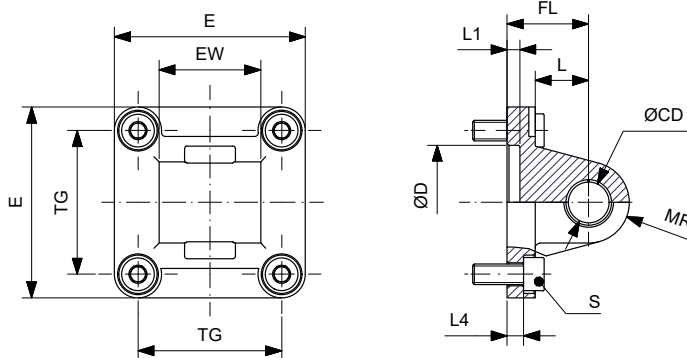


Materiale Acciaio zincato
Material Zinc coated steel

| CODICE/CODE | Ø mm | ØEK | EL | ØB | LB | A |
|-------------|---------|-----|-----|------|------|-----|
| PRC32S | 32 | 10 | 46 | 9.6 | 1.1 | 53 |
| PRC40S | 40 | 12 | 53 | 11.5 | 1.1 | 60 |
| PRC50S | 50 | 12 | 61 | 11.5 | 1.1 | 68 |
| PRC63S | 63 | 16 | 71 | 15.2 | 1.1 | 78 |
| PRC80S | 80 | 16 | 91 | 15.2 | 1.1 | 98 |
| PRC100S | 100 | 20 | 111 | 19 | 1.3 | 118 |
| PRC125S | 125 | 25 | 132 | 23.9 | 1.3 | 139 |
| PRC160200S | 160-200 | 30 | 172 | 28.6 | 1.6 | 180 |
| PRC250S | 250 | 40 | 202 | 37.5 | 1.85 | 214 |
| PRC320S | 320 | 45 | 222 | 42.5 | 1.85 | 234 |

Nota: fornito completo seeger. Note: supplied with retaining rings.

CERNIERA MASCHIO (MP4) MALE HINGE (MP4)



Materiale Corpo in alluminio pressofuso bussole in acciaio e PTFE
Material Die casted aluminium body steel and PTFE bush

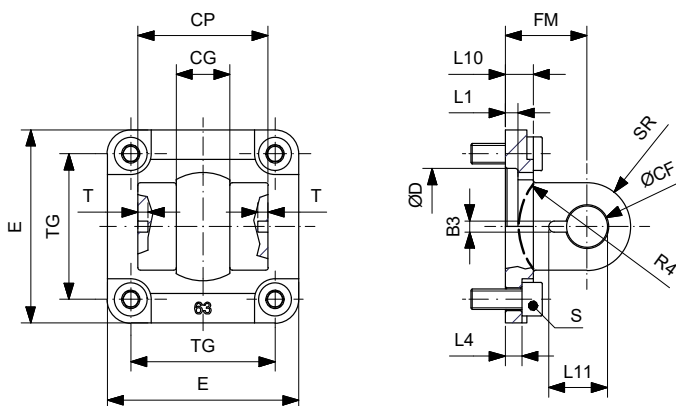
| CODICE/CODE | Ø mm | TG | EW | ØCD | FL | L | ØD | L1 | L4 | S | MR | E |
|-------------|------|------|-----|-----|----|----|-----|-----|-----|--------|----|------|
| CRM20A* | 20 | 22 | 16 | 8 | 20 | 12 | 12 | 4,5 | 3 | M5X16 | 8 | 36 |
| CRM25A* | 25 | 26 | 16 | 8 | 20 | 12 | 12 | 4,5 | 3 | M5X16 | 8 | 39,5 |
| CRM32A | 32 | 32.5 | 26 | 10 | 22 | 13 | 30 | 5 | 5.5 | M6X20 | 10 | 45 |
| CRM40A | 40 | 38 | 28 | 12 | 25 | 16 | 35 | 5 | 5.5 | M6X20 | 12 | 52 |
| CRM50A | 50 | 46.5 | 32 | 12 | 27 | 16 | 40 | 5 | 6.5 | M8X20 | 12 | 65 |
| CRM63A | 63 | 56.5 | 40 | 16 | 32 | 21 | 45 | 5 | 6.5 | M8X20 | 16 | 75 |
| CRM80A | 80 | 72 | 50 | 16 | 36 | 22 | 45 | 5 | 10 | M10X25 | 16 | 95 |
| CRM100A | 100 | 89 | 60 | 20 | 41 | 27 | 55 | 5 | 10 | M10X25 | 20 | 115 |
| CRM125A | 125 | 110 | 70 | 25 | 50 | 30 | 60 | 7 | 10 | M12X25 | 25 | 140 |
| CRM160A | 160 | 140 | 90 | 30 | 55 | 35 | 65 | 7 | 10 | M16X30 | 25 | 180 |
| CRM200A | 200 | 175 | 90 | 30 | 60 | 35 | 75 | 7 | 11 | M16X30 | 25 | 220 |
| CRM250A** | 250 | 220 | 110 | 40 | 70 | 45 | 90 | 11 | 11 | M20X35 | 40 | 270 |
| CRM320A** | 320 | 270 | 120 | 45 | 80 | 50 | 110 | 15 | 15 | M24X40 | 45 | 350 |

Nota: fornito completo di 4 viti DIN 912 - *Ø20-25 da ISO 21287; **Ø250-320 senza bussole, foro ØD aperto. Ø320 disponibile in acciaio ad esaurimento.
Note: supplied with 4 screws DIN 912 - *Ø20-25 according to ISO 21287; **Ø250-320 without bushes, ØD hole is open. Ø320 available in steel until stock are exhausted.

Condizioni di fornitura Supply conditions 00 Senza viti Without screws 01 Con viti With screws

ACCESSORI DI FISSAGGIO MOUNTING ACCESSORIES

CERNIERA FEMMINA STRETTA PER SNODO SFERICO (AB6) CLEVIS BRACKET, SPHERICAL EYE, STRAIGHT (AB6)

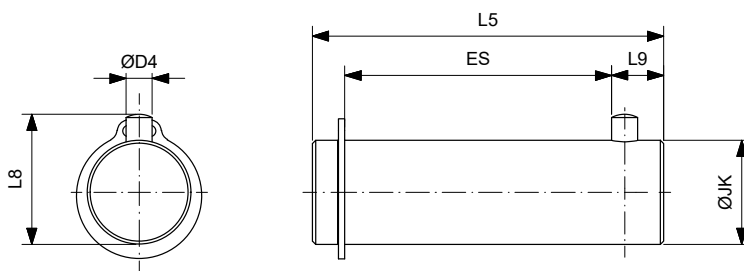


Materiale Corpo in alluminio pressofuso
Material Die casted aluminium body

| CODICE/CODE | Ø mm | E | CP | CG | TG | FM | L1 | L10 | L4 | ØD | ØCF | T | B3 | L11 | SR | R4 | S |
|-------------|------|-----|----|----|------|----|----|-----|-----|----|-----|---|-----|------|-----|----|--------|
| CFS32A | 32 | 45 | 34 | 14 | 32.5 | 22 | 5 | 9 | 5.5 | 30 | 10 | 3 | 3.3 | 16.5 | 9.5 | 17 | M6X20 |
| CFS40A | 40 | 52 | 40 | 16 | 38 | 25 | 5 | 9 | 5.5 | 35 | 12 | 4 | 4.3 | 18 | 12 | 20 | M6X20 |
| CFS50A | 50 | 65 | 45 | 21 | 46.5 | 27 | 5 | 11 | 6.5 | 40 | 16 | 4 | 4.3 | 23 | 14 | 22 | M8X20 |
| CFS63A | 63 | 75 | 51 | 21 | 56.5 | 32 | 5 | 11 | 6.5 | 45 | 16 | 4 | 4.3 | 23 | 17 | 25 | M8X20 |
| CFS80A | 80 | 95 | 65 | 25 | 72 | 36 | 5 | 14 | 10 | 45 | 20 | 4 | 4.3 | 27 | 21 | 30 | M10X25 |
| CFS100A | 100 | 115 | 75 | 25 | 89 | 41 | 5 | 14 | 10 | 55 | 20 | 4 | 4.3 | 27 | 21 | 32 | M10X25 |
| CFS125A | 125 | 140 | 97 | 37 | 110 | 50 | 7 | 20 | 10 | 60 | 30 | 6 | 6.3 | 40 | 29 | 42 | M12X25 |

Condizioni di fornitura Supply conditions 00 Senza viti Without screws 01 Con viti With screws 02 Con perno e viti With pin and screws

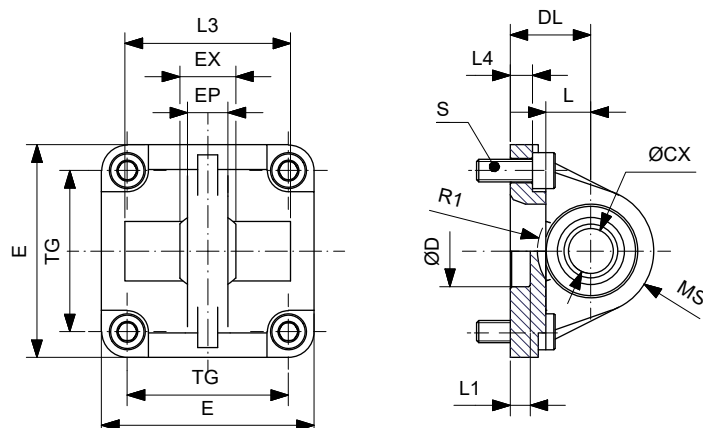
PERNO PER CERNIERA SNODATA (AA6) PIVOT PIN, SPHERICAL BEARING (AA6)



Materiale Acciaio zincato
Material Zinc coated steel

| CODICE/CODE | Ø mm | ØD4 | L8 | ØJK | L5 | L9 | ES |
|-------------|------|-----|----|-----|-----|-----|------|
| PRS32S | 32 | 3 | 14 | 10 | 41 | 6.5 | 30.5 |
| PRS40S | 40 | 4 | 16 | 12 | 48 | 8 | 36 |
| PRS50S | 50 | 4 | 20 | 16 | 54 | 8 | 41 |
| PRS63S | 63 | 4 | 20 | 16 | 60 | 8 | 47 |
| PRS80S | 80 | 4 | 24 | 20 | 75 | 8 | 61 |
| PRS100S | 100 | 4 | 24 | 20 | 85 | 8 | 71 |
| PRS125S | 125 | 6 | 36 | 30 | 110 | 12 | 91 |

CERNIERA MASCHIO SNODATA (MP6) MALE HINGE WITH SPHERICAL BEARING (MP6)



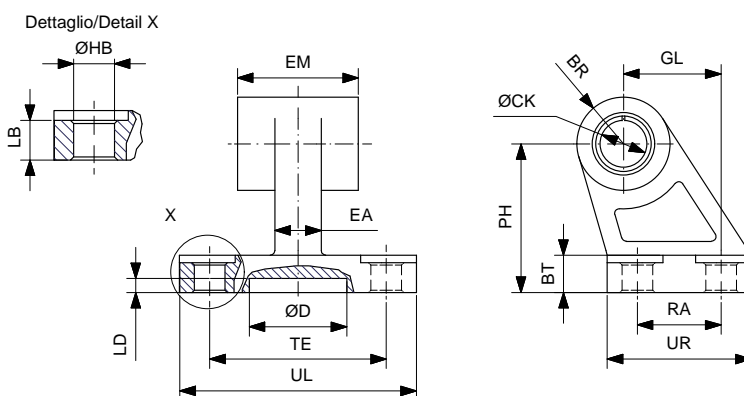
Corpo in alluminio pressofuso
 Materiale Snodo sferico in acciaio e bronzo
 Material Die casted aluminium body
 Steel and bronze spherical bearing

| CODICE/ CODE | Ø mm | TG | ØCX | DL | L | EX | EP | S | L4 | D | L1 | E | MS | L3 | R1 |
|--------------|------|------|-----|----|----|----|------|--------|-----|----|----|-----|----|------|----|
| CMT32A | 32 | 32.5 | 10 | 22 | 12 | 14 | 10.5 | M6x20 | 5.5 | 30 | 7 | 45 | 16 | - | - |
| CMT40A | 40 | 38 | 12 | 25 | 15 | 16 | 12 | M6x20 | 5.5 | 35 | 7 | 52 | 18 | - | - |
| CMT50A | 50 | 46.5 | 16 | 27 | 15 | 21 | 15 | M8x20 | 6.5 | 40 | 7 | 65 | 21 | 51 | 19 |
| CMT63A | 63 | 56.5 | 16 | 32 | 20 | 21 | 15 | M8x20 | 6.5 | 45 | 7 | 75 | 23 | - | - |
| CMT80A | 80 | 72 | 20 | 36 | 20 | 25 | 18 | M10x25 | 10 | 45 | 9 | 95 | 28 | 74 | 24 |
| CMT100A | 100 | 89 | 20 | 41 | 25 | 25 | 18 | M10x25 | 10 | 55 | 9 | 115 | 30 | -140 | 32 |
| CMT125A | 125 | 110 | 30 | 50 | 30 | 37 | 25 | M12x25 | 10 | 60 | 9 | 140 | 40 | - | - |
| CMT160A | 160 | 140 | 35 | 55 | 35 | 43 | 30 | M16x30 | 10 | 65 | 7 | 180 | 44 | - | - |
| CMT200A | 200 | 175 | 35 | 60 | 35 | 43 | 30 | M16x30 | 11 | 75 | 7 | 220 | 47 | 220 | 48 |

Nota: fornito completo di 4 viti DIN 912. Note: supplied with 4 screws DIN 912.

| Condizioni di fornitura Supply conditions | 00 | Senza viti Without screws | 01 | Con viti With screws |
|--|----|------------------------------|----|-------------------------|
|--|----|------------------------------|----|-------------------------|

ARTICOLAZIONE A SQUADRA (AB7) SQUARE JOINT (AB7)

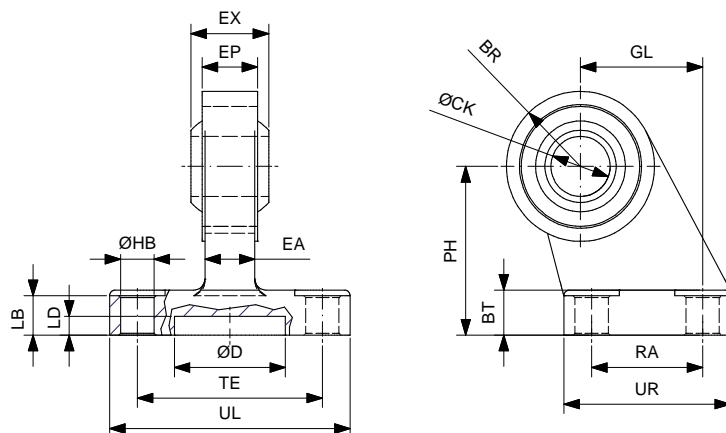


Materiale Corpo in alluminio pressofuso
 Material Die casted aluminium body

| CODICE/ CODE | Ømm | ØCK | EM | BR | PH | GL | ØHB | LB | BT | TE | RA | ØD | LD | UL | UR | EA |
|--------------|-----|-----|----|------|-----|-----|-----|------|----|-----|----|----|----|-----|-----|----|
| ART32A | 32 | 10 | 26 | 10 | 32 | 21 | 6.6 | 6.4 | 8 | 38 | 18 | 21 | 3 | 51 | 31 | 10 |
| ART40A | 40 | 12 | 28 | 11 | 36 | 24 | 6.6 | 8.4 | 10 | 41 | 22 | 21 | 3 | 54 | 35 | 15 |
| ART50A | 50 | 12 | 32 | 13 | 45 | 33 | 9 | 10.4 | 12 | 50 | 30 | 21 | 3 | 65 | 45 | 16 |
| ART63A | 63 | 16 | 40 | 15 | 50 | 37 | 9 | 12.4 | 14 | 52 | 35 | 21 | 3 | 67 | 50 | 16 |
| ART80A | 80 | 16 | 50 | 15 | 63 | 47 | 11 | 11.5 | 14 | 66 | 40 | 21 | 3 | 86 | 60 | 20 |
| ART100A | 100 | 20 | 60 | 19 | 71 | 55 | 11 | 14.5 | 17 | 76 | 50 | 11 | 3 | 96 | 70 | 20 |
| ART125A | 125 | 25 | 70 | 22.5 | 90 | 70 | 14 | 16.8 | 20 | 94 | 60 | 21 | 3 | 124 | 90 | 30 |
| ART160A | 160 | 30 | 90 | 31.5 | 115 | 97 | 14 | 21 | 25 | 118 | 88 | 31 | 5 | 156 | 126 | 36 |
| ART200A | 200 | 30 | 90 | 31.5 | 135 | 105 | 18 | 26 | 30 | 122 | 90 | 31 | 5 | 162 | 130 | 40 |

ACCESSORI DI FISSAGGIO MOUNTING ACCESSORIES

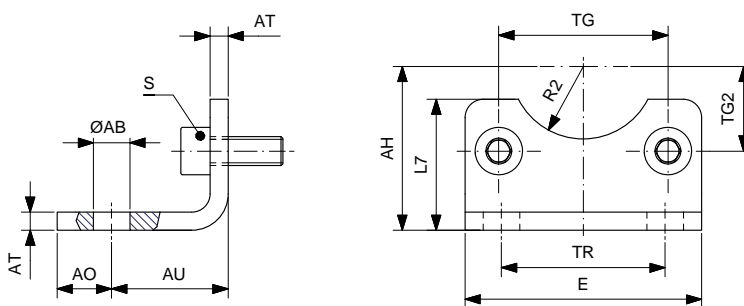
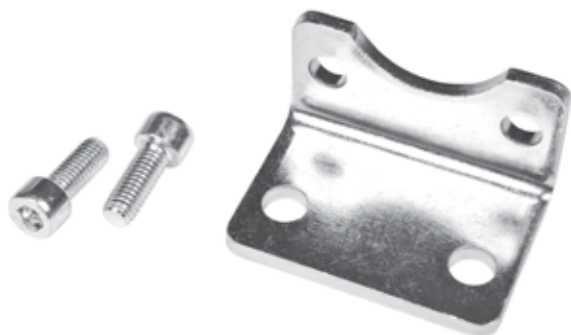
ARTICOLAZIONE A SQUADRA CON TESTINA SNODATA DIN 648 K SQUARE JOINT WITH SPHERICAL HEAD DIN 648 K



Materiale Acciaio verniciato
Material Painted steel

| CODICE/ PART NUM | Ø mm | ØHB | RA | UR | GL | BT | PH | TE | UL | BR | EP | ØCK | LB | ØD | LD | EA | EX |
|------------------|------|------|----|----|----|----|----|----|-----|----|------|-----|------|----|----|------|----|
| ARS32S | 32 | 6.6 | 18 | 31 | 21 | 10 | 32 | 38 | 51 | 15 | 10.5 | 10 | 8.5 | 20 | 5 | 8.5 | 14 |
| ARS40S | 40 | 6.6 | 22 | 35 | 24 | 10 | 36 | 41 | 54 | 18 | 12 | 12 | 8.5 | 25 | 5 | 10 | 16 |
| ARS50S | 50 | 9 | 30 | 45 | 33 | 12 | 45 | 50 | 65 | 20 | 15 | 16 | 10.5 | 30 | 5 | 13.5 | 21 |
| ARS63S | 63 | 9 | 35 | 50 | 37 | 12 | 50 | 52 | 67 | 23 | 15 | 16 | 10.5 | 35 | 5 | 13.5 | 21 |
| ARS80S | 80 | 11 | 40 | 60 | 47 | 14 | 63 | 66 | 86 | 27 | 18 | 20 | 11.5 | 45 | 5 | 15 | 25 |
| ARS100S | 100 | 11 | 50 | 70 | 55 | 15 | 71 | 76 | 96 | 30 | 18 | 20 | 12.5 | 55 | 5 | 15 | 25 |
| ARS125S | 125 | 13.5 | 60 | 90 | 70 | 20 | 90 | 94 | 124 | 40 | 25 | 30 | 17 | 65 | 7 | 20 | 37 |

PIEDINO BASSO (MS1) LOW-RISE PEDESTAL (MS1)



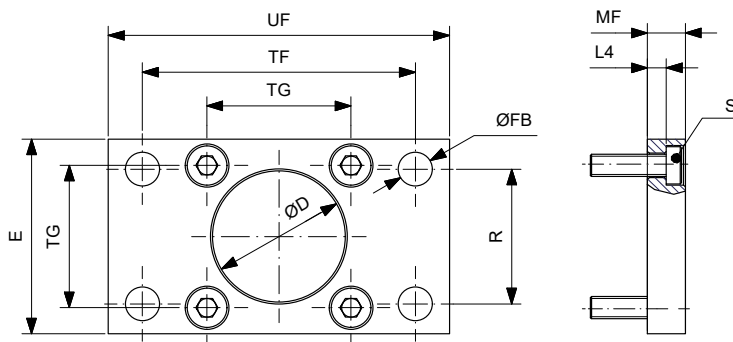
Materiale Acciaio zincato
Material Zinc coated steel

| CODICE/ CODE | Ø mm | TG | TG2 | AH | R2 | ØAB | AO | AU | TR | AT | S | L7 | E |
|--------------|------|------|-------|-----|------|------|----|----|-----|----|--------|-----|-----|
| AFD32S | 32 | 32.5 | 16.25 | 32 | 15 | 7 | 11 | 24 | 32 | 4 | M6X16 | 30 | 45 |
| AFD40S | 40 | 38 | 19 | 36 | 17.5 | 10 | 8 | 28 | 36 | 4 | M6X16 | 30 | 52 |
| AFD50S | 50 | 46.5 | 23.25 | 45 | 20 | 10 | 15 | 32 | 45 | 5 | M8X20 | 36 | 65 |
| AFD63S | 63 | 56.5 | 28.25 | 50 | 22.5 | 10 | 13 | 32 | 50 | 5 | M8X20 | 35 | 75 |
| AFD80S | 80 | 72 | 36 | 63 | 22.5 | 12 | 14 | 41 | 63 | 6 | M10X20 | 47 | 95 |
| AFD100S | 100 | 89 | 44.5 | 71 | 27.5 | 14.5 | 16 | 41 | 75 | 6 | M10X20 | 53 | 115 |
| AFD125S | 125 | 110 | 55 | 90 | 30 | 16.5 | 25 | 45 | 90 | 8 | M12X25 | 70 | 140 |
| AFD160S | 160 | 140 | 70 | 115 | 32.5 | 18.5 | 15 | 60 | 115 | 10 | M16X30 | 100 | 180 |
| AFD200S | 200 | 175 | 87.5 | 135 | 37.5 | 24 | 30 | 70 | 135 | 12 | M16X30 | 109 | 220 |

Nota: fornito completo di 2 viti DIN 912. Note: supplied with 2 DIN 912 screw.

| | | | | |
|--|----|------------------------------|----|-------------------------|
| Condizioni di fornitura Supply conditions | 00 | Senza viti Without screws | 01 | Con viti With screws |
|--|----|------------------------------|----|-------------------------|

FLANGIA (MF1-MF2) FLANGE (MF1-MF2)



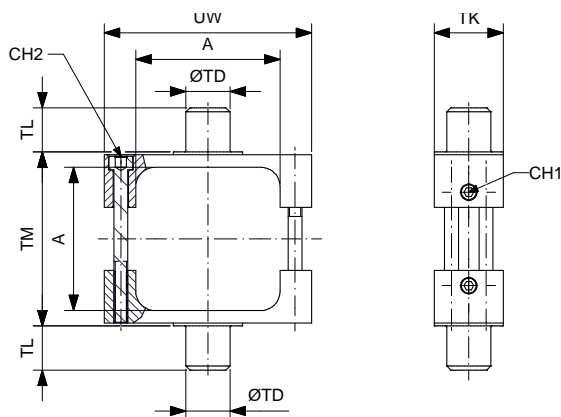
Materiale Acciaio zincato
Material Zinc coated steel

| CODICE/CODE | Ø mm | TG | ØD | ØFB | R | TF | L4 | S | UF | E | MF |
|-------------|------|------|----|-----|-----|-----|------|--------|-----|-----|----|
| AFP32S | 32 | 32.5 | 30 | 7 | 32 | 64 | 5 | M6x20 | 80 | 45 | 10 |
| AFP40S | 40 | 38 | 35 | 9 | 36 | 72 | 5 | M6x20 | 90 | 52 | 10 |
| AFP50S | 50 | 46.5 | 40 | 9 | 45 | 90 | 6.5 | M8x20 | 110 | 65 | 12 |
| AFP63S | 63 | 56.5 | 45 | 9 | 50 | 100 | 6.5 | M8x20 | 120 | 75 | 12 |
| AFP80S | 80 | 72 | 45 | 12 | 63 | 126 | 9 | M10x25 | 150 | 95 | 16 |
| AFP100S | 100 | 89 | 55 | 14 | 75 | 150 | 9 | M10x25 | 170 | 115 | 16 |
| AFP125S | 125 | 110 | 60 | 16 | 90 | 180 | 10.5 | M12x25 | 205 | 140 | 20 |
| AFP160S | 160 | 140 | 65 | 18 | 115 | 230 | 9.5 | M16x30 | 260 | 180 | 20 |
| AFP200S | 200 | 175 | 75 | 22 | 135 | 270 | 12.5 | M16x30 | 300 | 220 | 25 |

Nota: fornito completo di 4 viti DIN 7984. Note: supplied with 4 screws DIN 7984.

Condizioni di fornitura Supply conditions 00 Senza viti Without screws 01 Con viti With screws

CERNIERA INTERMEDIA PER CILINDRI PROFILATI (MT4) INTERMEDIATE HINGE FOR PROFILE CYLINDER (MT4)

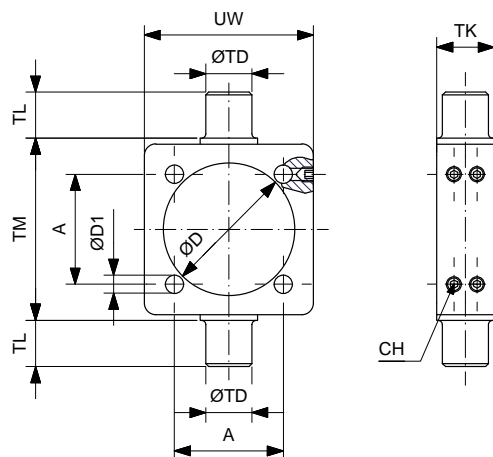


Materiale Acciaio zincato
Material Zinc coated steel

| CODICE/CODE | Ø mm | A | TM | TL | TK | ØTD | UW | CH1 | CH2 |
|-------------|------|-------|-----|------|----|-----|-----|-----|-----|
| CIP32S | 32 | 45 | 50 | 11.5 | 25 | 12 | 65 | 3 | 3 |
| CIP40S | 40 | 51.8 | 63 | 16 | 25 | 16 | 75 | 3 | 4 |
| CIP50S | 50 | 60.7 | 75 | 16 | 30 | 16 | 95 | 3 | 5 |
| CIP63S | 63 | 72.2 | 90 | 20 | 30 | 20 | 105 | 3 | 5 |
| CIP80S | 80 | 91.2 | 110 | 20 | 30 | 20 | 130 | 3 | 5 |
| CIP100S | 100 | 108.2 | 132 | 24.5 | 40 | 25 | 145 | 4 | 6 |
| CIP125S | 125 | 135.3 | 160 | 24.5 | 40 | 25 | 176 | 4 | 6 |

ACCESSORI DI FISSAGGIO MOUNTING ACCESSORIES

CERNIERA INTERMEDIA PER CILINDRI TIRANTATI (MT4) INTERMEDIATE HINGE FOR TIE RODS CYLINDERS (MT4)



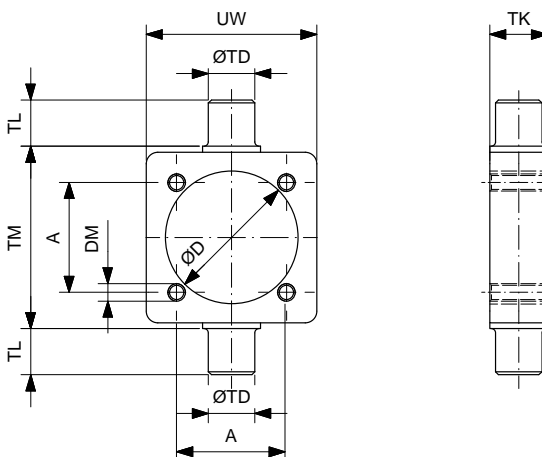
Materiale Acciaio zincato
Material Zinc coated steel

| CODICE/CODE | Ø mm | A | TM | TL | TK | ØTD | ØD | ØD1 | UW | CH | DADO/NUT* |
|-------------|------|------|-----|----|----|-----|-----|-------|-----|-----|-----------|
| CIT32S | 32 | 32.5 | 50 | 12 | 15 | 12 | 37 | 6.25 | 46 | 2.5 | - |
| CIT40S | 40 | 38 | 63 | 16 | 20 | 16 | 46 | 6.25 | 59 | 2.5 | - |
| CIT50S | 50 | 46.5 | 75 | 16 | 20 | 16 | 56 | 8.25 | 69 | 3 | - |
| CIT63S | 63 | 56.5 | 90 | 20 | 25 | 20 | 69 | 8.25 | 84 | 3 | - |
| CIT80S | 80 | 72 | 110 | 20 | 25 | 20 | 87 | 10.25 | 102 | 4 | - |
| CIT100S | 100 | 89 | 132 | 25 | 30 | 25 | 107 | 10.25 | 125 | 4 | - |
| CIT125S | 125 | 110 | 160 | 25 | 32 | 25 | 134 | 12.25 | 155 | 5 | - |
| CIT160S | 160 | 140 | 200 | 32 | 40 | 32 | 171 | 16.25 | 190 | - | M16X2 |
| CIT200S | 200 | 175 | 250 | 32 | 40 | 32 | 214 | 16.25 | 240 | - | M16X2 |

Nota: l'utilizzo della cerniera sui cilindri Ø160-200 è consentito solo in abbinamento a cilindri con tiranti interamente filettati. L'accessorio viene fornito provvisto di appositi dadi per il posizionamento e fissaggio (*)

Note: it is possible to use the Ø160-200 intermediate hinge only combined with cylinders equipped with threaded tie rods. The accessory is supplied with nuts for positioning and fixing (*)

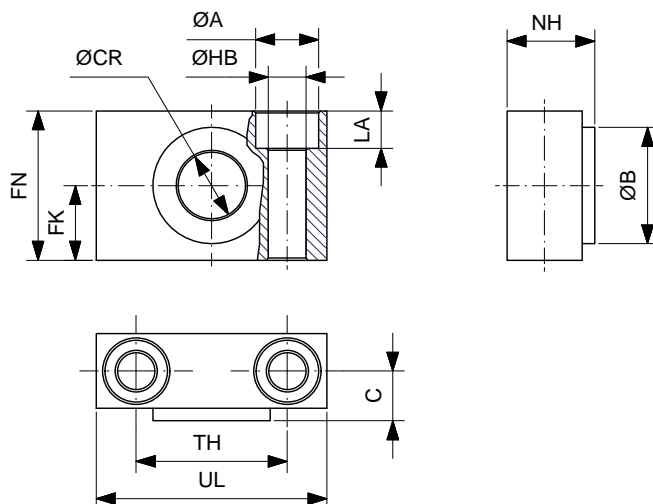
CERNIERA INTERMEDIA FILETTATA PER CILINDRI TIRANTATI (MT4) INTERMEDIATE HINGE THREADED FOR TIE RODS CYLINDERS (MT4)



Materiale Acciaio zincato
Material Zinc coated steel

| CODICE/CODE | Ø mm | A | TM | TL | TK | ØTD | ØD | ØD1 | UW | CH |
|-------------|------|------|-----|----|----|-----|-----|-----|-----|-----|
| CIF32S | 32 | 32.5 | 50 | 12 | 15 | 12 | 37 | M6 | 46 | 2.5 |
| CIF40S | 40 | 38 | 63 | 16 | 20 | 16 | 46 | M6 | 59 | 2.5 |
| CIF50S | 50 | 46.5 | 75 | 16 | 20 | 16 | 56 | M8 | 69 | 3 |
| CIF63S | 63 | 56.5 | 90 | 20 | 25 | 20 | 69 | M8 | 84 | 3 |
| CIF80S | 80 | 72 | 110 | 20 | 25 | 20 | 87 | M10 | 102 | 4 |
| CIF100S | 100 | 89 | 132 | 25 | 30 | 25 | 107 | M10 | 125 | 4 |
| CIF125S | 125 | 110 | 160 | 25 | 32 | 25 | 134 | M12 | 155 | 5 |
| CIF160S | 160 | 140 | 200 | 32 | 40 | 32 | 171 | M16 | 190 | - |
| CIF200S | 200 | 175 | 250 | 32 | 40 | 32 | 214 | M16 | 240 | - |

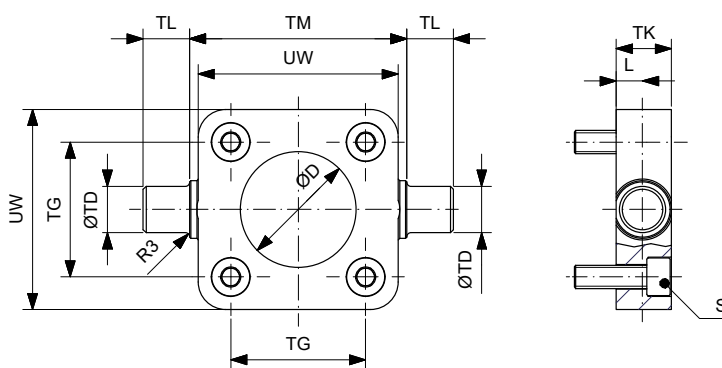
SUPPORTO PER CERNIERA INTERMEDIA (AT4) SUPPORT FOR INTERMEDIATE HINGE (AT4)



Materiale Corpo in acciaio zincato bussole in bronzo
Material Zinc coated steel body bronze bushes

| CODICE/CODE | Ø mm | ØCR | FN | FK | ØHB | ØA | LA | TH | C | UL | NH | ØB |
|-------------|---------|-----|----|----|-----|----|----|----|------|----|------|----|
| SUP32S | 32 | 12 | 30 | 15 | 6.6 | 11 | 7 | 32 | 10.5 | 46 | 18 | 22 |
| SUP4050S | 40-50 | 16 | 36 | 18 | 9 | 15 | 9 | 36 | 12 | 55 | 21 | 28 |
| SUP6380S | 63-80 | 20 | 40 | 20 | 11 | 18 | 11 | 42 | 13 | 65 | 23 | 32 |
| SUP100125S | 100-125 | 25 | 50 | 25 | 14 | 20 | 13 | 50 | 16 | 75 | 28.5 | 39 |
| SUP160200S | 160-200 | 32 | 60 | 30 | 18 | 26 | 17 | 60 | 22.5 | 92 | 40 | 45 |

CERNIERA OSCILLANTE ANTERIORE/POSTERIORE (MT5/MT6) FRONT/REAR TRUNNION (MT5/MT6)



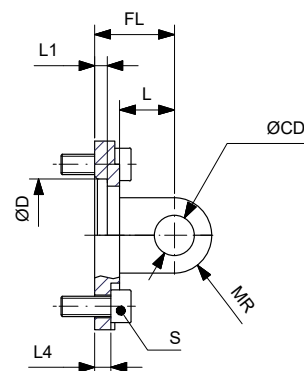
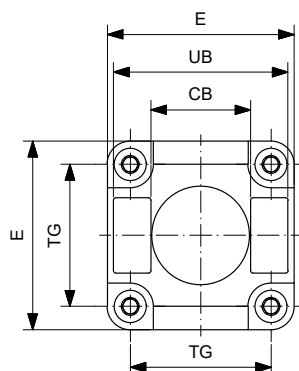
Materiale Acciaio zincato
Material Zinc coated steel

| CODICE/CODE | Ø mm | TG | UW | TM | TL | ØTD | ØD | TK | R3 | L | S |
|-------------|------|------|-----|-----|----|-----|----|----|-----|------|--------|
| CRB32S | 32 | 32.5 | 46 | 50 | 12 | 12 | 30 | 14 | 1 | 6.5 | M6X20 |
| CRB40S | 40 | 38 | 59 | 63 | 16 | 16 | 35 | 19 | 1.5 | 9 | M6X25 |
| CRB50S | 50 | 46.5 | 69 | 75 | 16 | 16 | 40 | 19 | 1.6 | 9 | M8X25 |
| CRB63S | 63 | 56.5 | 84 | 90 | 20 | 20 | 45 | 24 | 1.6 | 11.5 | M8X30 |
| CRB80S | 80 | 72 | 102 | 110 | 20 | 20 | 45 | 24 | 1.6 | 11.5 | M10X30 |
| CRB100S | 100 | 89 | 125 | 132 | 25 | 25 | 55 | 29 | 2 | 14 | M10X35 |
| CRB125S | 125 | 110 | 150 | 160 | 25 | 25 | 60 | 30 | 2 | 15 | M12X35 |
| CRB160S | 160 | 140 | 180 | 200 | 32 | 32 | 65 | 40 | 2.5 | 20 | M16X45 |
| CRB200S | 200 | 175 | 250 | 250 | 32 | 32 | 75 | 40 | 2.5 | 20 | M16X45 |

Condizioni di fornitura Supply conditions 00 Senza viti Without screws 01 Con viti With screws

ACCESSORI DI FISSAGGIO MOUNTING ACCESSORIES

CERNIERA FEMMINA IN ACCIAIO (MP2) STEEL FEMALE HINGE (MP2)



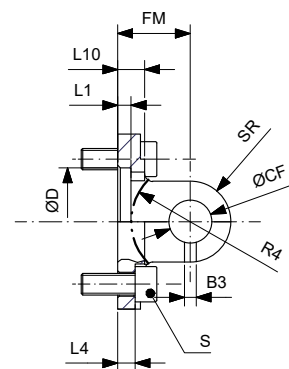
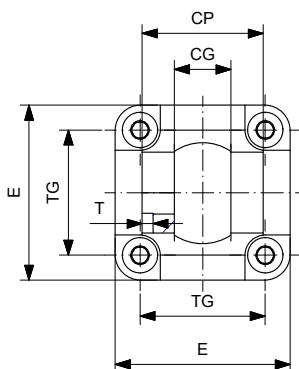
Materiale Acciaio zincato
Material Zinc coated steel

| CODICE/CODE | Ø mm | TG | CB | UB | ØCD | FL | L | ØD | L1 | L4 | S | MR | E |
|-------------|------|------|----|-----|-----|----|----|----|----|-----|--------|----|-----|
| CRF32S | 32 | 32.5 | 26 | 45 | 10 | 22 | 14 | 30 | 5 | 5.5 | M6X20 | 10 | 45 |
| CRF40S | 40 | 38 | 28 | 52 | 12 | 25 | 17 | 35 | 5 | 5.5 | M6X20 | 12 | 55 |
| CRF50S | 50 | 46.5 | 32 | 60 | 12 | 27 | 17 | 40 | 5 | 6.5 | M8X20 | 12 | 65 |
| CRF63S | 63 | 56.5 | 40 | 70 | 16 | 32 | 22 | 45 | 5 | 6.5 | M8X20 | 15 | 75 |
| CRF80S | 80 | 72 | 50 | 90 | 16 | 36 | 23 | 45 | - | 10 | M10X25 | 15 | 95 |
| CRF100S | 100 | 89 | 60 | 110 | 20 | 41 | 28 | 55 | - | 10 | M10X25 | 20 | 115 |
| CRF125S | 125 | 110 | 70 | 130 | 25 | 50 | 34 | 60 | - | 10 | M12X25 | 25 | 140 |

Nota: fornito completo di 4 viti DIN 912. Note: supplied with 4 screws DIN 912.

| Condizioni di fornitura Supply conditions | 00 | Senza viti Without screws | 01 | Con viti With screws | 02 | Con perno e viti With pin and screws |
|--|----|------------------------------|----|-------------------------|----|---|
|--|----|------------------------------|----|-------------------------|----|---|

CERNIERA FEMMINA STRETTA IN ACCIAIO PER SNODO SFERICO (AB6) STEEL CLEVIS BRACKET, SPHERICAL EYE, STRAIGHT (AB6)

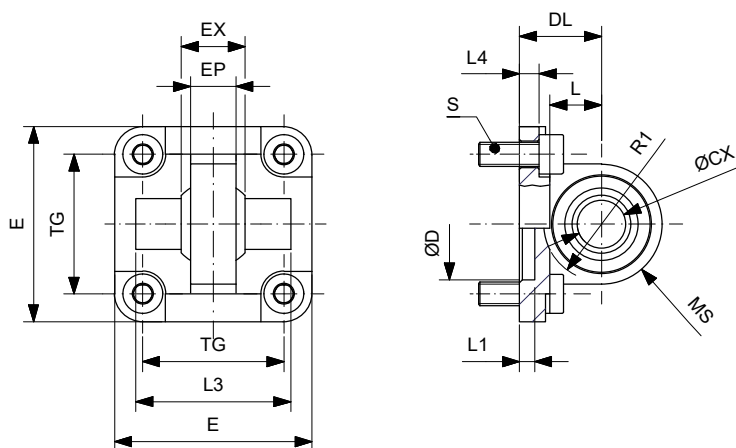


Materiale Acciaio verniciato
Material Painted steel

| CODICE/CODE | Ø mm | E | CP | CG | TG | FM | L1 | L10 | L4 | ØD | ØCF | T | B3 | SR | R4 | S |
|-------------|------|-----|----|----|------|----|----|-----|-----|----|-----|---|-----|----|----|--------|
| CFS32S | 32 | 45 | 34 | 14 | 32.5 | 22 | 5 | 8 | 5.5 | 30 | 10 | 3 | 3.3 | 10 | 17 | M6X20 |
| CFS40S | 40 | 55 | 40 | 16 | 38 | 25 | 5 | 8 | 5.5 | 35 | 12 | 4 | 4.3 | 12 | 20 | M6X20 |
| CFS50S | 50 | 65 | 45 | 21 | 46.5 | 27 | 5 | 10 | 6.5 | 40 | 16 | 4 | 4.3 | 15 | 22 | M8X20 |
| CFS63S | 63 | 75 | 51 | 21 | 56.5 | 32 | 5 | 10 | 6.5 | 45 | 16 | 4 | 4.3 | 15 | 25 | M8X20 |
| CFS80S | 80 | 95 | 65 | 25 | 72 | 36 | 5 | 13 | 10 | 45 | 20 | 4 | 4.3 | 20 | 30 | M10X25 |
| CFS100S | 100 | 115 | 75 | 25 | 89 | 41 | 5 | 13 | 10 | 55 | 20 | 4 | 4.3 | 20 | 32 | M10X25 |
| CFS125S | 125 | 140 | 97 | 37 | 110 | 50 | 7 | 16 | 10 | 60 | 30 | 6 | 6.3 | 30 | 42 | M12X25 |

| Condizioni di fornitura Supply conditions | 00 | Senza viti Without screws | 01 | Con viti With screws | 02 | Con perno e viti With pin and screws |
|--|----|------------------------------|----|-------------------------|----|---|
|--|----|------------------------------|----|-------------------------|----|---|

CERNIERA MASCHIO SNODATA ACCIAIO (MP6) STEEL MALE HINGE WITH SPHERICAL BEARING (MP6)

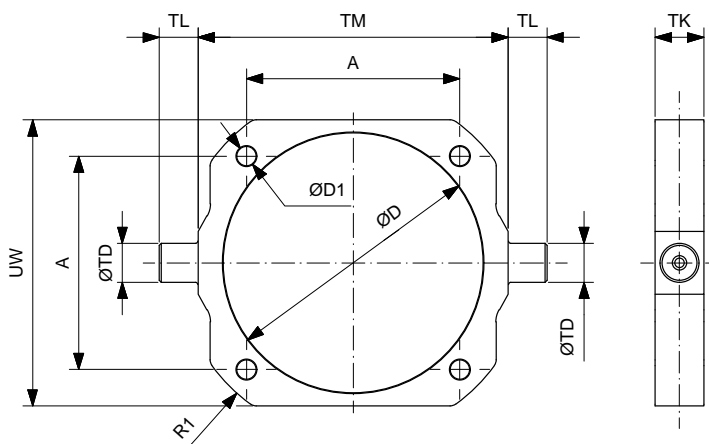


Materiale Acciaio verniciato
Material Painted steel

| CODICE/CODE | Ø mm | TG | EP | DL | ØCX | MS | ØD | E | L4 | L1 | L3 | R1 | EX | S | L |
|-------------|------|------|------|----|-----|----|----|-----|-----|----|----|----|----|--------|----|
| CMT32S | 32 | 32.5 | 10.5 | 22 | 10 | 15 | 30 | 45 | 5.5 | 5 | - | - | 14 | M6X20 | 14 |
| CMT40S | 40 | 38 | 12 | 25 | 12 | 18 | 35 | 55 | 5.5 | 5 | - | - | 16 | M6X20 | 17 |
| CMT50S | 50 | 46.5 | 15 | 27 | 16 | 20 | 40 | 65 | 6.5 | 5 | 51 | 19 | 21 | M8X20 | 17 |
| CMT63S | 63 | 56.5 | 15 | 32 | 16 | 23 | 45 | 75 | 6.5 | 5 | - | - | 21 | M8X20 | 22 |
| CMT80S | 80 | 72 | 18 | 36 | 20 | 27 | 45 | 95 | 10 | 5 | 70 | 24 | 25 | M10X25 | 23 |
| CMT100S | 100 | 89 | 18 | 41 | 20 | 30 | 55 | 115 | 10 | 5 | - | - | 25 | M10X25 | 28 |
| CMT125S | 125 | 110 | 25 | 50 | 30 | 40 | 60 | 140 | 10 | 7 | - | - | 37 | M12X25 | 34 |

| Condizioni di fornitura Supply conditions | 00 | Senza viti Without screws | 01 | Con viti With screws | 02 | Con perno e viti With pin and screws |
|--|----|------------------------------|----|-------------------------|----|---|
|--|----|------------------------------|----|-------------------------|----|---|

CERNIERA INTERMEDIA PER CILINDRI TIRANTATI Ø250-320 (MT4) INTERMEDIATE HINGE FOR TIE RODS CYLINDERS Ø250-320 (MT4)



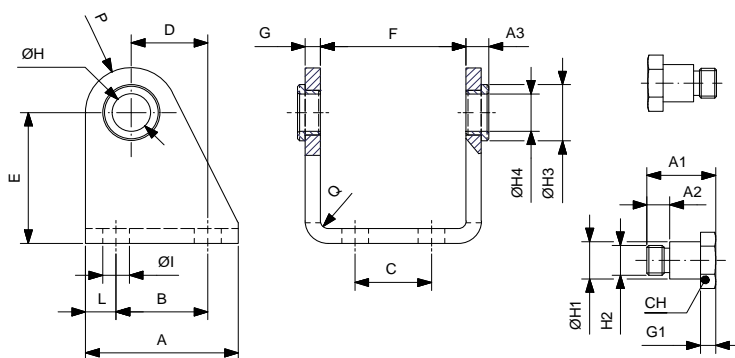
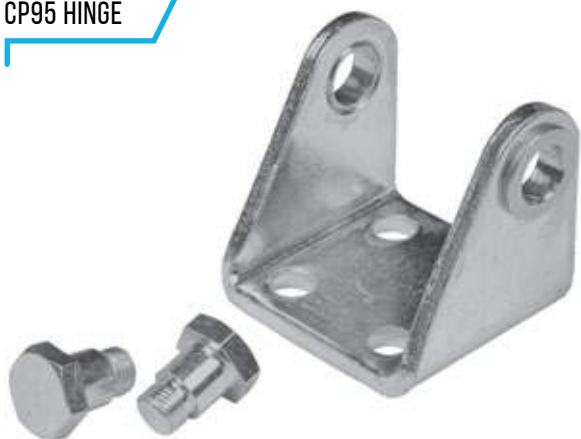
Materiale Acciaio zincato
Material Zinc coated steel

| CODICE/CODE | Ø mm | A | TM | TL | TK | ØTD | ØD | ØD1 | UW | R1 | DADO/NUT* |
|-------------|------|-----|-----|----|----|-----|-----|-------|-----|-----|-----------|
| CIT250S | 250 | 220 | 320 | 40 | 50 | 40 | 264 | 20.25 | 295 | 180 | M20X2.5 |
| CIT320S | 320 | 270 | 400 | 50 | 70 | 50 | 338 | 24.25 | 370 | 220 | M24X3 |

Nota: l'utilizzo della cerniera è consentito solo in abbinamento a cilindri con tiranti interamente filettati. L'accessorio viene fornito provvisto di appositi dadi per il posizionamento e fissaggio (*)
Note: it is possible to use the intermediate hinge only combined with cylinders equipped with threaded tie rods. The accessory is supplied with nuts for positioning and fixing (*)

ACCESSORI DI FISSAGGIO MOUNTING ACCESSORIES

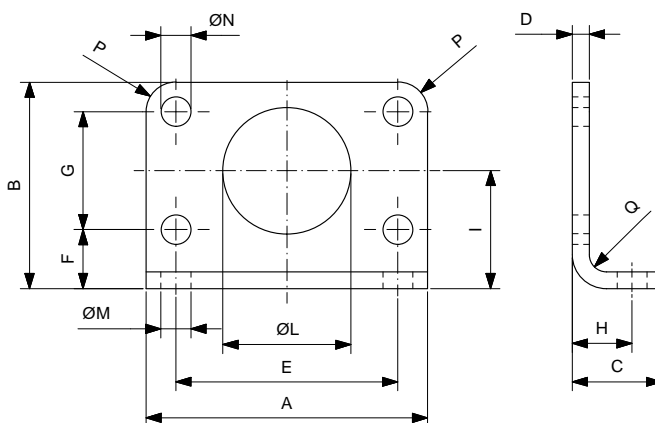
CERNIERA CP95 CP95 HINGE



Materiale Perni e corpo in acciaio zincato boccole in ottone
Material Zinc coated steel pivots and body brass bushes

| CODICE/CODE | Ømm | A | A1 | A2 | A3 | B | C | D | E | F | G | G1 | ØH | ØH1 | H2 | ØH3 | ØH4 | CH | ØI | L | P | Q |
|-------------|-----|----|------|----|-----|----|----|----|----|------|---|----|----|-----|---------|-----|-----|----|----|----|----|---|
| COC32S | 32 | 40 | 18 | 6 | 6 | 24 | 20 | 20 | 35 | 38.1 | 4 | 4 | 12 | 10 | M8x1 | 15 | 10 | 13 | 7 | 8 | 12 | 4 |
| COC40S | 40 | 50 | 21.6 | 7 | 7 | 30 | 28 | 27 | 40 | 46.1 | 5 | 5 | 15 | 12 | M10x1 | 20 | 12 | 17 | 9 | 10 | 13 | 5 |
| COC50S | 50 | 54 | 26.4 | 9 | 8.5 | 34 | 36 | 30 | 45 | 57.1 | 6 | 6 | 18 | 14 | M12x1.5 | 23 | 14 | 19 | 9 | 10 | 14 | 6 |
| COC63S | 63 | 65 | 31.5 | 13 | 8.5 | 35 | 42 | 34 | 50 | 70.1 | 6 | 6 | 20 | 16 | M14x1.5 | 23 | 16 | 19 | 9 | 15 | 16 | 6 |

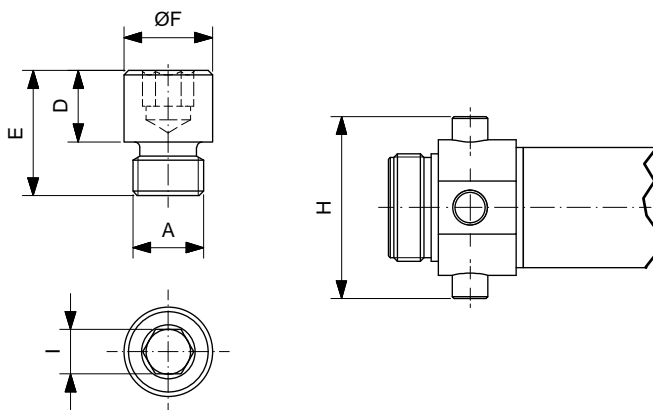
PIEDINO FLANGIA CP95 CP95 FOOT FLANGE



Materiale Acciaio zincato
Material Zinc coated steel

| CODICE/CODE | Ømm | A | B | C | D | E | F | G | H | I | ØL | ØM | ØN | P | Q |
|-------------|-----|----|----|----|---|----|----|----|----|----|----|----|----|----|---|
| APC32S | 32 | 66 | 49 | 21 | 4 | 52 | 14 | 28 | 14 | 28 | 30 | 7 | 7 | 7 | 4 |
| APC40S | 40 | 80 | 58 | 30 | 5 | 60 | 18 | 30 | 20 | 33 | 38 | 9 | 9 | 10 | 5 |
| APC50S | 50 | 90 | 70 | 30 | 6 | 70 | 20 | 40 | 20 | 40 | 45 | 9 | 9 | 10 | 6 |
| APC63S | 63 | 96 | 80 | 30 | 6 | 76 | 20 | 50 | 20 | 45 | 45 | 9 | 9 | 10 | 6 |

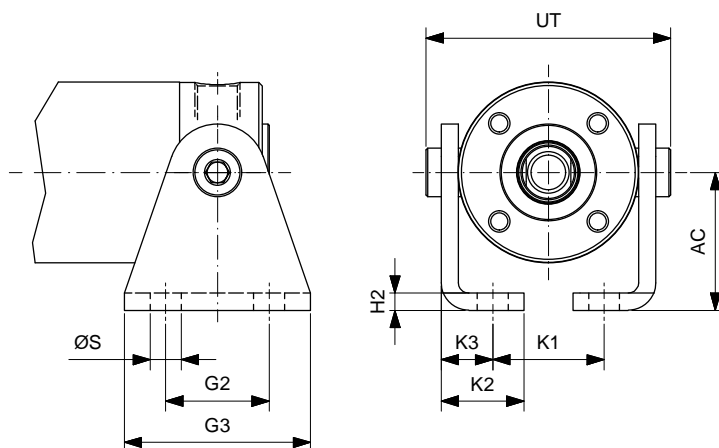
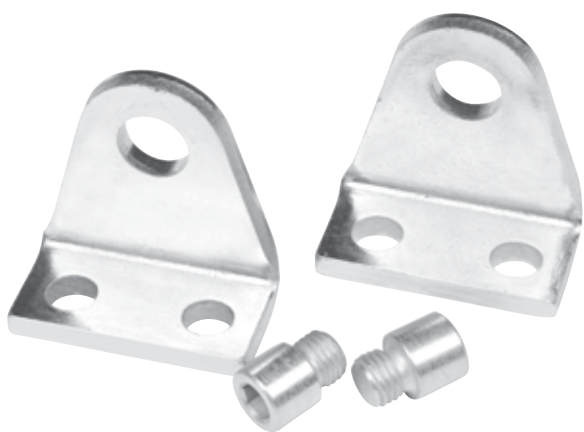
COPPIA DI PERNI CP95 CP95 PAIR PIVOTS



Materiale Acciaio zincato
Material Zinc coated steel

| CODICE/CODE | Ø mm | A | D | E | ØF | I | H |
|-------------|------|---------|-----|------|----|---|----|
| CPC32S | 32 | M8x1 | 8 | 14 | 10 | 5 | 51 |
| CPC40S | 40 | M10x1 | 9.5 | 16.5 | 12 | 6 | 61 |
| CPC50S | 50 | M12x1.5 | 11 | 20 | 14 | 6 | 75 |
| CPC63S | 63 | M14x1.5 | 13 | 28 | 16 | 8 | 92 |

CERNIERA SERIE E E SERIES HINGE

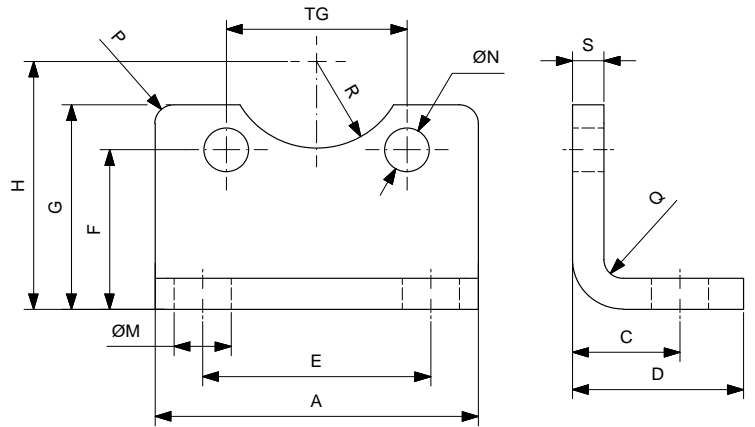


Materiale Acciaio zincato
Material Zinc coated steel

| CODICE/CODE | Ø mm | ØS | G2 | G3 | H2 | K1 | K2 | K3 | AC | UT |
|-------------|------|----|----|----|----|------|------|------|----|----|
| COE32S | 32 | 7 | 20 | 35 | 4 | 15.5 | 20 | 13 | 25 | 47 |
| COE40S | 40 | 7 | 28 | 42 | 4 | 23.5 | 20 | 13 | 28 | 57 |
| COE50S | 50 | 9 | 30 | 54 | 5 | 32.3 | 24 | 15 | 40 | 71 |
| COE63S | 63 | 9 | 40 | 64 | 5 | 40.5 | 26.5 | 17.5 | 47 | 84 |

ACCESSORI DI FISSAGGIO MOUNTING ACCESSORIES

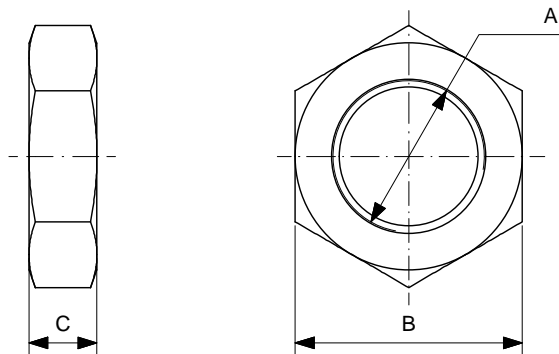
PIEDINO SERIE E E SERIES FOOT



Materiale Acciaio zincato
Material Zinc coated steel

| CODICE/CODE | Ø mm | D | C | ØM | E | A | S | G | H | F | R | TG | ØN | P | Q |
|-------------|------|----|-----|----|----|----|---|----|----|----|------|------|----|---|---|
| APE32S | 32 | 16 | 7.5 | 7 | 18 | 32 | 4 | 22 | 25 | 16 | 10 | 19 | 5 | 2 | 2 |
| APE40S | 40 | 16 | 7 | 7 | 27 | 40 | 4 | 23 | 28 | 16 | 11.5 | 23.5 | 6 | 2 | 2 |
| APE50S | 50 | 17 | 10 | 9 | 36 | 51 | 5 | 33 | 40 | 17 | 14 | 28.5 | 7 | 3 | 3 |
| APE63S | 63 | 19 | 10 | 9 | 45 | 61 | 5 | 38 | 47 | 19 | 17.5 | 35.5 | 9 | 4 | 3 |

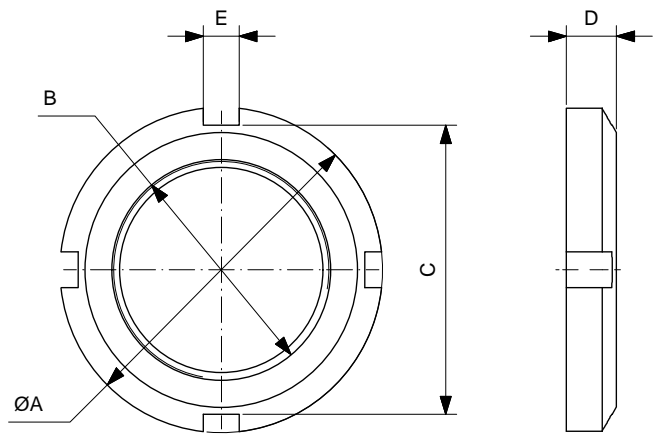
DADI NUT



Materiale Acciaio inox AISI304
Material 304 stainless steel

| CODICE/CODE | A | B | C |
|-------------|----------|----|----|
| ANA1216I | M6 | 10 | 4 |
| ANA20I | M8X1.25 | 13 | 5 |
| ANA25I | M10X1.25 | 17 | 6 |
| ANA32I | M10X1.5 | 17 | 6 |
| ANA40BI | M12X1.25 | 19 | 7 |
| ANA40I | M12X1.75 | 19 | 7 |
| ANT1216I | M16X1.5 | 22 | 5 |
| ANA50BI | M16X1.5 | 24 | 8 |
| ANA5063I | M16X2 | 24 | 8 |
| ANA80100I | M20X1.5 | 30 | 9 |
| ANT2025I | M22X1.5 | 27 | 8 |
| ANA125XI | M27X2 | 41 | 12 |
| ANA160200XI | M36X2 | 55 | 14 |

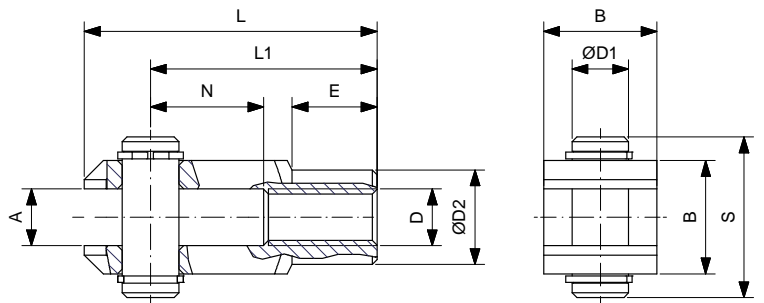
GHIERA SLOTTED NUT



Materiale Acciaio inox AISI304
Material AISI 303 stainless steel

| CODICE/CODE | ØA | B | C | D | E |
|-------------|----|---------|----|---|---|
| AN32I | 45 | M30x1.5 | 40 | 7 | 5 |
| AN40I | 50 | M38x1.5 | 46 | 8 | 5 |
| AN50/63I | 58 | M45x1.5 | 52 | 9 | 6 |

FORCELLA CON PERNO CLEVIS WITH PIVOT

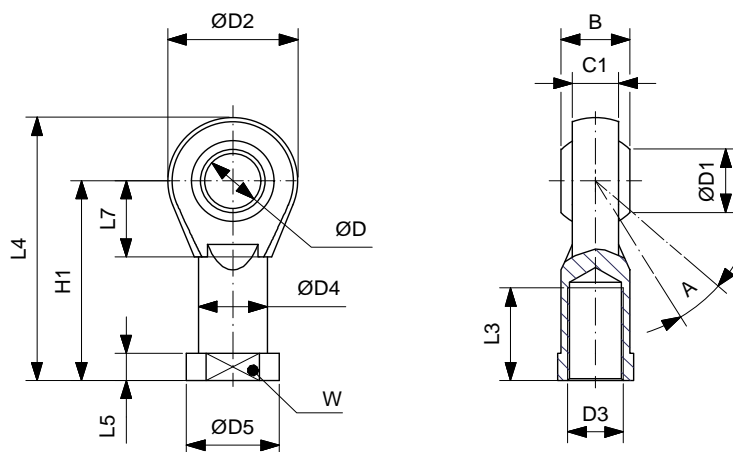


Materiale Acciaio inox AISI303
Material Stainless steel

| CODICE/CODE | D | A | B | ØD1 | S | N | L1 | L | E | ØD2 |
|-------------|----------|----|----|-----|----|----|-----|-----|----|-----|
| FORM6ISOI | M6 | 6 | 12 | 6 | 17 | 12 | 24 | 31 | 9 | 10 |
| FORM8ISOI | M8 | 8 | 16 | 8 | 21 | 16 | 32 | 42 | 12 | 14 |
| FORM10ISOI | M10X1.25 | 10 | 20 | 10 | 25 | 20 | 40 | 52 | 15 | 18 |
| FORM10DINI | M10X1.5 | 10 | 20 | 10 | 25 | 20 | 40 | 52 | 15 | 18 |
| FORM12ISOI | M12X1.25 | 12 | 24 | 12 | 30 | 24 | 48 | 62 | 18 | 20 |
| FORM12DINI | M12X1.75 | 12 | 24 | 12 | 30 | 24 | 48 | 62 | 18 | 20 |
| FORM16ISOI | M16X1.5 | 16 | 32 | 16 | 39 | 32 | 64 | 83 | 24 | 26 |
| FORM16DINI | M16X2 | 16 | 32 | 16 | 39 | 32 | 64 | 83 | 24 | 26 |
| FORM20ISOI | M20X1.5 | 20 | 40 | 20 | 48 | 40 | 80 | 105 | 30 | 34 |
| FORM27ISOI | M27x2 | 30 | 55 | 30 | 65 | 54 | 110 | 148 | 38 | 48 |
| FORM36DINI | M36x2 | 35 | 70 | 35 | 84 | 72 | 144 | 188 | 40 | 60 |

ACCESSORI DI FISSAGGIO MOUNTING ACCESSORIES

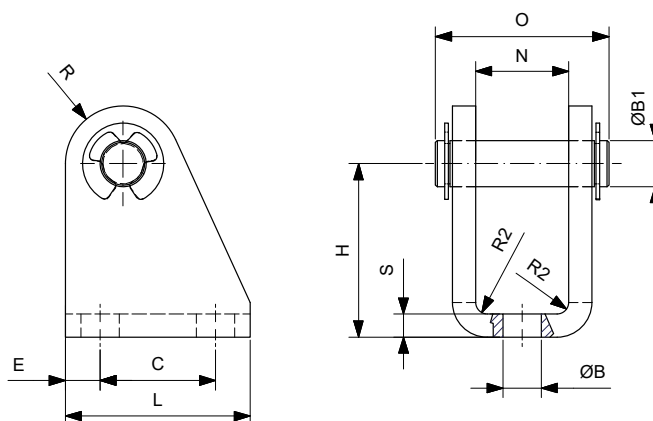
TESTA A SNODO ROD END



Materiale Corpo in acciaio inox boccola in bronzo sinterizzato
Material Stainless steel body sintered bronze bush

| CODICE/CODE | D3 | W | L3 | A | ØD | ØD1 | C1 | B | ØD4 | D5 | L5 | L7 | H1 | L4 | ØD2 |
|---------------|----------|----|----|-----|----|------|------|----|------|----|-----|----|-----|-----|-----|
| TSNDM4X0.7I | M4 | 9 | 10 | 13° | 5 | 7.7 | 6 | 8 | 9 | 11 | 4 | 10 | 27 | 36 | 18 |
| TSNDM6X1I | M6 | 11 | 12 | 13° | 6 | 8.9 | 6.75 | 9 | 10 | 13 | 5 | 11 | 30 | 40 | 20 |
| TSNDM8X1.25I | M8 | 14 | 16 | 14° | 8 | 10.4 | 9 | 12 | 12.5 | 16 | 5 | 13 | 36 | 48 | 24 |
| TSNDM10X1.25I | M10X1.25 | 17 | 20 | 13° | 10 | 12.9 | 10.5 | 14 | 15 | 19 | 6.5 | 15 | 43 | 57 | 28 |
| TSNDM10X1.5I | M10X1.5 | 17 | 20 | 13° | 10 | 12.9 | 10.5 | 14 | 15 | 19 | 6.5 | 15 | 43 | 57 | 28 |
| TSNDM12X1.25I | M12X1.25 | 19 | 22 | 13° | 12 | 15.4 | 12 | 16 | 17.5 | 22 | 6.5 | 17 | 50 | 66 | 32 |
| TSNDM12X1.75I | M12X1.75 | 19 | 22 | 13° | 12 | 15.4 | 12 | 16 | 17.5 | 22 | 6.5 | 17 | 50 | 66 | 32 |
| TSNDM16X1.5I | M16X1.5 | 22 | 28 | 15° | 16 | 19.3 | 15 | 21 | 22 | 27 | 8 | 23 | 64 | 85 | 42 |
| TSNDM16X2I | M16X2 | 22 | 28 | 15° | 16 | 19.3 | 15 | 21 | 22 | 27 | 8 | 23 | 64 | 85 | 42 |
| TSNDM20X1.5I | M20X1.5 | 30 | 33 | 14° | 20 | 24.3 | 18 | 25 | 27.5 | 34 | 10 | 27 | 77 | 102 | 50 |
| TSNDM27X2I | M27X2 | 41 | 51 | 17° | 30 | 34.8 | 25 | 37 | 40 | 50 | 15 | 36 | 110 | 145 | 70 |
| TSNDM36X2I | M36X2 | 50 | 56 | 19° | 35 | 37.7 | 28 | 43 | 46 | 58 | 17 | 41 | 125 | 165 | 80 |

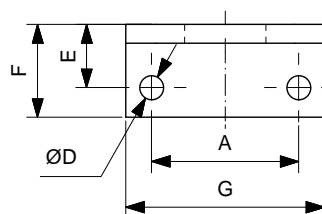
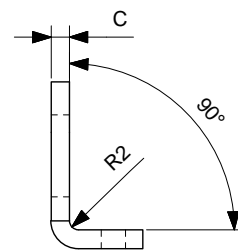
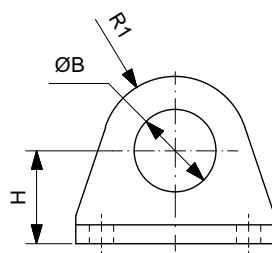
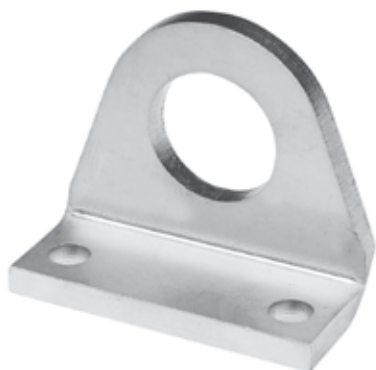
CERNIERA (MP3) HINGE (MP3)



Materiale Acciaio inox AISI304
Material 304 stainless steel

| CODICE/CODE | Ømm | L | H | ØB1 | S | E | C | N | ØB | O | R | R2 |
|-------------|-------|----|----|-----|-----|------|------|------|-----|----|----|-----|
| COM0810I | 08-10 | 22 | 24 | 4 | 2.5 | 4.75 | 12.5 | 8.1 | 4.5 | 18 | 5 | 1.5 |
| COM1216I | 12-16 | 25 | 27 | 6 | 3 | 5 | 15 | 12.1 | 5.5 | 24 | 7 | 1.5 |
| COM2025I | 20-25 | 32 | 30 | 8 | 4 | 6 | 20 | 16.1 | 6.6 | 31 | 10 | 2 |

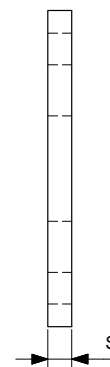
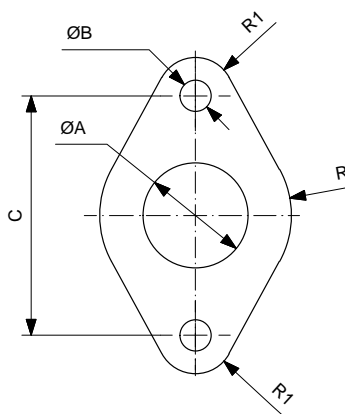
PIEDINO (MS3)
FOOT (MS3)



Materiale Acciaio inox AISI304
Material 304 stainless steel

| CODICE/CODE | Ømm | A | ØB | C | ØD | E | F | G | H | R1 | R2 |
|-------------|-------|----|------|---|-----|----|----|----|----|----|-----|
| APM0810I | 08-10 | 25 | 12 | 3 | 4.5 | 11 | 16 | 35 | 16 | 10 | 1.5 |
| APM1216I | 12-16 | 32 | 16.1 | 4 | 5.5 | 14 | 20 | 42 | 20 | 13 | 2 |
| APM2025I | 20-25 | 40 | 22.1 | 5 | 6.6 | 17 | 25 | 54 | 25 | 20 | 2.5 |

FLANGIA (MF8)
FLANGE (MF8)

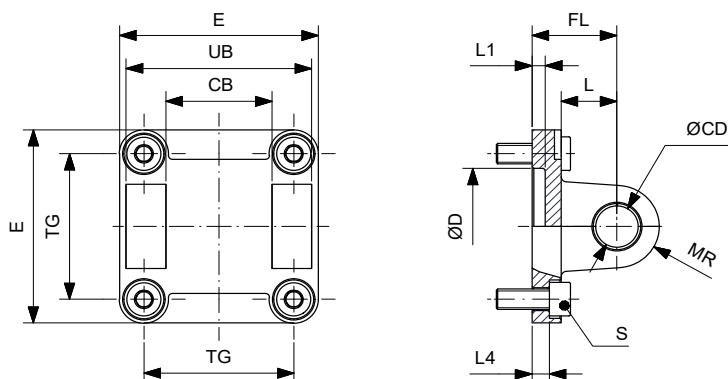
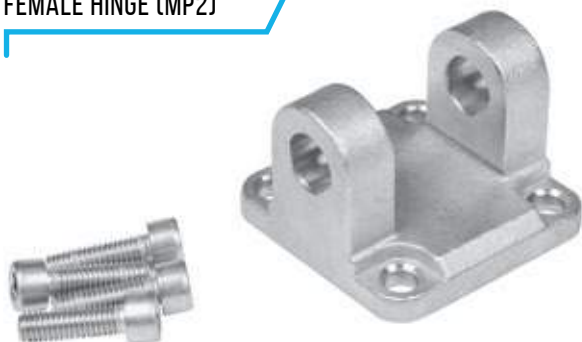


Materiale Acciaio inox AISI304
Material 304 stainless steel

| CODICE/CODE | Ømm | ØA | ØB | C | R | R1 | S |
|-------------|-------|----|-----|----|----|----|---|
| AFM0810I | 08-10 | 12 | 4.5 | 30 | 11 | 5 | 3 |
| AFM1216I | 12-16 | 16 | 5.5 | 40 | 15 | 6 | 4 |
| AFM2025I | 20-25 | 22 | 6.6 | 50 | 20 | 8 | 5 |

ACCESSORI DI FISSAGGIO MOUNTING ACCESSORIES

CERNIERA FEMMINA (MP2) FEMALE HINGE (MP2)



Materiale Acciaio inox AISI304
Material 304 stainless steel

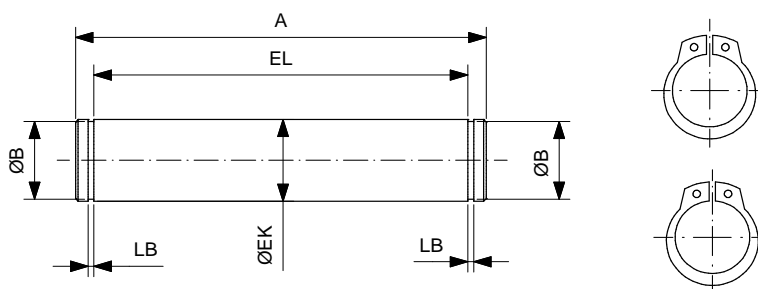
| CODICE/CODE | Ø mm | TG | CB | UB | ØCD | FL | L | ØD | L1 | L4 | S | MR | E |
|-------------|------|------|----|-----|-----|----|----|----|----|-----|--------|----|-----|
| CRF32I | 32 | 32.5 | 26 | 45 | 10 | 22 | 13 | 30 | 5 | 5.5 | M6X20 | 10 | 45 |
| CRF40I | 40 | 38 | 28 | 52 | 12 | 25 | 16 | 35 | 5 | 5.5 | M6X20 | 12 | 52 |
| CRF50I | 50 | 46.5 | 32 | 60 | 12 | 27 | 16 | 40 | 5 | 6.5 | M8X20 | 12 | 65 |
| CRF63I | 63 | 56.5 | 40 | 70 | 16 | 32 | 21 | 45 | 5 | 6.5 | M8X20 | 16 | 75 |
| CRF80I | 80 | 72 | 50 | 90 | 16 | 36 | 22 | 45 | 5 | 10 | M10X25 | 16 | 95 |
| CRF100I | 100 | 89 | 60 | 110 | 20 | 41 | 27 | 55 | 5 | 10 | M10X25 | 20 | 115 |
| CRF125I | 125 | 110 | 70 | 130 | 25 | 50 | 30 | 60 | 7 | 10 | M12X25 | 25 | 140 |
| CRF160I | 160 | 140 | 90 | 170 | 30 | 55 | 35 | 65 | 7 | 10 | M16X30 | 25 | 180 |
| CRF200I | 200 | 175 | 90 | 170 | 30 | 60 | 35 | 75 | 7 | 11 | M16X30 | 25 | 220 |

Nota: fornito completo di 4 viti DIN 912 - Tutti i diametri sono disponibili, su richiesta, anche in INOX AISI316 per ordinare, sostituire la «I» con la «Y» al codice standard.

Note: supplied with 4 screws DIN 912 - All diameters are available also with AISI 316 stainless steel, to order indicate «Y» instead of «I» in the standard code number.

Condizioni di fornitura 00 Senza viti 01 Con viti 02 Con perno e viti
Supply conditions Without screws With screws With pin and screws

PERNO PER CERNIERA FEMMINA (AA4) PIVOT FOR FEMALE HINGE (AA4)



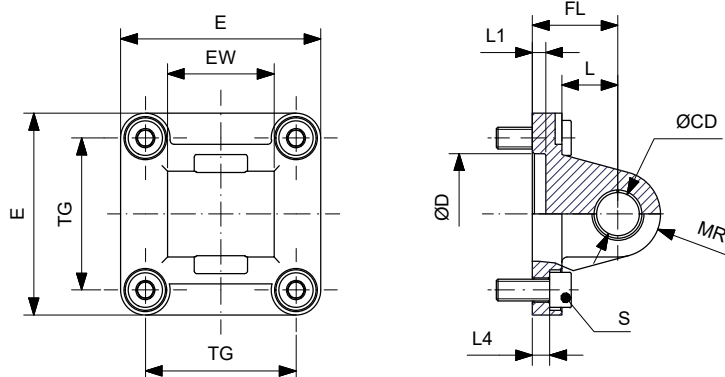
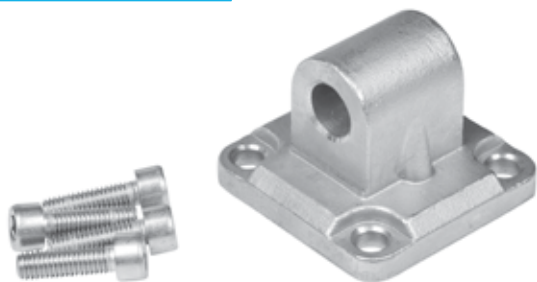
Materiale Acciaio inox AISI304
Material 304 stainless steel

| CODICE/CODE | Ø mm | ØEK | EL | ØB | LB | A |
|-------------|---------|-----|-----|------|------|-----|
| PRC32I | 32 | 10 | 46 | 9.6 | 1.1 | 53 |
| PRC40I | 40 | 12 | 53 | 11.5 | 1.1 | 60 |
| PRC50I | 50 | 12 | 61 | 11.5 | 1.1 | 68 |
| PRC63I | 63 | 16 | 71 | 15.2 | 1.1 | 78 |
| PRC80I | 80 | 16 | 91 | 15.2 | 1.1 | 98 |
| PRC100I | 100 | 20 | 111 | 19 | 1.3 | 118 |
| PRC125I | 125 | 25 | 132 | 23.9 | 1.3 | 139 |
| PRC160200I | 160-200 | 30 | 172 | 28.6 | 1.6 | 180 |
| PRC250I | 200 | 40 | 202 | 37.5 | 1.85 | 214 |
| PRC320I | 250 | 45 | 222 | 42.5 | 1.85 | 234 |

Nota: fornito completo seeger.

Note: supplied with retaining rings.

CERNIERA MASCHIO (MP4) MALE HINGE (MP4)



Materiale Acciaio inox AISI304
Material 304 stainless steel

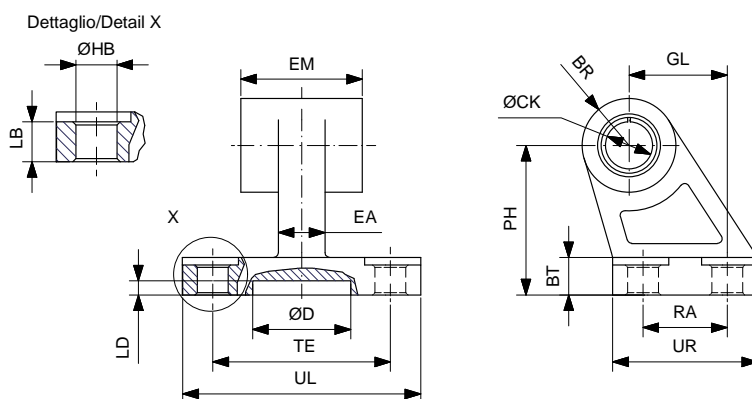
| CODICE/CODE | Ø mm | TG | EW | ØCD | FL | L | ØD | L1 | L4 | S | MR | E |
|-------------|------|------|----|-----|----|----|----|----|-----|--------|----|-----|
| CRM32I | 32 | 32.5 | 26 | 10 | 22 | 13 | 30 | 5 | 5.5 | M6X20 | 10 | 45 |
| CRM40I | 40 | 38 | 28 | 12 | 25 | 16 | 35 | 5 | 5.5 | M6X20 | 12 | 52 |
| CRM50I | 50 | 46.5 | 32 | 12 | 27 | 16 | 40 | 5 | 6.5 | M8X20 | 12 | 65 |
| CRM63I | 63 | 56.5 | 40 | 16 | 32 | 21 | 45 | 5 | 6.5 | M8X20 | 16 | 75 |
| CRM80I | 80 | 72 | 50 | 16 | 36 | 22 | 45 | 5 | 10 | M10X25 | 16 | 95 |
| CRM100I | 100 | 89 | 60 | 20 | 41 | 27 | 55 | 5 | 10 | M10X25 | 20 | 115 |
| CRM125I | 125 | 110 | 70 | 25 | 50 | 30 | 60 | 7 | 10 | M12X25 | 25 | 140 |
| CRM160I | 160 | 140 | 90 | 30 | 55 | 35 | 65 | 7 | 10 | M16X30 | 25 | 180 |
| CRM200I | 200 | 175 | 90 | 30 | 60 | 35 | 75 | 7 | 11 | M16X30 | 25 | 220 |

Nota: fornito completo di 4 viti DIN 912 - Tutti i diametri sono disponibili, su richiesta, anche in INOX AISI316 per ordinare, sostituire la «I» con la "Y" al codice standard.

Note: supplied with 4 screws DIN 912 - All diameters are available also with AISI 316 stainless steel, to order indicate «Y» instead of «I» in the standard code number.

| Condizioni di fornitura Supply conditions | 00 | Senza viti Without screws | 01 | Con viti With screws |
|--|----|------------------------------|----|-------------------------|
|--|----|------------------------------|----|-------------------------|

ARTICOLAZIONE A SQUADRA (AB7) SQUARE JOINT (AB7)



Materiale Acciaio inox AISI304
Material 304 stainless steel

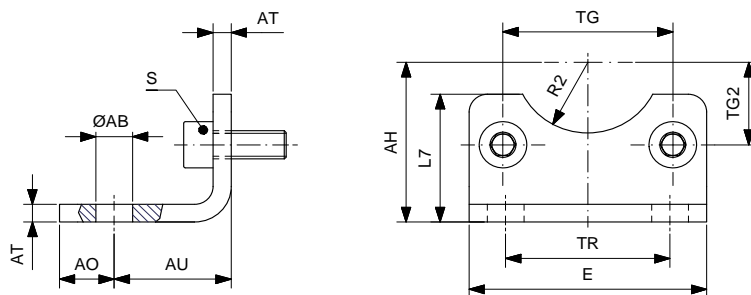
| CODICE/CODE | Ømm | ØCK | EM | BR | PH | GL | ØHB | LB | BT | TE | RA | ØD | LD | UL | UR | EA |
|-------------|-----|-----|----|------|----|----|-----|------|----|----|----|----|----|-----|----|----|
| ART32I | 32 | 10 | 26 | 10 | 32 | 21 | 6.6 | 6.4 | 8 | 38 | 18 | 21 | 3 | 51 | 31 | 10 |
| ART40I | 40 | 12 | 28 | 11 | 36 | 24 | 6.6 | 8.4 | 10 | 41 | 22 | 21 | 3 | 54 | 35 | 12 |
| ART50I | 50 | 12 | 32 | 13 | 45 | 33 | 9 | 10.4 | 12 | 50 | 30 | 21 | 3 | 65 | 45 | 16 |
| ART63I | 63 | 16 | 40 | 15 | 50 | 37 | 9 | 10.4 | 12 | 52 | 35 | 21 | 3 | 67 | 50 | 16 |
| ART80I | 80 | 16 | 50 | 15 | 63 | 47 | 11 | 11.5 | 14 | 66 | 40 | 21 | 3 | 86 | 60 | 20 |
| ART100I | 100 | 20 | 60 | 19 | 71 | 55 | 11 | 14.5 | 15 | 76 | 50 | 11 | 3 | 96 | 70 | 20 |
| ART125I | 125 | 25 | 70 | 22.5 | 90 | 70 | 14 | 16.8 | 20 | 94 | 60 | 21 | 3 | 124 | 90 | 30 |

Tutti i diametri sono disponibili, su richiesta, anche in INOX AISI316 per ordinare, sostituire la «I» con la "Y" al codice standard.

Note: all diameters are available also with AISI 316 stainless steel, to order indicate «Y» instead of «I» in the standard code number.

ACCESSORI DI FISSAGGIO MOUNTING ACCESSORIES

PIEDINO BASSO (MS1) LOW-RISE PEDESTAL (MS1)



Materiale Acciaio inox AISI304
Material 304 stainless steel

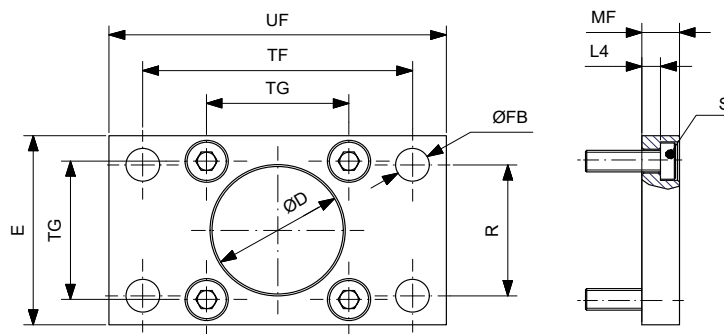
| CODICE/CODE | Ø mm | TG | TG2 | AH | R2 | ØAB | AO | AU | TR | AT | S | L7 | E |
|-------------|------|------|-------|-----|------|------|----|----|-----|----|--------|-----|-----|
| AFD32I | 32 | 32.5 | 16.25 | 32 | 15 | 7 | 11 | 24 | 32 | 4 | M6X16 | 30 | 45 |
| AFD40I | 40 | 38 | 19 | 36 | 17.5 | 10 | 8 | 28 | 36 | 4 | M6X16 | 30 | 52 |
| AFD50I | 50 | 46.5 | 23.25 | 45 | 20 | 10 | 15 | 32 | 45 | 5 | M8X20 | 36 | 65 |
| AFD63I | 63 | 56.5 | 28.25 | 50 | 22.5 | 10 | 13 | 32 | 50 | 5 | M8X20 | 35 | 75 |
| AFD80I | 80 | 72 | 36 | 63 | 22.5 | 12 | 14 | 41 | 63 | 6 | M10X20 | 47 | 95 |
| AFD100I | 100 | 89 | 44.5 | 71 | 27.5 | 14.5 | 16 | 41 | 75 | 6 | M10X20 | 53 | 115 |
| AFD125I | 125 | 110 | 55 | 90 | 30 | 16.5 | 25 | 45 | 90 | 8 | M12X25 | 70 | 140 |
| AFD160I | 160 | 140 | 70 | 115 | 32.5 | 18.5 | 15 | 60 | 115 | 10 | M16X30 | 100 | 180 |
| AFD200I | 200 | 175 | 87.5 | 135 | 37.5 | 24 | 30 | 70 | 135 | 12 | M16X30 | 109 | 220 |

Nota: fornito completo di 2 viti DIN 912 - Tutti i diametri sono disponibili, su richiesta, anche in INOX AISI316 per ordinare, sostituire la «I» con la "Y" al codice standard.

Note: supplied with 2 DIN 912 screws - All diameters are available also with AISI 316 stainless steel, to order indicate «Y» instead of «I» in the standard code number.

| Condizioni di fornitura Supply conditions | 00 | Senza viti Without screws | 01 | Con viti With screws |
|--|----|------------------------------|----|-------------------------|
|--|----|------------------------------|----|-------------------------|

FLANGIA (MF1-MF2) FLANGE (MF1-MF2)



Materiale Acciaio inox AISI304
Material 304 stainless steel

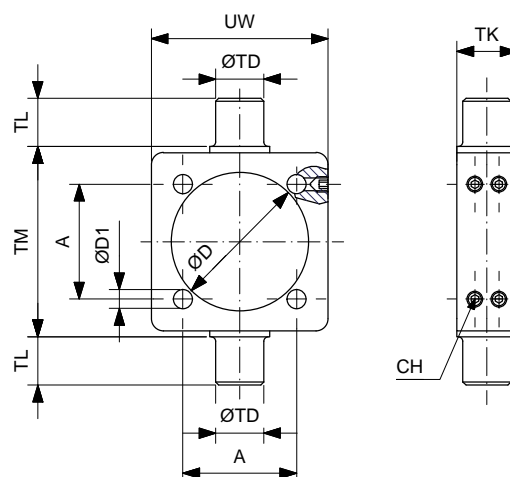
| CODICE/CODE | Ø mm | TG | ØD | ØFB | R | TF | L4 | S | UF | E | MF |
|-------------|------|------|----|-----|-----|-----|------|--------|-----|-----|----|
| AFP32I | 32 | 32.5 | 30 | 7 | 32 | 64 | 5 | M6x20 | 80 | 45 | 10 |
| AFP40I | 40 | 38 | 35 | 9 | 36 | 72 | 5 | M6x20 | 90 | 52 | 10 |
| AFP50I | 50 | 46.5 | 40 | 9 | 45 | 90 | 6.5 | M8x20 | 110 | 65 | 12 |
| AFP63I | 63 | 56.5 | 45 | 9 | 50 | 100 | 6.5 | M8x20 | 120 | 75 | 12 |
| AFP80I | 80 | 72 | 45 | 12 | 63 | 126 | 9 | M10x25 | 150 | 95 | 16 |
| AFP100I | 100 | 89 | 55 | 14 | 75 | 150 | 9 | M10x25 | 170 | 115 | 16 |
| AFP125I | 125 | 110 | 60 | 16 | 90 | 180 | 10.5 | M12x25 | 205 | 140 | 20 |
| AFP160I | 160 | 140 | 65 | 18 | 115 | 230 | 9.5 | M16x30 | 260 | 180 | 20 |
| AFP200I | 200 | 175 | 75 | 22 | 135 | 270 | 12.5 | M16x30 | 300 | 220 | 25 |

Nota: fornito completo di 4 viti DIN 7984 - Tutti i diametri sono disponibili, su richiesta, anche in INOX AISI316 per ordinare, sostituire la «I» con la "Y" al codice standard.

Note: supplied with 4 screws DIN 7984 All diameters are available also with AISI 316 stainless steel, to order indicate «Y» instead of «I» in the standard code number.

| Condizioni di fornitura Supply conditions | 00 | Senza viti Without screws | 01 | Con viti With screws |
|--|----|------------------------------|----|-------------------------|
|--|----|------------------------------|----|-------------------------|

CERNIERA INTERMEDIA PER CILINDRI TIRANTATI (MT4) INTERMEDIATE HINGE FOR TIE RODS CYLINDERS (MT4)

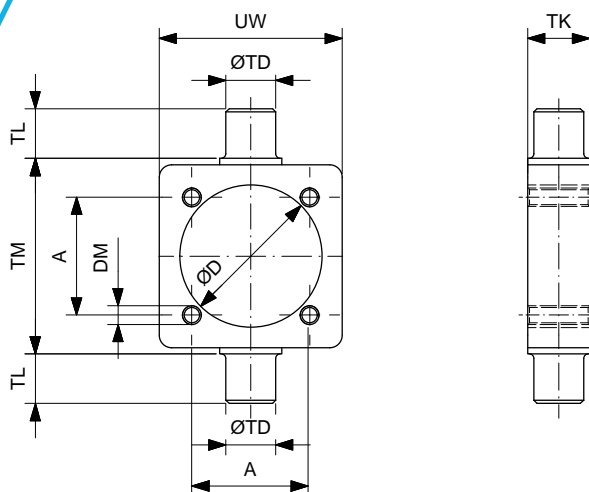


Materiale Acciaio inox AISI304
Material 304 stainless steel

| CODICE/CODE | Ø mm | A | TM | TL | TK | ØTD | ØD | ØD1 | UW | CH | DADO/NUT* |
|-------------|------|------|-----|----|----|-----|-----|-------|-----|-----|-----------|
| CIT32I | 32 | 32.5 | 50 | 12 | 15 | 12 | 37 | 6.25 | 46 | 2.5 | - |
| CIT40I | 40 | 38 | 63 | 16 | 20 | 16 | 46 | 6.25 | 59 | 2.5 | - |
| CIT50I | 50 | 46.5 | 75 | 16 | 20 | 16 | 56 | 8.25 | 69 | 3 | - |
| CIT63I | 63 | 56.5 | 90 | 20 | 25 | 20 | 69 | 8.25 | 84 | 3 | - |
| CIT80I | 80 | 72 | 110 | 20 | 25 | 20 | 87 | 10.25 | 102 | 4 | - |
| CIT100I | 100 | 89 | 132 | 25 | 30 | 25 | 107 | 10.25 | 125 | 4 | - |
| CIT125I | 125 | 110 | 160 | 25 | 32 | 25 | 133 | 12.25 | 155 | 5 | - |
| CIT160I | 160 | 140 | 200 | 32 | 40 | 32 | 170 | 16.25 | 190 | - | M16X2 |
| CIT200I | 200 | 175 | 250 | 32 | 40 | 32 | 214 | 16.25 | 240 | - | M16X2 |

Nota: tutti i diametri sono disponibili, su richiesta, anche in INOX AISI316 per ordinare, sostituire la «I» con la «Y» al codice standard.
Note: all diameters are available also with AISI 316 stainless steel, to order indicate «Y» instead of «I» in the standard code number.

CERNIERA INTERMEDIA FILETTATA PER CILINDRI TIRANTATI (MT4) INTERMEDIATE HINGE THREADED FOR TIE RODS CYLINDERS (MT4)



Materiale Acciaio inox AISI304
Material 304 stainless steel

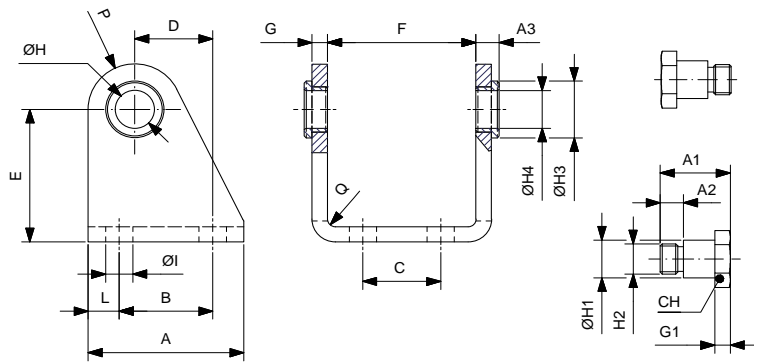
| CODICE/CODE | Ø mm | A | TM | TL | TK | ØTD | ØD | ØD1 | UW | CH |
|-------------|------|------|-----|----|----|-----|-----|-----|-----|-----|
| CIF32I | 32 | 32.5 | 50 | 12 | 15 | 12 | 37 | M6 | 46 | 2.5 |
| CIF40I | 40 | 38 | 63 | 16 | 20 | 16 | 46 | M6 | 59 | 2.5 |
| CIF50I | 50 | 46.5 | 75 | 16 | 20 | 16 | 56 | M8 | 69 | 3 |
| CIF63I | 63 | 56.5 | 90 | 20 | 25 | 20 | 69 | M8 | 84 | 3 |
| CIF80I | 80 | 72 | 110 | 20 | 25 | 20 | 87 | M10 | 102 | 4 |
| CIF100I | 100 | 89 | 132 | 25 | 30 | 25 | 107 | M10 | 125 | 4 |
| CIF125I | 125 | 110 | 160 | 25 | 32 | 25 | 133 | M12 | 155 | 5 |
| CIF160I | 160 | 140 | 200 | 32 | 40 | 32 | 170 | M16 | 190 | - |
| CIF200I | 200 | 175 | 250 | 32 | 40 | 32 | 214 | M16 | 240 | - |

Nota: l'utilizzo della cerniera sui cilindri Ø160-200 è consentito solo in abbinamento a cilindri con tiranti interamente filettati. L'accessorio viene fornito provvisto di appositi dadi per il posizionamento e fissaggio (*) - Tutti i diametri sono disponibili, su richiesta, anche in INOX AISI316.
Per ordinare, sostituire la «I» con la «Y» al codice standard.

Note: it is possible to use the Ø160-200 intermediate hinge only combined with cylinders equipped with threaded tie rods. The accessory is supplied with nuts for positioning and fixing (*) - All diameters are available also with AISI 316 stainless steel, to order indicate «Y» instead of «I» in the standard code number.

ACCESSORI DI FISSAGGIO MOUNTING ACCESSORIES

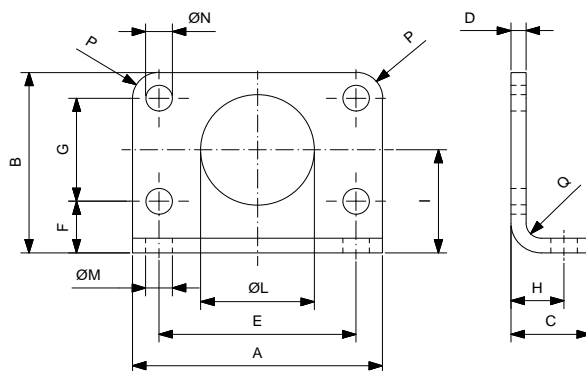
CERNIERA CP95 CP95 HINGE



Materiale Perni e corpo in acciaio inox AISI304 bussole in delrin
Material AISI304 stainless steel body and pivots delrin bushes

| CODICE/CODE | Ømm | A | A1 | A2 | A3 | B | C | D | E | F | G | G1 | ØH | ØH1 | H2 | ØH3 | H4 | CH | ØI | L | P | Q |
|-------------|-----|----|------|----|-----|----|----|----|----|------|---|----|----|-----|---------|-----|----|----|----|----|----|---|
| COC32I | 32 | 40 | 18 | 6 | 6 | 24 | 20 | 20 | 35 | 38.1 | 4 | 4 | 12 | 10 | M8x1 | 15 | 10 | 13 | 7 | 8 | 12 | 4 |
| COC40I | 40 | 50 | 21.6 | 7 | 7 | 30 | 28 | 27 | 40 | 46.1 | 5 | 5 | 15 | 12 | M10x1 | 20 | 12 | 17 | 9 | 10 | 13 | 5 |
| COC50I | 50 | 54 | 26.4 | 9 | 8.5 | 34 | 36 | 30 | 45 | 57.1 | 6 | 6 | 18 | 14 | M12x1.5 | 23 | 14 | 19 | 9 | 10 | 14 | 6 |
| COC63I | 63 | 65 | 31.5 | 13 | 8.5 | 35 | 42 | 34 | 50 | 70.1 | 6 | 6 | 20 | 16 | M14x1.5 | 23 | 16 | 19 | 9 | 15 | 16 | 6 |

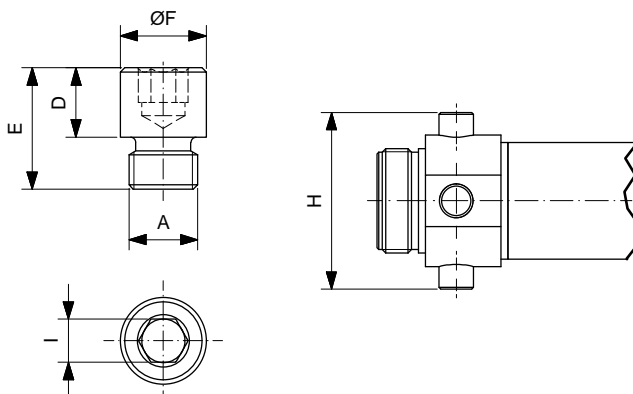
PIEDINO FLANGIA CP95 CP95 FOOT FLANGE



Materiale Acciaio inox AISI304
Material 304 stainless steel

| CODICE/CODE | Ømm | A | B | C | D | E | F | G | H | I | ØL | ØM | ØN | P | Q | R |
|-------------|-----|----|----|----|---|----|----|----|----|----|----|----|----|----|---|---|
| APC32I | 32 | 66 | 49 | 21 | 4 | 52 | 14 | 28 | 14 | 28 | 30 | 7 | 7 | 7 | 4 | 2 |
| APC40I | 40 | 80 | 58 | 30 | 5 | 60 | 18 | 30 | 20 | 33 | 38 | 9 | 9 | 10 | 5 | 2 |
| APC50I | 50 | 90 | 70 | 30 | 6 | 70 | 20 | 40 | 20 | 40 | 45 | 9 | 9 | 10 | 6 | 2 |
| APC63I | 63 | 96 | 80 | 30 | 6 | 76 | 20 | 50 | 20 | 45 | 45 | 9 | 9 | 10 | 6 | 2 |

COPPIA DI PERNI CP95 CP95 PAIR PIVOTS



Materiale Acciaio inox AISI304
Material 304 stainless steel

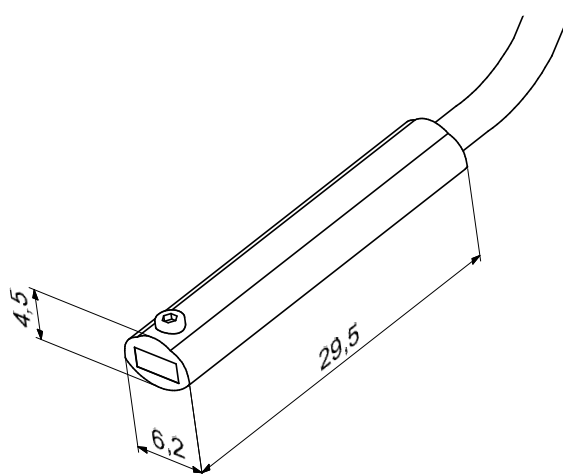
| CODICE/CODE | Ø mm | A | D | E | ØF | I | H |
|-------------|------|---------|-----|------|----|---|----|
| CPC32I | 32 | M8x1 | 8 | 14 | 10 | 5 | 51 |
| CPC40I | 40 | M10x1 | 9.5 | 16.5 | 12 | 6 | 61 |
| CPC50I | 50 | M12x1.5 | 11 | 20 | 14 | 6 | 75 |
| CPC63I | 63 | M14x1.5 | 13 | 28 | 16 | 8 | 92 |

COME ORDINARE | HOW TO ORDER

| Codice Code | Condizioni di fornitura Supply condition | Confezionamento Packaging |
|----------------|---|---|
| CRF32S | 00 | S |
| | <p>Nota: fare riferimento alle condizioni specificate per i singoli accessori. Se non indicate, utilizzare «00» per condizioni standard.</p> <p>Note: refer to the specified conditions for every accessory. If not indicated, use «00», for standard conditions.</p> | <p>s = confezione singola / single packaging</p> <p>m = confezione unificata per componente / unified by components packaging</p> |

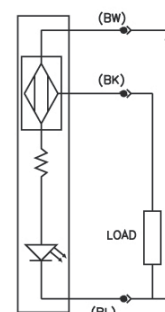
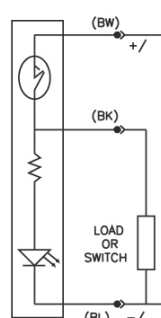
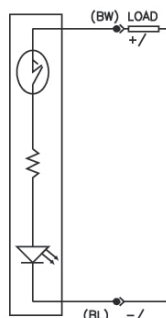
SENSORI ED ACCESSORI SENSORS AND ACCESSORIES

SENSORI SENSORS



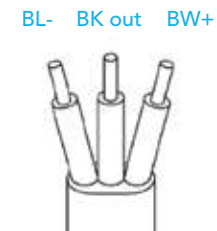
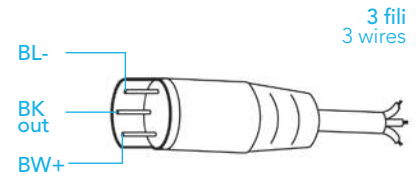
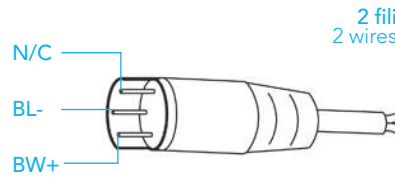
| Serie Series | ZS ZS | | |
|--|--|--|--|
| Interruttore con cavo Switch with cable | ZS3201EL | ZS3300EL | ZS4300EL |
| Interruttore con connettore M8 Switch with connector M8 | ZS3210EL | ZS3310EL | ZS4310EL |
| Tipo Sensore Sensor Type | Contatto reed N.O. Reed switch N.O. | Contatto reed PNP N.O. Reed switch PNP N.O. | Magneto-resistivo PNP N.O. Magneto-resistive PNP N.O. |
| Tensione di alimentazione Power supply | 3÷30 V AC/DC | | 3÷30 V DC |
| Corrente di commutazione Switching current | 0.2 A | | |
| Potenza (carico ohmico) Power (ohmic load) | 6 W | | |
| Caduta di tensione On voltage drop | ≤ 3 V | - | ≤ 1 V |
| Tempo commutazione "ON" Response time "ON" | 0.5 ms | | 0.8 μs |
| Tempo commutazione "OFF" Response time "OFF" | 0.1 ms | | 0.3 μs |
| Punto di lavoro nominale Nominal operate point | 20÷25 AT | | 40 Gauss (34-46) Gauss |
| Differenza ON-OFF ON-OFF differential | 5÷10 AT | | 5±15 Gauss |
| Temperatura lavoro Operating temperature | -10 ÷ +70°C | | |
| Frequenza di lavoro Operating frequency | max 500 Hz | | max 200 KHz |
| Vita elettrica Life time | 107 imp | | 109 imp |
| Protezione contro inversione di polarità Polarity reversal protection | SI / YES | | |
| Protezione contro corto-circuito Short circuit protection | - | | |
| Grado di protezione Environmental protection degree | IP 67 | | |

Configurazioni circuitali Wiring schematics



CAVI PER SENSORI SENSORS CABLES

CONNETTORE M8 M8 CONNECTOR



| | |
|--|--|
| Lunghezza cavo standard Standard cable length | 2.5 m (cavo diretto / flying connector with cable) 0.3 m (cavo con connettore / plug connector with cable) |
| Conduttori Conductors | 0.14 mm ² / AWG 26 / (36x 0.07 mm ²) |
| Isolamento Isolation | PVC |
| Guaina Sheath | PVC ø 2.7 mm |
| Test di fiamma Flame test | V2 |
| Certificazione Certification | CEI EN 60529; CEI EN 60947-5-2; CEI EN 61000-6-2; CEI EN 61000-6-3; CEI EN 55022; CEI EN 61000-4-2; CEI EN 61000-4-3 CEI EN 61000-4-4; CEI EN 65000-4-5; CEI EN 61000-4-8; CEI EN 61000-4-11; CEI EN 61000-4-6 |

Circuiti di protezione per sensori Protection circuit for switches

La commutazione di carichi induttivi da parte dei contatti REED produce un elevato picco di tensione al momento della disinserzione. Per tale motivo, al fine di prevenire eventuali scariche dielettriche oppure un arco voltaico, è necessario introdurre un circuito di protezione.

Questo può essere:

- un circuito R-C in parallelo al finecorsa se alimentato in V dc – (vedi Fig.1)
- un diodo in parallelo al carico se alimentato in V dc – (vedi Fig.2)
- n°2 diodi Zener in parallelo al carico se alimentato in V ac/dc – (vedi Fig.3)
- un varistore (VDR) in parallelo al carico se alimentato in V ac/dc – (Fig.4)

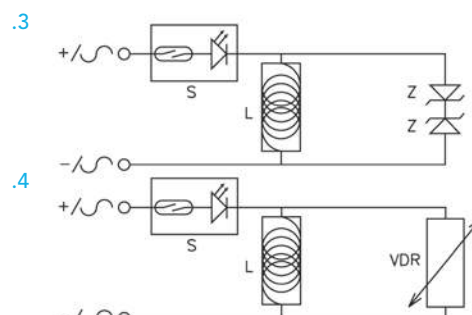
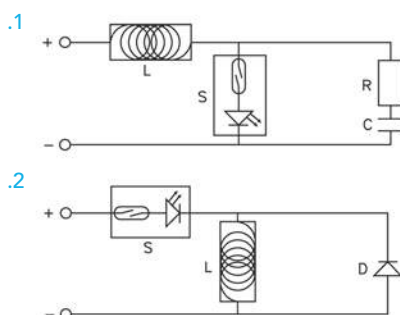
La commutazione di carichi capacitivi o l'impiego di cavi con lunghezza maggiore a metri 10 produce picchi di corrente al momento dell'inserzione. Perciò è necessario prestare attenzione garantendo la minima corrente necessaria per pilotare il sensore. (10÷20 mA). Switch with cable

The switching of inductive loads made by REED produces a high voltage peak during the drop-out. In order to prevent dielectric discharges or voltaic arcs, you have to introduce a protection circuit.

It can be:

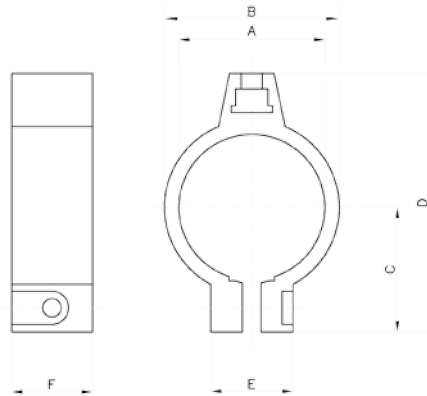
- a R-C circuit in parallel to the switch in case of V dc supply – (Img.1)
- a diode in parallel to the load in case of V dc supply – (Img.2)
- n°2 Zener diodes in parallel to the load with V ac/dc supply – (Img.3)
- a varistor (VDR) in parallel to the load with V ac/dc supply – (Img.4)

The switching of capacitive loads or the use of cables longer than 10 meters produces current peaks during the connection. For this reason you have to introduce a protection resistance near the switch on the brown wire. Please, pay attention in granting the minimum necessary current to the switch. (10÷20 mA)

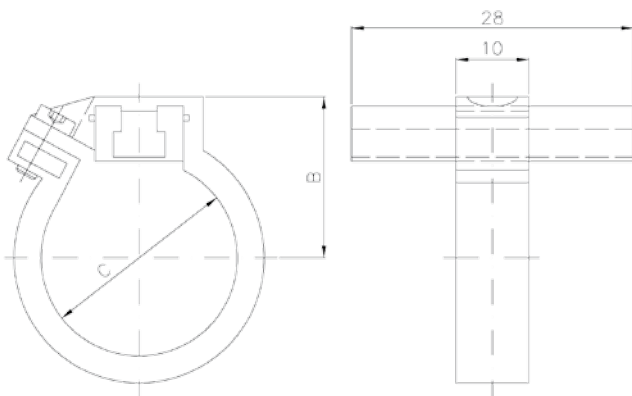


SENSORI ED ACCESSORI SENSORS AND ACCESSORIES

FISSAGGI PER SENSORI - CILINDRI TONDI MOUNTING PARTS FOR SENSORS - ROUND CYLINDERS

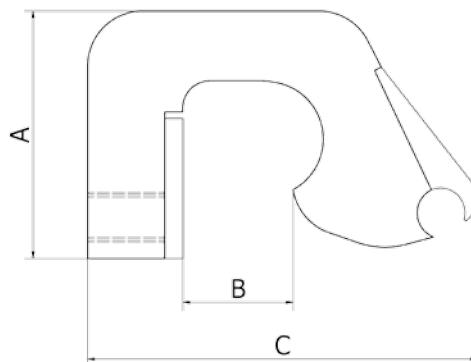


| CODICE/CODE | Ø mm | A | B | C | D | E | F |
|-------------|------|--------|------|------|------|------|---|
| NT-08 | 8 | Ø 9.3 | 12.3 | 11.1 | 23.9 | 12.3 | 9 |
| NT-10 | 10 | Ø 11.3 | 14.3 | 12.2 | 25.9 | 12.3 | 9 |
| NT-12 | 12 | Ø 13.3 | 16.3 | 13.2 | 28 | 12.3 | 9 |
| NT-16 | 16 | Ø 17.3 | 20.3 | 15.3 | 32.1 | 12.3 | 9 |
| NT-20 | 20 | Ø 21.3 | 24.3 | 17.4 | 36.2 | 14 | 9 |
| NT-25 | 25 | Ø 26.5 | 29.5 | 20 | 41.4 | 14 | 9 |



| CODICE/CODE | Ø mm | B | C |
|-------------|------|----|------|
| NT-32 | 32 | 27 | 33.6 |
| NT-40 | 40 | 31 | 41.6 |
| NT-50 | 50 | 37 | 52.4 |
| NT-63 | 63 | 42 | 65.4 |

FISSAGGI PER SENSORI - CILINDRI TIRANTATI
MOUNTING PARTS FOR SENSORS - TIE ROD CYLINDERS



| CODICE/CODE | Ø mm | A | B | C |
|-------------|---------|----|------|----|
| NT-3263XR | 32-63 | 14 | 9 | 22 |
| NT-80100XR | 80-100 | 19 | 12 | 34 |
| NT-125XR | 125 | 21 | 14 | 33 |
| NT-160200XR | 160-200 | 26 | 18 | 42 |
| NT-250XR | 250 | 26 | 20.5 | 42 |
| NT-320XR | 320 | 26 | 25.5 | 42 |

COPERTURA PER CAVA SENSORE
COVERING FOR SENSOR SLOT



| CODICE/CODE | MATERIALE/MATERIAL | COLORE/COLOR | LUNGHEZZA/LENGHT |
|-------------|--------------------|--------------|------------------|
| XLB-11 | PLASTICA/PLASTIC | BLU/BLUE | 0.5 |