

UNITÀ DI GUIDA PER CILINDRI GUIDE UNITS FOR CYLINDERS



Unità di guida per cilindri ISO 15552 e ISO 6432.
 Disegnate per garantire elevate resistenze ai carichi laterali, effetto anti rotazione ed allineamento ottimale.
 Caratterizzate da elevata precisione di posizionamento.
 Disponibili in versione con boccole in bronzo per elevati carichi o con manicotti a sfere per elevate velocità.

Guide units for ISO 15552 and ISO 6432 cylinders.
 Designed to ensure high resistance to side loads, non-rotating effect and optimal alignment.
 Featuring high positioning precision.
 Available with bronze slide bearings for high loads or with ball bearings for high speeds.

INFORMAZIONI TECNICHE TECHNICAL INFORMATION

Piastra Plate	Alluminio anodizzato Anodized Aluminium
Corpo Body	Alluminio anodizzato Anodized Aluminium
Boccola guida Guiding bush	Bronzo sinterizzato Sintered bronze
Mani a sfera Ball bushing	Acciaio Steel
Guarnizioni Seals	NBR
Stelo Piston rod	Acciaio Steel
Temperatura di impiego Working temperature	-20°C +80°C con aria secca -20°C +80°C with dry air

CHIAVI DI CODIFICA CYLINDERS KEY CODE

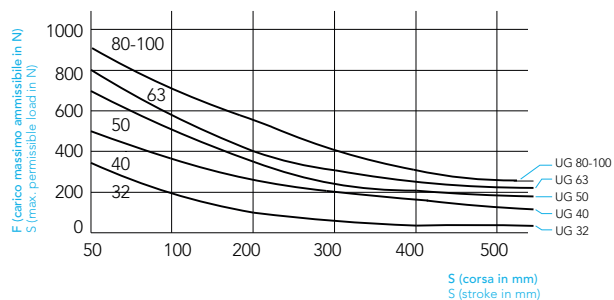
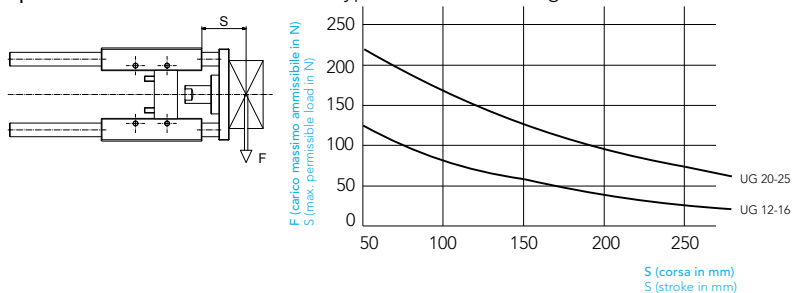
Versione Version		Diametro Diameter	Corsa Stroke
NRB	Unità di guida ad H con boccole H type guide unit with slide bearings	12-16	0...500
NRS	Unità di guida ad H con manicotti a sfere H type guide unit with ball bearings	20	
NRU	Unità di guida ad U con boccole U type guide unit with slide bearings	25	
		32	
		40	
		50	
		63	
		80	
		100	

CORSE STANDARD STANDARD STROKES

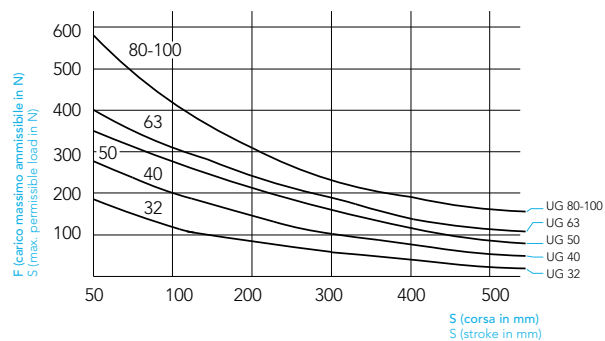
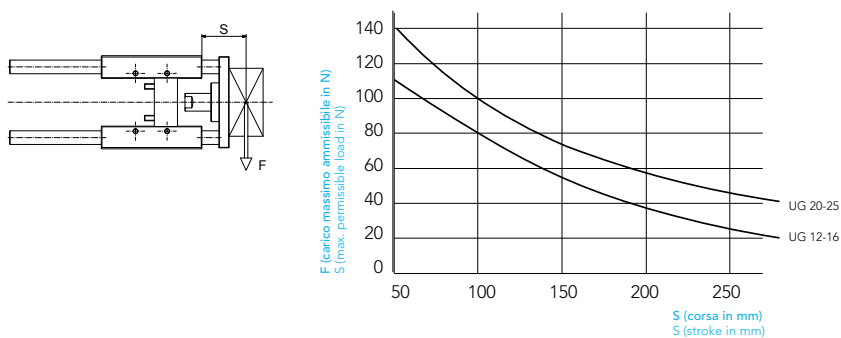
Ø (mm)	Corse standard (mm) Standard strokes (mm)							
12-16	50	100	160	200	250	320	400	500
20	50	100	160	200	250	320	400	500
25	50	100	160	200	250	320	400	500
32	50	100	160	200	250	320	400	500
40	50	100	160	200	250	320	400	500
50	50	100	160	200	250	320	400	500
63	50	100	160	200	250	320	400	500
80	50	100	160	200	250	320	400	500
100	50	100	160	200	250	320	400	500
125	50	100	160	200	250	320	400	500

CARICHI MASSIMI MAXIMUM LOADS

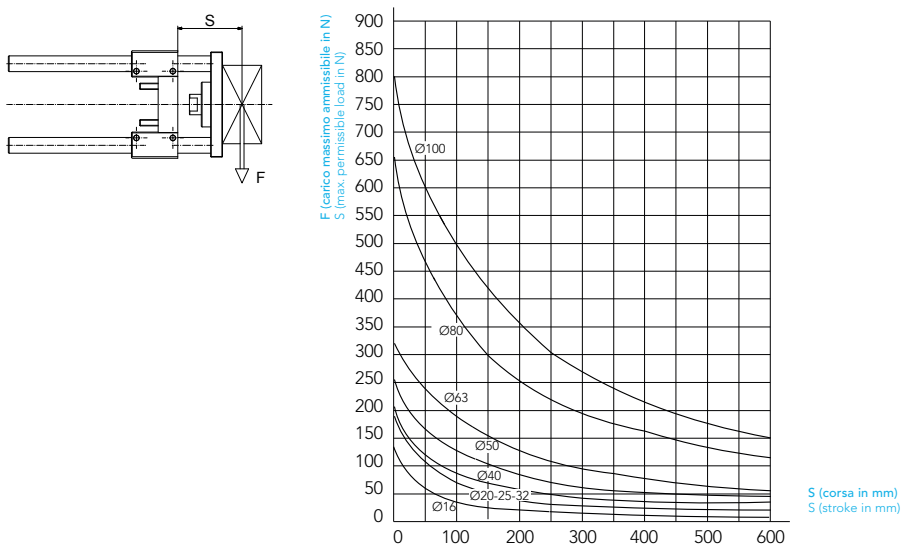
Tipo H con bussole in bronzo - H type with slide bearings



Tipo H con cuscinetti a ricircolo di sfere - H Type with ball bushings



Tipo U con bussole in bronzo - U Type with slide bearings

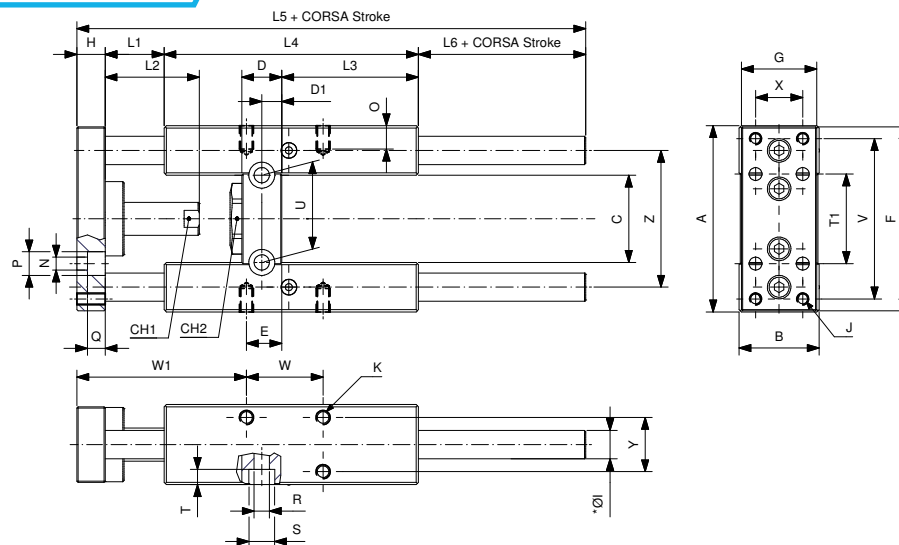


UNITÀ DI GUIDA PER CILINDRI GUIDE UNITS FOR CYLINDERS

UNITÀ DI GUIDA AD H Ø12-25 PER CILINDRI ISO 6432 GUIDING UNIT TYPE H Ø12-25 FOR ISO 6432 CYLINDERS

NRSØ/...

NRBØ/...



Ø mm	A	B	C	CH1	CH2	D	D1	E	F	G	H	Ø1	Ø2	J	K	L1	L2	L3
12-16	69	30	30	8	24	12	6	8	66	29	10	10	8	M4	M4	25	18	46
20	79	34	37	12	27	17	8.5	15	78	32	12	12	10	M5	M6	25	40	58
25	79	34	37	12	27	17	8.5	15	78	32	12	12	10	M5	M6	25	40	58

Ø mm	L4	L5	L6	N	O	P	Q	R	S	T	T1	U	V	W	W1	X	Y	Z
12-16	68	123.5	20.5	4.5	6	8	4.5	5.5	9	5.5	32	24	58	18	49	18	22	49.5
20	108	166	21	5.5	9	10	7.5	6.5	11	6.5	38	38	68	32.5	20	72	23	58
25	108	166	21	5.5	9	10	7.5	6.5	11	6.5	38	38	68	32.5	20	72	23	58

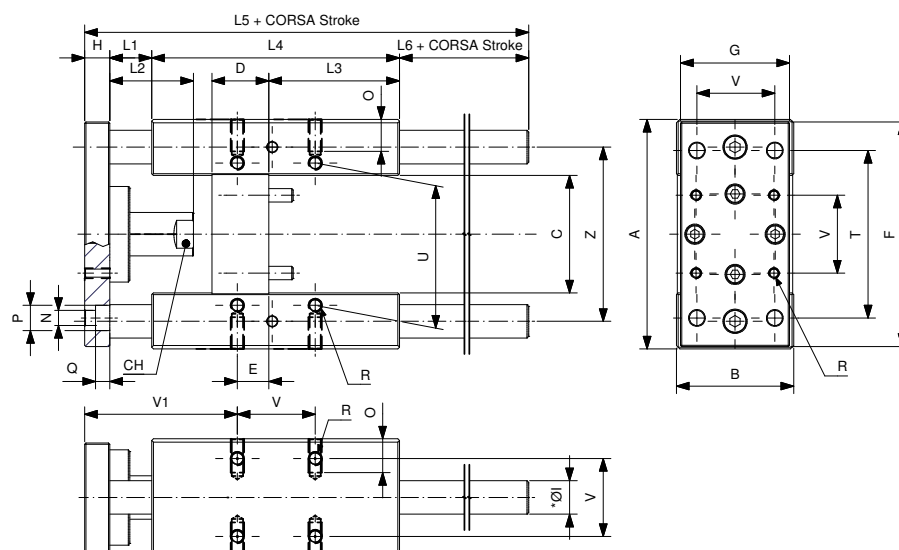
*Ø1 = Versione con bussole di bronzo - Slide bearing version

*Ø2 = Versione a ricircolo di sfere - Ball bearing version

UNITÀ DI GUIDA AD H Ø32-100 PER CILINDRI ISO 15552 GUIDING UNIT TYPE H Ø32-100 FOR ISO 15552 CYLINDERS

NRSØ/...

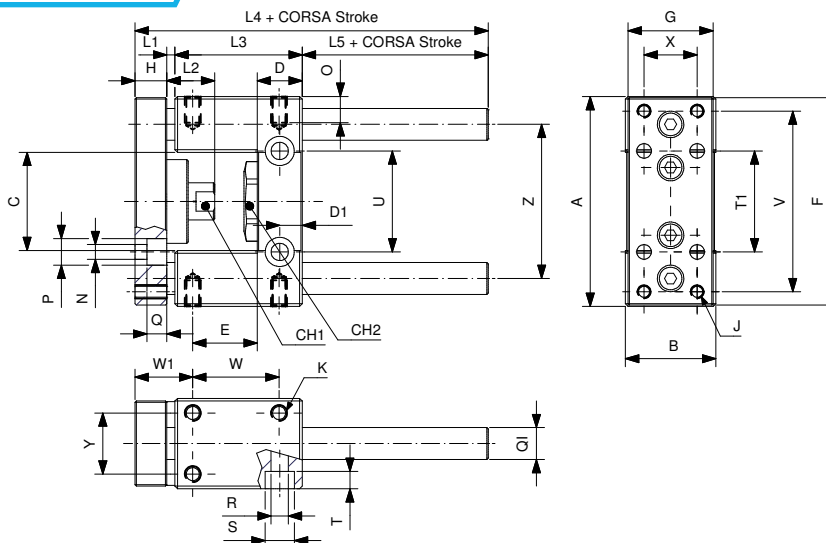
NRBØ/...



Ø mm	A	B	C	CH	D	E	F	G	H	Ø1	L1	L2	L3	L4	L5	L6	N	O	P	Q	R	T	U	V	V1	Z
32	97	49	51	15	24	4.3	93	45	12	12	25	42	75	125	187	25	6.6	12	11	6.5	M6	78	61	32.5	82.7	74
40	115	58	58.2	15	28	11	112	55	12	16	25	42	80	140	207	30	6.6	12	11	6.5	M6	84	69	38	86	87
50	137	70	70.2	20	34	18.8	134	65	15	20	25	50	78	148	223	35	9	16	15	8.5	M8	100	85	46.5	91.2	104
63	152	85	85.2	20	34	15.3	147	80	15	20	25	50	106	178	243	25	9	16	15	9	M8	105	100	56.5	96.7	119
80	189	105	105.5	26	50	25	180	100	20	25	25	50	111	195	267	27	11	20	18	11	M10	130	130	72	104	148
100	213	130	130.5	26	55	30	206	120	20	25	25	50	128	218	290	27	11	20	18	11	M10	150	150	89	105	173

UNITÀ DI GUIDA AD U Ø12-25 PER CILINDRI ISO 6432
GUIDING UNIT TYPE U Ø12-25 FOR ISO 6432 CYLINDERS

NRUØ/...

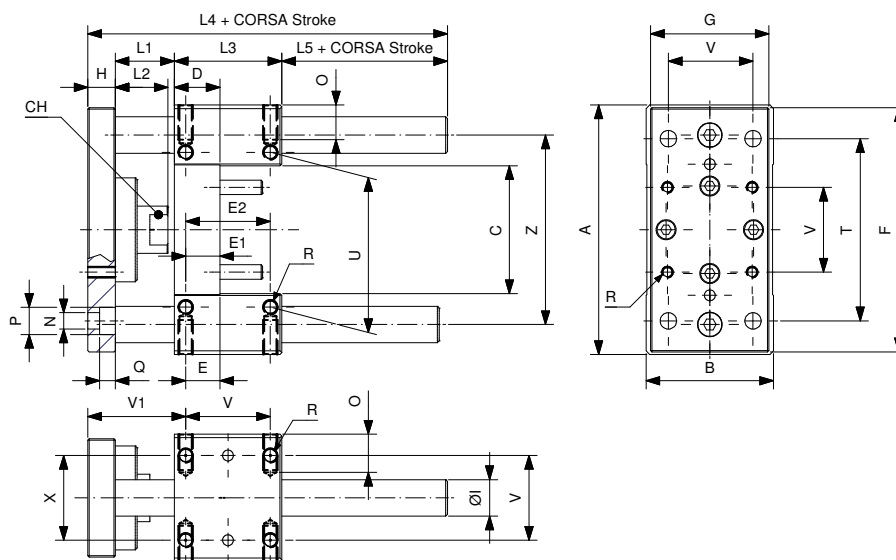


Ø mm	A	B	C	CH1	CH2	D	D1	E	F	G	H	ØI	J	K	L1	L2	L3
12-16	69	30	30	8	24	12	6	19.5	66	29	10	10	M4	M4	3	15	38
20	79	34	37	12	27	17	8.5	24.25	78	32	12	12	M5	M6	3	18	48
25	79	34	37	12	27	17	8.5	24.25	78	32	12	12	M5	M6	3	18	48

Ø mm	L4	L5	N	O	P	Q	R	S	T	T1	U	V	W	W1	X	Y	Z
12-16	66.5	15.5	4.5	6	7.5	4.5	5.5	9	5.5	32	24	58	25	19.5	18	22	49.5
20	83	20	5.5	9	10	7.5	6.5	11	6.5	38	38	68	32.5	21.75	20	23	58
25	83	20	5.5	9	10	7.5	6.5	11	6.5	38	38	68	32.5	21.75	20	23	58

UNITÀ DI GUIDA AD U Ø32-100 PER CILINDRI ISO 15552
GUIDING UNIT TYPE U Ø32-100 FOR ISO 15552 CYLINDERS

NRUØ/...



Ø mm	A	B	C	CH	D	E	E1	E2	F	G	H	ØI	L1	L2	L3	L4	L5	N	O	P	Q	R	T	U	V	V1	Z
32	97	49	51	15	17	9.25	9.25	32.5	93	45	12	12	42	25	48	120	18	6.6	12	11	6.5	M6	78	61	32.5	61.75	74
40	115	58	58.2	15	21	11	11	38	112	55	12	16	43	25	58	130	17	6.6	12	11	6.5	M6	84	69	38	65	87
50	137	70	70.2	20	25	18.8	18.8	46.5	134	65	15	20	49	29	59	143	20	9	16	15	8.5	M8	100	85	46.5	70.2	104
63	152	85	85.2	20	25	15.3	15.3	56.5	147	80	15	20	49	29	76	161	21	9	16	15	9	M8	105	100	56.5	73.7	119
80	189	105	105.5	26	34	25	14	50	180	100	20	25	53	27	90	193	30	11	20	18	11	M10	130	130	72	82	148
100	213	130	130.5	26	39	28.5	19	70	206	120	20	25	54	27	110	214	30	11	20	18	11	M10	150	150	89	84.5	173