

CILINDRI TONDI INOX CPO4 Ø32-40 STAINLESS STEEL CPO4 ROUND CYLINDERS Ø32-40



Cilindri tondi Ø32-40.

Altamente resistenti con testate cianfrinate e interamente realizzati in acciaio inox.

Disponibili in versione magnetica o non, a stelo singolo o passante.

Ø32-40 round cylinders.

Highly resistant with crimped covers and entirely built in stainless steel barrel.

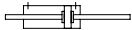
Available with or without magnet, single or through piston rod.

VERSIONE VERSION

CDE



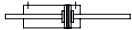
CDEP



CDEM



CDEMP



INFORMAZIONI TECNICHE TECHNICAL INFORMATION

Testate Covers	Acciaio inox AISI304 AISI304 Stainless steel
Tubo Tube	Acciaio inox AISI304 AISI304 Stainless steel
Pistone Piston	Alluminio Aluminium
Guarnizioni Seals	Poliuretano - NBR Polyurethane - NBR
Boccola guida Guiding bush	Bronzo sinterizzato Sintered bronze
Stelo Piston rod	Acciaio inox AISI316 AISI316 Stainless steel
Pressione MAX MAX pressure	10 bar
Temperatura di impiego Working temperature	-20°C +80°C con aria secca -20°C +80°C with dry air
Fluido Working fluid	Aria compressa filtrata e lubrificata e non Filtered and lubricated or not compressed air

CHIAVI DI CODIFICA CYLINDERS KEY CODE

CDEMI		32	100	D	VG
Versione Version	Diametro Diameter	Corsa Stroke	Tipo costruttivo Design Type	Guarnizioni Seals	
CDEI Doppio effetto non magnetico Double acting non magnetic	32	0...1000	D Versione standard Standard version	-	Standard
CDEMI Doppio effetto magnetico Double acting magnetic	40			V	Guarnizioni FKM FKM seals
CDEPI Doppio effetto stelo passante non magnetico Double acting through rod non magnetic				VG	Guarnizione stelo FKM FKM rod seal
CDEMPI Doppio effetto stelo passante magnetico Double acting through rod magnetic					


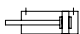



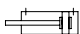

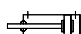
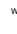
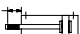
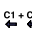
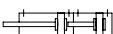


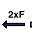
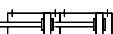

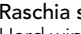
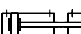
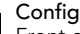
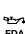


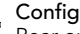
CORSE STANDARD STANDARD STROKES

Ø (mm)	Corse standard (mm) Standard strokes (mm)											
	10	25	40	50	80	100	125	160	200	250	300	
32	10	25	40	50	80	100	125	160	200	250	300	
40	10	25	40	50	80	100	125	160	200	250	300	

FORZE TEORICHE A 6 BAR THEORETICAL FORCES AT 6 BAR

Ø (mm)	Forza di spinta (N) Thrust force (N)	Forza di trazione (N) Traction force (N)
32	482	414
40	754	633

VARIANTI VARIANTS

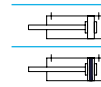
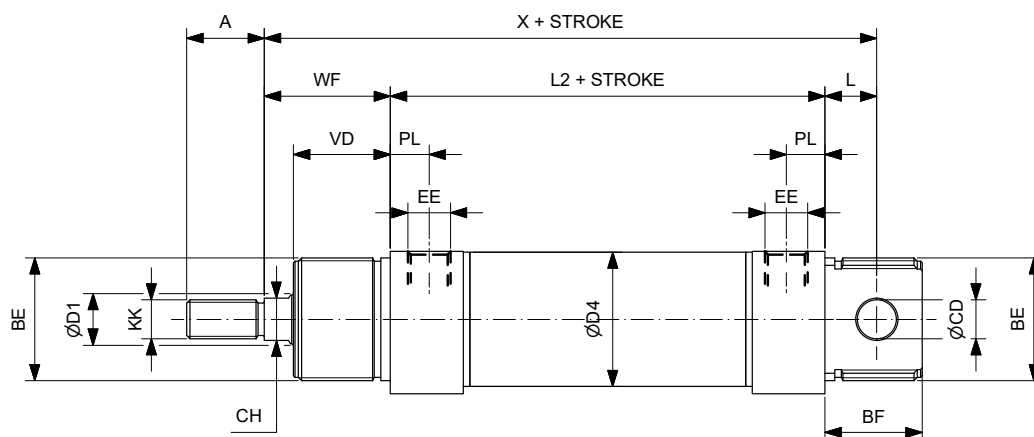
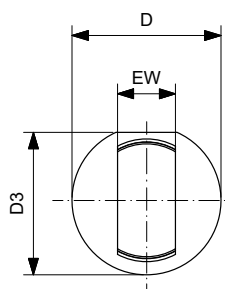
Simbolo Symbol	Caratteristiche Features	Simbolo Symbol	Caratteristiche Features
 	Resistente alle alte temperature -10...+150°C Heat-resistant -10...+150°C	 	Filettature e steli su richiesta Custom made thread or piston rod
 	Resistente alle basse temperature -40...+80°C Low temperature resistant -40...+80°C	 	Guarnizione stelo ad elevata resistenza chimica Rod seal with increased chemical resistance
 	Stelo prolungato Piston rod extension	 	Configurazione tandem a più posizioni Multi position configuration
 	Basso attrito Low friction	 	Configurazione tandem a doppia spinta Double thrust tandem configuration
 	Raschia stelo duro in poliestere Hard wiper in polyester	 	Configurazione tandem contrapposti anteriore Front opposed tandem configuration
 	Lubrificazione FDA FDA lubrication	 	Configurazione tandem contrapposti posteriore Rear opposed tandem configuration

CILINDRI TONDI INOX CPO4 Ø32-40 STAINLESS STEEL CPO4 ROUND CYLINDERS Ø32-40

DOPPIO EFFETTO
DOUBLE ACTING

CDEIØ/...D

CDEMIØ/...D

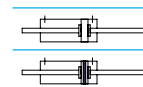
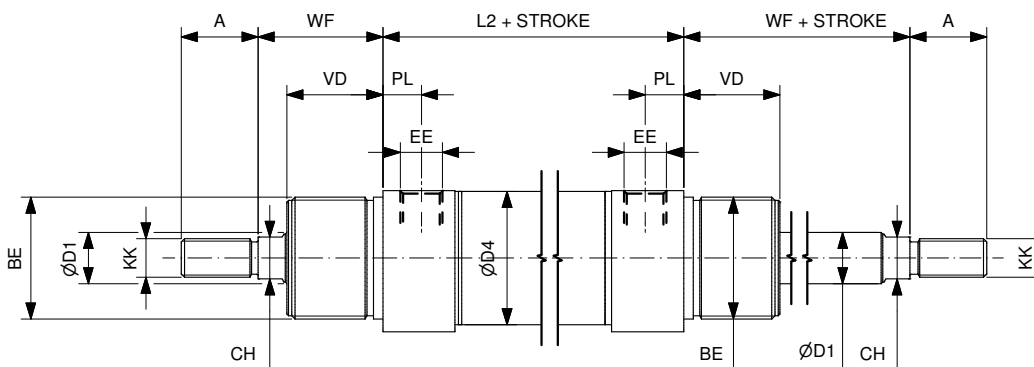
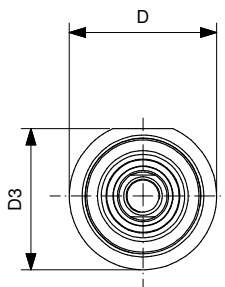


Ømm	ØD1	KK	A	CH	BE	WF	VD	PL	EE	X	L2	L	ØD4	ØCD	BF	D	EW	D3
32	12	M10X1.25	22	10	M30X1.5	34	26	9	1/8"G	117.5	69.5	14	33.6	10	26	38	16	36.5
40	16	M12X1.25	24	13	M38X1.5	39	30	12	1/4"G	139.5	84.5	16	41.6	12	30	46	18	44

DOPPIO EFFETTO PASSANTE
DOUBLE ACTING THROUGH PISTON ROD

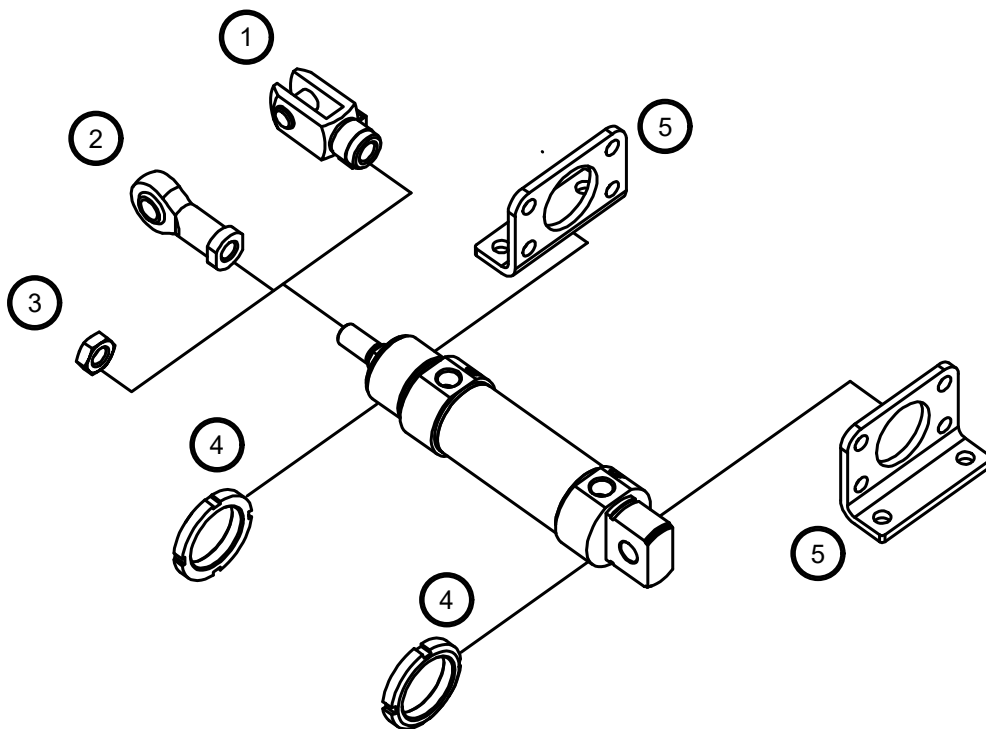
CDEPIØ/...D

CDEMPIØ/...D



Ømm	ØD1	KK	A	CH	BE	WF	VD	PL	EE	L2	ØD4	D	D3
32	12	M10X1.25	22	10	M30X1.5	34	26	9	1/8"G	69.5	33.6	38	36.5
40	16	M12X1.25	24	13	M38X1.5	39	30	12	1/4"G	84.5	41.6	46	44

ACCESSORI DI FISSAGGIO
MOUNTING ACCESSORIES



Descrizione Description	Acciaio inox Stainless steel
1 Forcella / Clevis	147
2 Testa a snodo / Rod end	148
3 Dado per stelo / Piston rod nut	146
4 Ghiera / Slotted nut	147
5 Piedino flangia / Foot flange	154