

CILINDRI COMPATTI ISO 21287 INOX Ø20-100 ISO 21287 STAINLESS STEEL COMPACT CYLINDERS Ø20-100



Cilindri compatti a norma ISO 21287 in versione interamente inox. Disponibili in versione magnetica, doppio effetto, a stelo singolo o passante, anti rotazione o non. Compatibile con la gamma di accessori ISO 15552. Su richiesta sono fornibili in varie esecuzioni speciali.

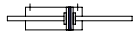
ISO 21287 compact cylinders, stainless steel version. Available with magnet, double acting, single or through piston rod, non-rotating or not. Compatible with ISO 15552 mounting accessories. Special versions are available.

VERSIONE VERSION

CDEM



CDEMP



Su richiesta disponibile in acciaio AISI316
AISI316 stainless steel available on request

INFORMAZIONI TECNICHE TECHNICAL INFORMATION

Testate Covers	Acciaio inox AISI304/AISI316 AISI304 Stainless steel
Tubo Tube	Acciaio inox AISI304/AISI316 AISI304 Stainless steel
Guarnizioni Seals	Poliuretano - NBR Polyurethane - NBR
Boccola guida Guiding bush	Plastica Plastic
Stelo Piston rod	Acciaio inox AISI316 AISI316 Stainless steel
Tiranti Tie rods	Ø32-Ø100 acciaio inox AISI316 Ø32-Ø100 AISI316 stainless steel
Pressione MAX MAX pressure	10 bar
Temperatura di impiego Working temperature	-20°C +80°C con aria secca -20°C +80°C with dry air
Fluido Working fluid	Aria compressa filtrata e lubrificata e non Filtered and lubricated or not compressed air

CHIAVI DI CODIFICA CYLINDERS KEY CODE

CDEM		32	100	KS	F	V
Versione Version	Diametro Diameter	Corsa Stroke	Tipo costruttivo Design Type	Stelo Piston rod	Guarnizioni Seals	
CDEM Doppio effetto magnetico Double acting magnetic	20	0...2700	KS ISO 21287 standard AISI304 ISO 21287 standard AISI304	F Filettatura femmina Female thread	- Standard	
CDEMP Doppio effetto stelo passante magnetico Double acting through rod magnetic	25		KSR Antirotazione AISI304 Non-rotating AISI304	M Filettatura maschio Male thread	VG Guarnizione stelo FKM FKM rod seal	
	32		KY ISO 21287 standard AISI316 ISO 21287 standard AISI316			
	40		KYR Antirotazione AISI316 Non-rotating AISI316			
	50					
	63					
	80					
	100					

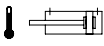
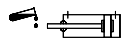
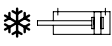
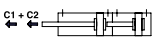
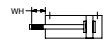
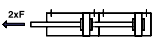
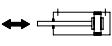
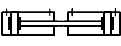
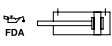

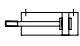
CORSE STANDARD STANDARD STROKES

Ø (mm)	Corse standard (mm) Standard strokes (mm)								
20	5	10	15	20	25	30	40	50	60
25	5	10	15	20	25	30	40	50	60
32	5	10	15	20	25	30	40	50	60
40	5	10	15	20	25	30	40	50	60
50	5	10	15	20	25	30	40	50	60
63	5	10	15	20	25	30	40	50	60
80	5	10	15	20	25	30	40	50	60
100	5	10	15	20	25	30	40	50	60

FORZE TEORICHE A 6 BAR THEORETICAL FORCES AT 6 BAR

Ø (mm)	Forza di spinta (N) Thrust force (N)	Forza di trazione (N) Traction force (N)
20	188	141
25	294	247
32	482	414
40	754	633
50	1178	989
63	1869	1681
80	3014	2720
100	4710	4416

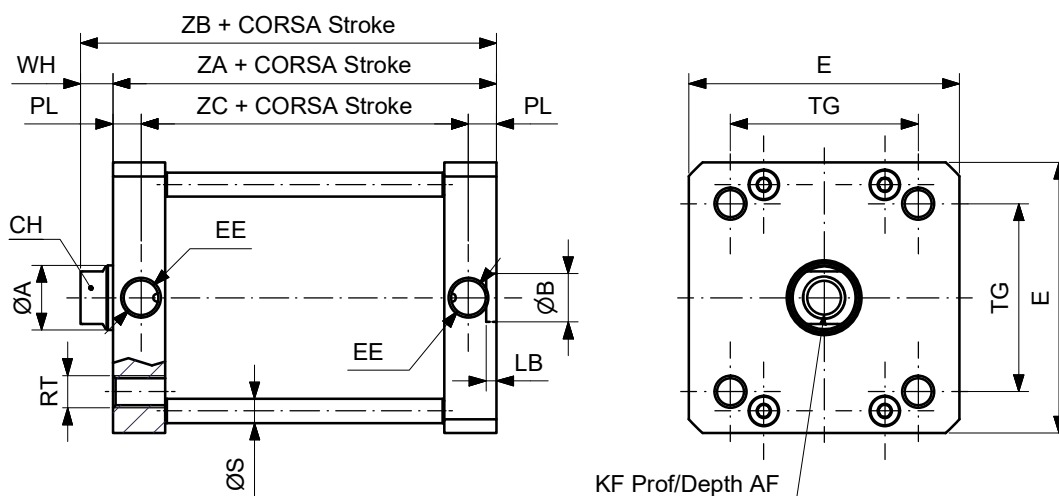
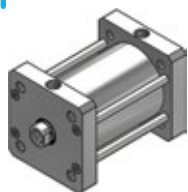
VARIANTI VARIANTS

Simbolo Symbol	Caratteristiche Features	Simbolo Symbol	Caratteristiche Features
	Resistente alle alte temperature -10...+150°C Heat-resistant -10...+150°C		Guarnizione stelo ad elevata resistenza chimica Rod seal with increased chemical resistance
	Resistente alle basse temperature -40...+80°C Low temperature resistant -40...+80°C		Configurazione tandem a più posizioni Multi position configuration
	Stelo prolungato Piston rod extension		Configurazione tandem a doppia spinta Double thrust tandem configuration
	Basso attrito Low friction		Configurazione tandem contrapposti anteriore Front opposed tandem configuration
	Lubrificazione FDA FDA lubrication		Configurazione tandem contrapposti posteriore Rear opposed tandem configuration
	Filettature e steli su richiesta Custom made thread or piston rod		

CILINDRI COMPATTI ISO 21287 INOX Ø20-100 ISO 21287 STAINLESS STEEL COMPACT CYLINDERS Ø20-100

DOPPIO EFFETTO MAGNETICO STELO FILETTATO FEMMINA DOUBLE ACTING MAGNETIC FEMALE THREADED PISTON ROD

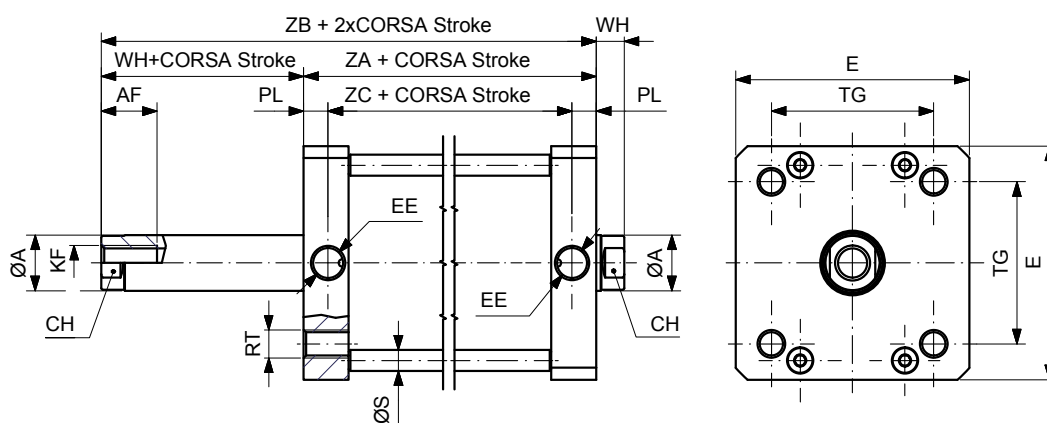
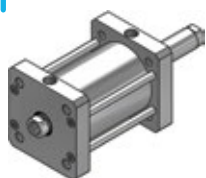
CDEMØ/...KSF



Ømm	ØA	CH	AF	WH	ZA	ZB	ZC	KF	EE	TG	E	RT	PL	ØB	LB	ØS
20	10	9	10	6	37	43	23.5	M6X1	M5X0.8	22	32	M5X0.8	6.75	9	2.1	6
25	10	9	10	6	39	45	25	M6X1	M5X0.8	26	36	M5X0.8	7	9	2.1	6
32	12	10	12	7	44	51	29	M8X1.25	1/8"G	32.5	50	M6X1	7.5	9	2.1	6
40	12	10	12	7	45	52	31	M8X1.25	1/8"G	38	57	M6X1	7	9	2.1	6
50	16	13	16	8	45	53	31	M10X1.5	1/8"G	46.5	67	M8X1.25	7	12	2.6	6
63	16	13	16	8	49	57	34	M10X1.5	1/8"G	56.5	80	M8X1.25	7.5	12	2.6	8
80	20	17	20	10	54	64	38	M12X1.75	1/8"G	72	96	M10X1.5	8	12	2.6	8
100	25	21	20	10	67	77	46	M12X1.75	1/8"G	89	116	M10X1.5	10.5	12	2.6	10

DOPPIO EFFETTO PASSANTE MAGNETICO STELO FILETTATO FEMMINA DOUBLE ACTING THROUGH PISTON ROD MAGNETIC FEMALE THREADED PISTON ROD

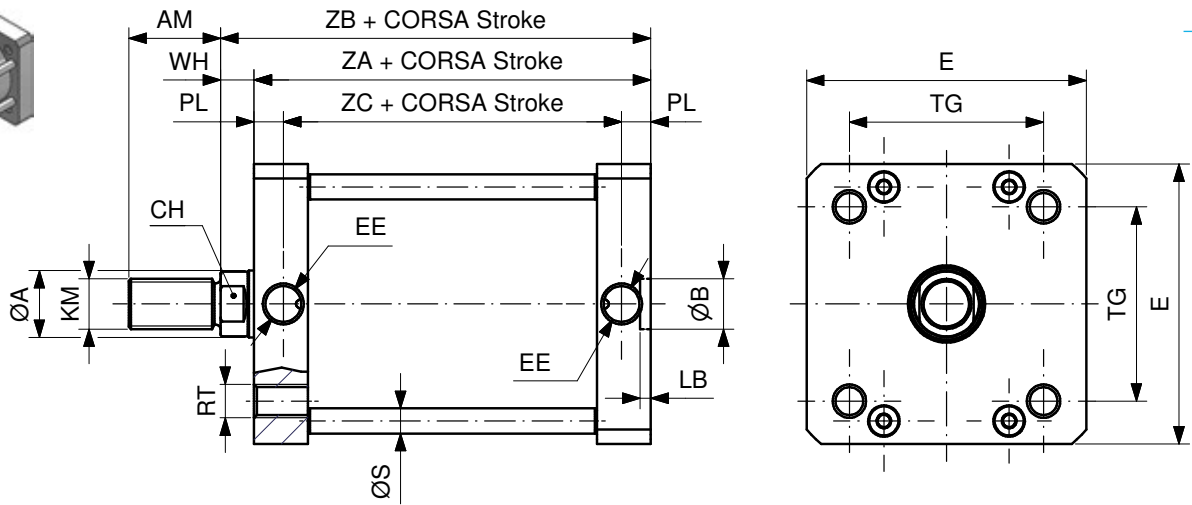
CDEMPØ/...KSF



Ømm	ØA	CH	AF	WH	ZA	ZB	ZC	KF	EE	TG	E	RT	PL	ØS
20	10	9	10	6	37	43	23.5	M6X1	M5X0.8	22	32	M5X0.8	6.75	6
25	10	9	10	6	39	45	25	M6X1	M5X0.8	26	36	M5X0.8	7	6
32	12	10	12	7	44	51	29	M8X1.25	1/8"G	32.5	50	M6X1	7.5	6
40	12	10	12	7	45	52	31	M8X1.25	1/8"G	38	57	M6X1	7	6
50	16	13	16	8	45	53	31	M10X1.5	1/8"G	46.5	67	M8X1.25	7	6
63	16	13	16	8	49	57	34	M10X1.5	1/8"G	56.5	80	M8X1.25	7.5	8
80	20	17	20	10	54	64	38	M12X1.75	1/8"G	72	96	M10X1.5	8	8
100	25	21	20	10	67	77	46	M12X1.75	1/8"G	89	116	M10X1.5	10.5	10

DOPPIO EFFETTO MAGNETICO STELO FILETTATO MASCHIO
DOUBLE ACTING MAGNETIC MALE THREADED PISTON ROD

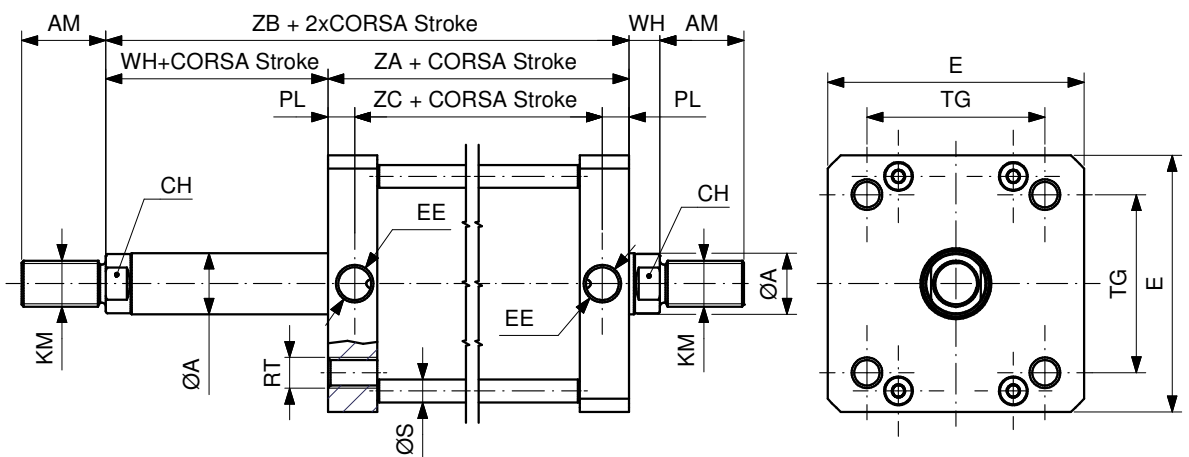
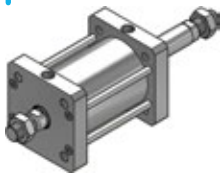
CDEMØ/...KSM



Ømm	ØA	CH	AM	WH	ZA	ZB	ZC	KM	EE	TG	E	RT	PL	ØB	LB	ØS
20	10	9	16	6	37	43	23.5	M8X1.25	M5X0.8	22	32	M5X0.8	6.75	9	2.1	6
25	10	9	16	6	39	45	25	M8X1.25	M5X0.8	26	36	M5X0.8	7	9	2.1	6
32	12	10	19	7	44	51	29	M10X1.25	1/8"G	32.5	50	M6X1	7.5	9	2.1	6
40	12	10	19	7	45	52	31	M10X1.25	1/8"G	38	57	M6X1	7	9	2.1	6
50	16	13	22	8	45	53	31	M12X1.25	1/8"G	46.5	67	M8X1.25	7	12	2.6	6
63	16	13	22	8	49	57	34	M12X1.25	1/8"G	56.5	80	M8X1.25	7.5	12	2.6	8
80	20	17	28	10	54	64	38	M16X1.5	1/8"G	72	96	M10X1.5	8	12	2.6	8
100	25	21	28	10	67	77	46	M16X1.5	1/8"G	89	116	M10X1.5	10.5	12	2.6	10

DOPPIO EFFETTO PASSANTE MAGNETICO STELO FILETTATO MASCHIO
DOUBLE ACTING THROUGH PISTON ROD MAGNETIC MALE THREADED PISTON ROD

CDEMPØ/...KSM

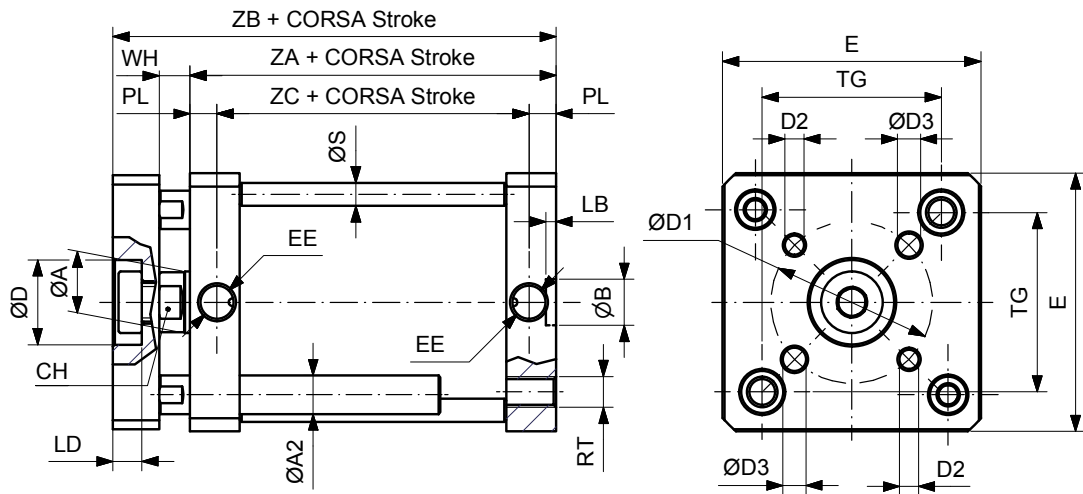
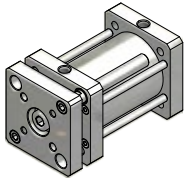


Ømm	ØA	CH	AM	WH	ZA	ZB	ZC	KM	EE	TG	E	RT	PL	ØB	LB	ØS
20	10	9	16	6	37	43	23.5	M8X1.25	M5X0.8	22	32	M5X0.8	6.75	9	2.1	6
25	10	9	16	6	39	45	25	M8X1.25	M5X0.8	26	36	M5X0.8	7	9	2.1	6
32	12	10	19	7	44	51	29	M10X1.25	1/8"G	32.5	50	M6X1	7.5	9	2.1	6
40	12	10	19	7	45	52	31	M10X1.25	1/8"G	38	57	M6X1	7	9	2.1	6
50	16	13	22	8	45	53	31	M12X1.25	1/8"G	46.5	67	M8X1.25	7	12	2.6	6
63	16	13	22	8	49	57	34	M12X1.25	1/8"G	56.5	80	M8X1.25	7.5	12	2.6	8
80	20	17	28	10	54	64	38	M16X1.5	1/8"G	72	96	M10X1.5	8	12	2.6	8
100	25	21	28	10	67	77	46	M16X1.5	1/8"G	89	116	M10X1.5	10.5	12	2.6	10

CILINDRI COMPATTI ISO 21287 INOX Ø20-100 ISO 21287 STAINLESS STEEL COMPACT CYLINDERS Ø20-100

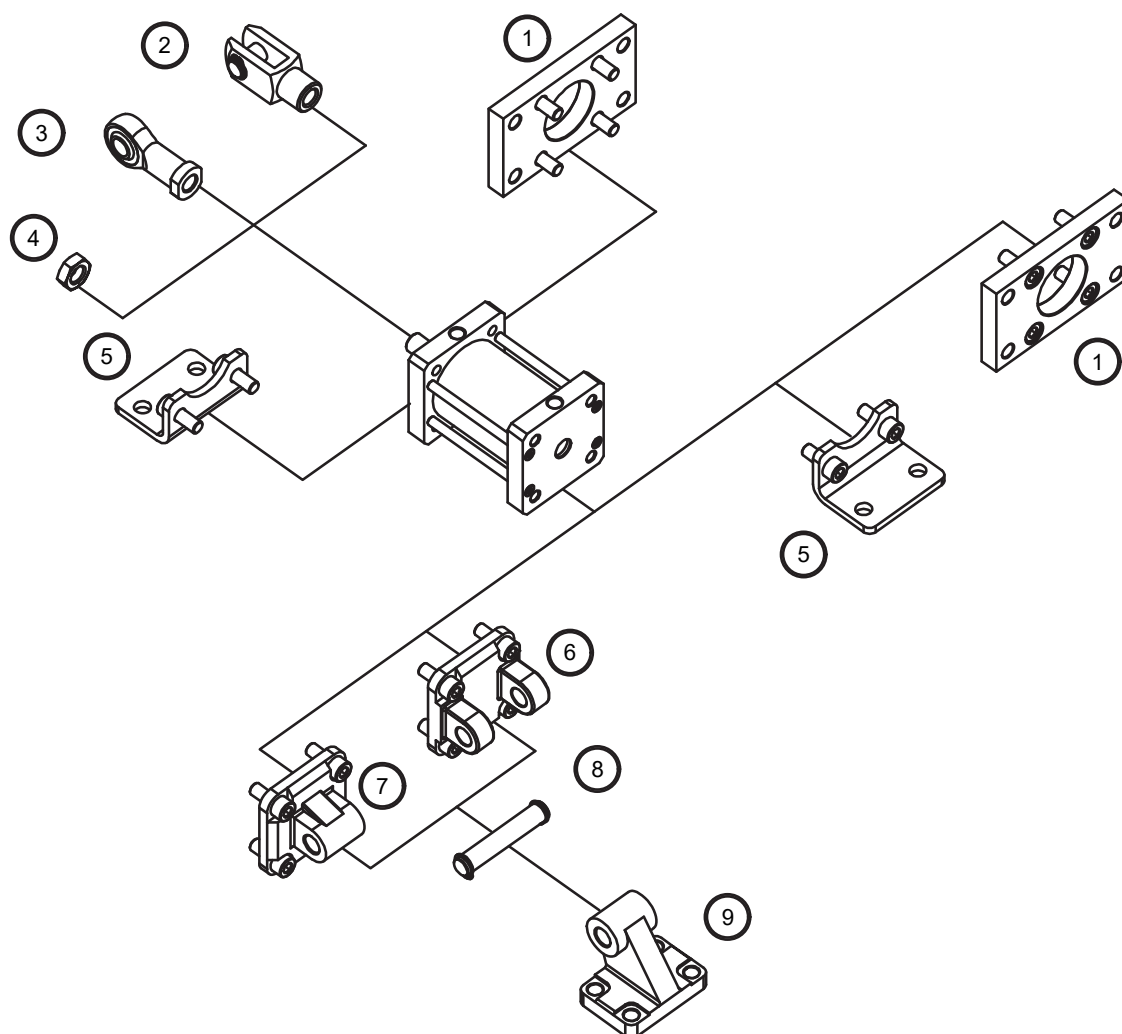
DOPPIO EFFETTO MAGNETICO ANTIROTAZIONE
NON-ROTATING DOUBE ACTING MAGNETIC

CDEMØ/...KSR



Ømm	ØA	CH	WH	ZA	ZB	ZC	EE	TG	E	RT	PL	ØB	LB	ØS	ØD	LD	ØA2	ØD1	D2	ØD3
20	10	9	6	37	51	23.5	M5X0.8	22	32	M5X0.8	6.75	9	2.1	6	11	5	5	17	M4X0.7	4
25	10	9	6	39	53	25	M5X0.8	26	36	M5X0.8	7	9	2.1	6	14	5	6	22	M4X0.7	4
32	12	10	7	44	61	29	1/8"G	32.5	50	M6X1	7.5	9	2.1	6	17	6.5	6	28	M5X0.8	5
40	12	10	7	45	62	31	1/8"G	38	57	M6X1	7	9	2.1	6	17	6.5	8	33	M5X0.8	5
50	16	13	8	45	65	31	1/8"G	46.5	67	M8X1.25	7	12	2.6	6	22	7.5	10	42	M6X1	6
63	16	13	8	49	69	34	1/8"G	56.5	80	M8X1.25	7.5	12	2.6	8	22	7.5	10	50	M6X1	6
80	20	17	10	54	78	38	1/8"G	72	96	M10X1.5	8	12	2.6	8	28	10.5	12	65	M8X1.25	8
100	25	21	10	67	91	46	1/8"G	89	116	M10X1.5	10.5	12	2.6	10	30	10.5	12	80	M10X1.5	10

ACCESSORI DI FISSAGGIO MOUNTING ACCESSORIES



	Descrizione Description	Acciaio inox Stainless steel
1	Flangia / Flange (MF1-MF2)	152
2	Forcella / Clevis	147
3	Testa a snodo / Rod end	148
4	Dado per aste / Piston rod nut	146
5	Piedino basso / Low-rise pedestal (MS1)	152
6	Cerniera femmina / Female hinge (MP2)	150
7	Cerniera maschio / Male hinge (MP4)	151
8	Perno per cerniera femmina / Pivot for female hinge (AA4)	150
9	Articolazione a squadra / Square joint	151